

# **Gold-Silver-Copper-Zinc Exploration in Mexico and British Columbia, Canada**

## **Corporate Presentation**

**January 2009**

### ***“Forward-looking Statements”***

***This presentation contains certain statements that may be deemed “forward-looking statements”. All statements in this presentation, other than statements of historical fact, that address events or developments that the Company expects to occur, are forward-looking statements. Although the Company believes the expectations expressed in such forward-looking statements are based on reasonable assumptions, Investors are cautioned that such statements are not guarantees of future performance. Forward-looking statements are based on the beliefs, estimates and opinions of the Company’s management on the date the statements are made.***

## ***Corporate overview and objectives:***

- ***Exploration company focused on enhancing mineral asset and shareholder value***
- ***Exploring for gold, silver, copper and zinc***
- ***Operating in Mexico and B.C., stable mineral-rich environments with excellent infrastructure***
- ***Multiple projects and targets, multiple chances for discovery and success***
- ***Upside potential for share value based on discovery***
- ***Strong capital structure and low dilution to ensure maximum leverage on share value from value created on projects***

## *Key Factors for Growth in Canasil Share Value:*

- *Active exploration programs*
- *Leverage to discovery of mineral resources*
- *Strong operating team to implement programs*
- *Joint Ventures to advance projects*
- *Low dilution, significant upside potential in share value*
- *Location of main exploration projects, close to major producing mines in politically stable jurisdictions*
- *Leverage to increasing precious and base metal prices*

**Management team:**

**Alvin Jackson** (Red Dragon Res. Eurozinc Mining, Amoco/Cyprus)

**Michael McInnis** (Gateway Gold, Riverstone Res., Abacus Minerals)

**Gary Nordin** (Nevada Pacific Gold, Eldorado Gold, Bema Gold)

**Arthur Freeze** (Orko Silver, Goldcorp)

**Bahman Yamini**, Pres. & CEO,

**Kerry Spong**, CFO & VP Finance

**Graham Scott**, Corp. Sec. & Legal Counsel (Vector Corp. Fin. Lawyers)

**Erme Enriquez**, Director Exploration & Development, Mexico

**Advisors:**

**Andre Panteleyev, PH.D.** (Consulting geologist)

**Iain MacPhail**, (CFO Far West Mining)

- **Well recognized industry professionals**
- **Extensive exploration experience**
- **Successful track record of discoveries**
- **Experience in taking projects through to production**

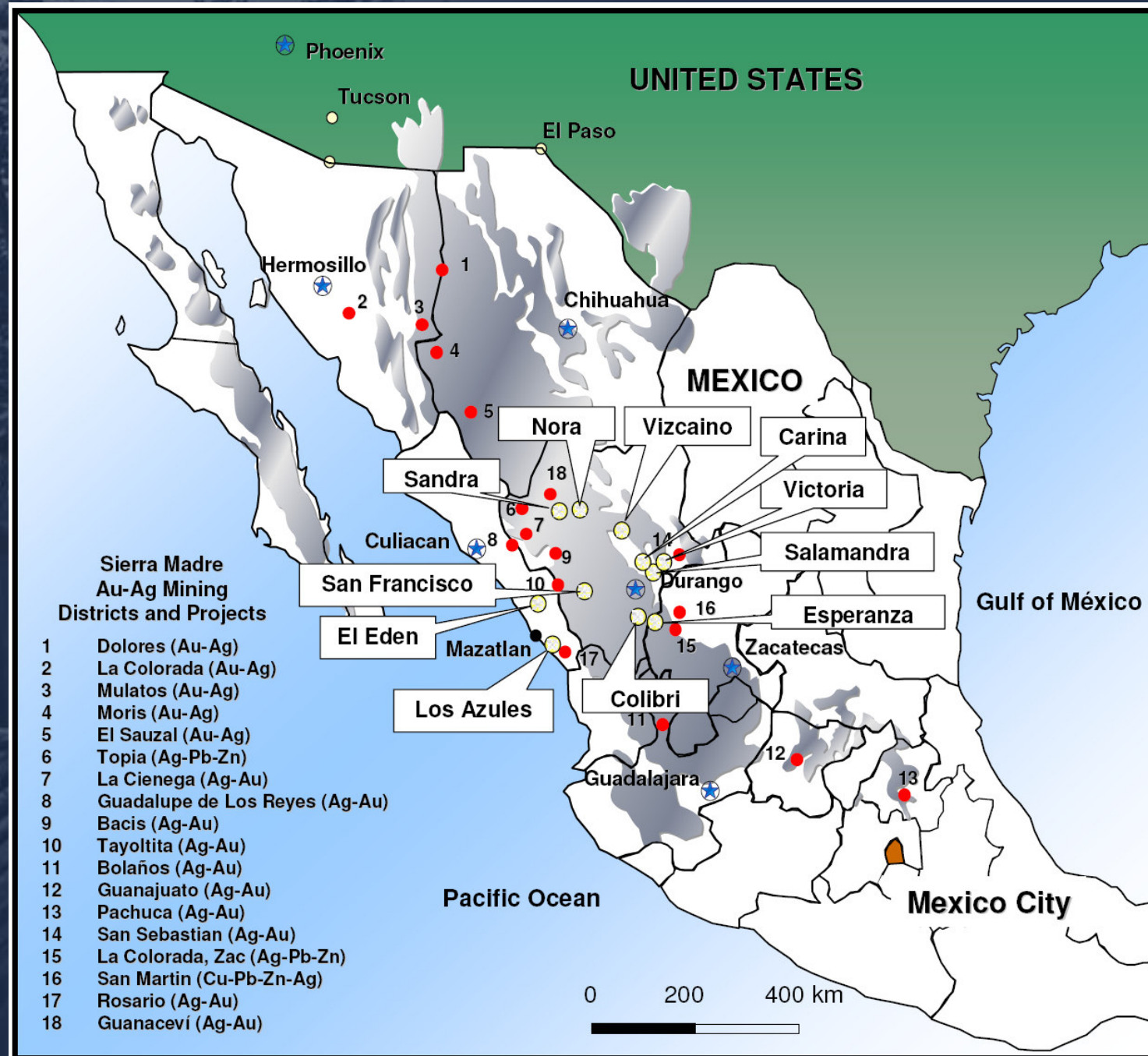
**11 Exploration  
Projects in  
Mexico:**

**75,000 hectares  
Combined land  
position**

**Located on known  
mineralized trends  
close to Durango**

**Prospective for  
Gold, Silver,  
Copper & Zinc**

**High discovery  
potential**



**Mexico Operations and exploration projects:**

- Operating subsidiary with experienced local operations team in Durango
- Full time geological and support staff, active exploration and project acquisition program



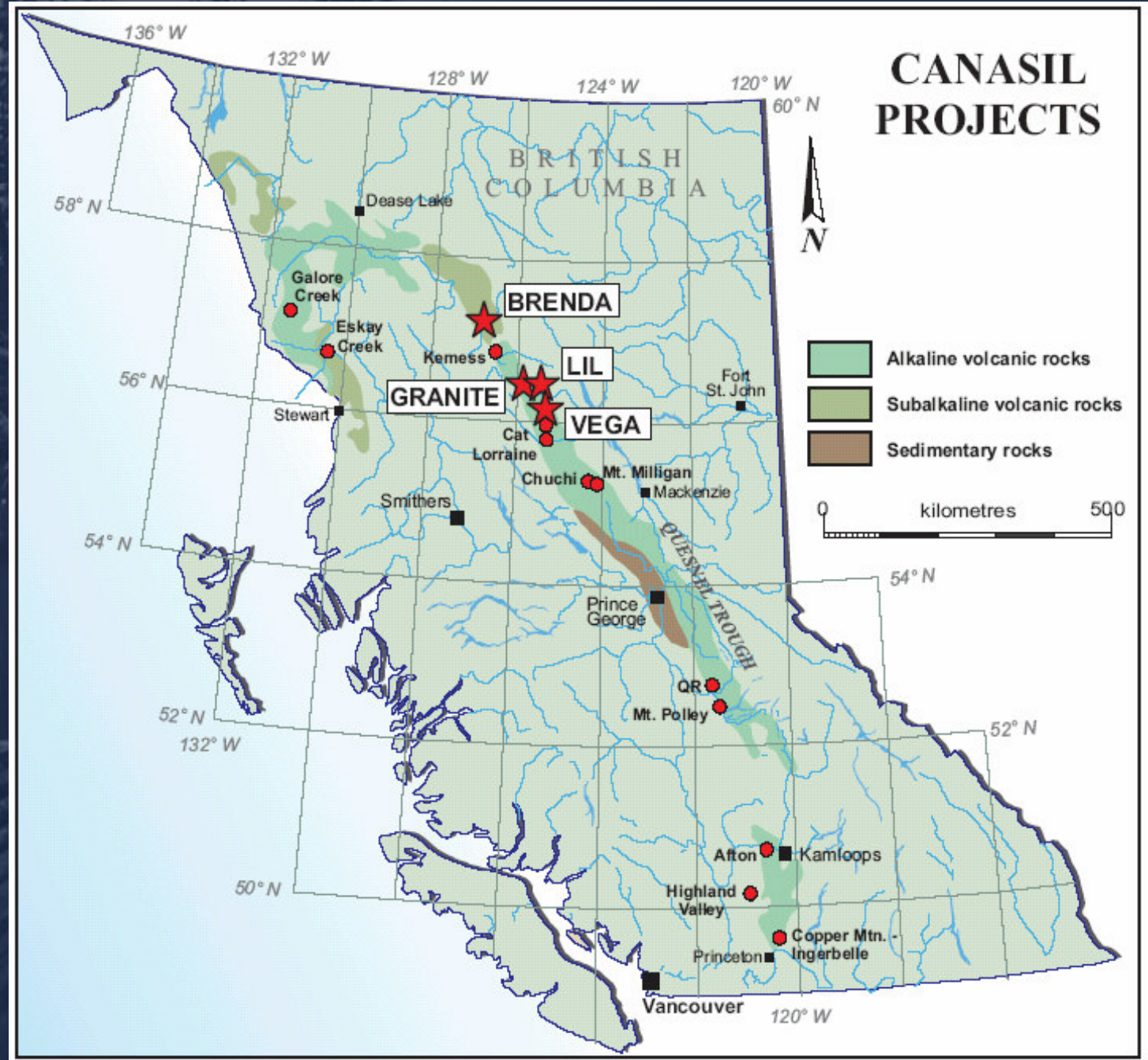
- Focused & cost-effective acquisition program; most projects 100% owned
- Projects located close to current or past producing mines
- Excellent road access & infrastructure
- Efficient implementation of exploration programs

**4 Exploration projects in B.C., Canada:**

**Over 12,000 hectares located on one of the largest mineralized belts In Canada**

**Located near major producing mines and deposits**

**Potential for discovery of a multi-million ounce gold-copper deposit**



## Share and Capital Structure

*Low dilution: High potential upside value*

Shares issued:	34,952,592
Warrants (\$0.35 - \$0.55: Mar. - Aug. 09):	2,400,000
Options (\$0.20 - \$0.75: 2009 - 2012):	2,283,750
	-----
Fully diluted:	39,636,342
	-----
Controlled by insiders & associates	Over 12,000,000
Capital raised to date:	\$11,709,837
Average price per issued share:	\$ 0.33

*(December 31, 2008)*

## **Gold-Silver Exploration Focus 2009:**

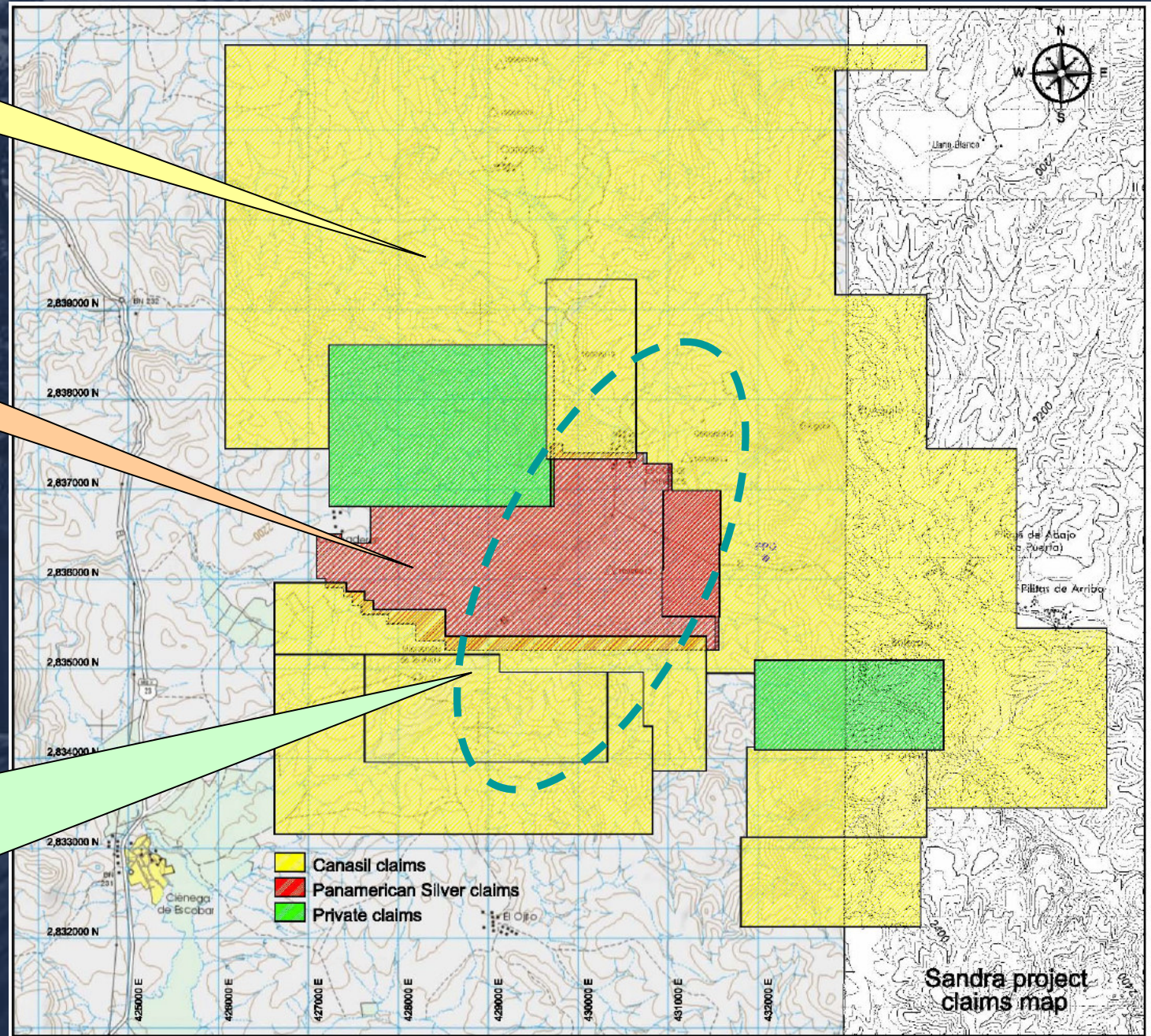
- 1. Sandra & Escobar projects, Durango, Mexico**  
**Large Gold-Silver system with high grade epithermal veins**  
**Option and JV agreement with Pan American Silver**
- 2. Salamandra & Victoria, Durango, Mexico**  
**Large Silver-Zinc system & Regional Exploration targets**  
**Option and JV agreement with Blackcomb Minerals**
- 3. La Esperanza, Zacatecas, Mexico**  
**High grade Silver-Zinc-Lead epithermal vein**
- 4. New Projects Mexico – Vizcaino & Carina**  
**Developing Gold & Silver targets**

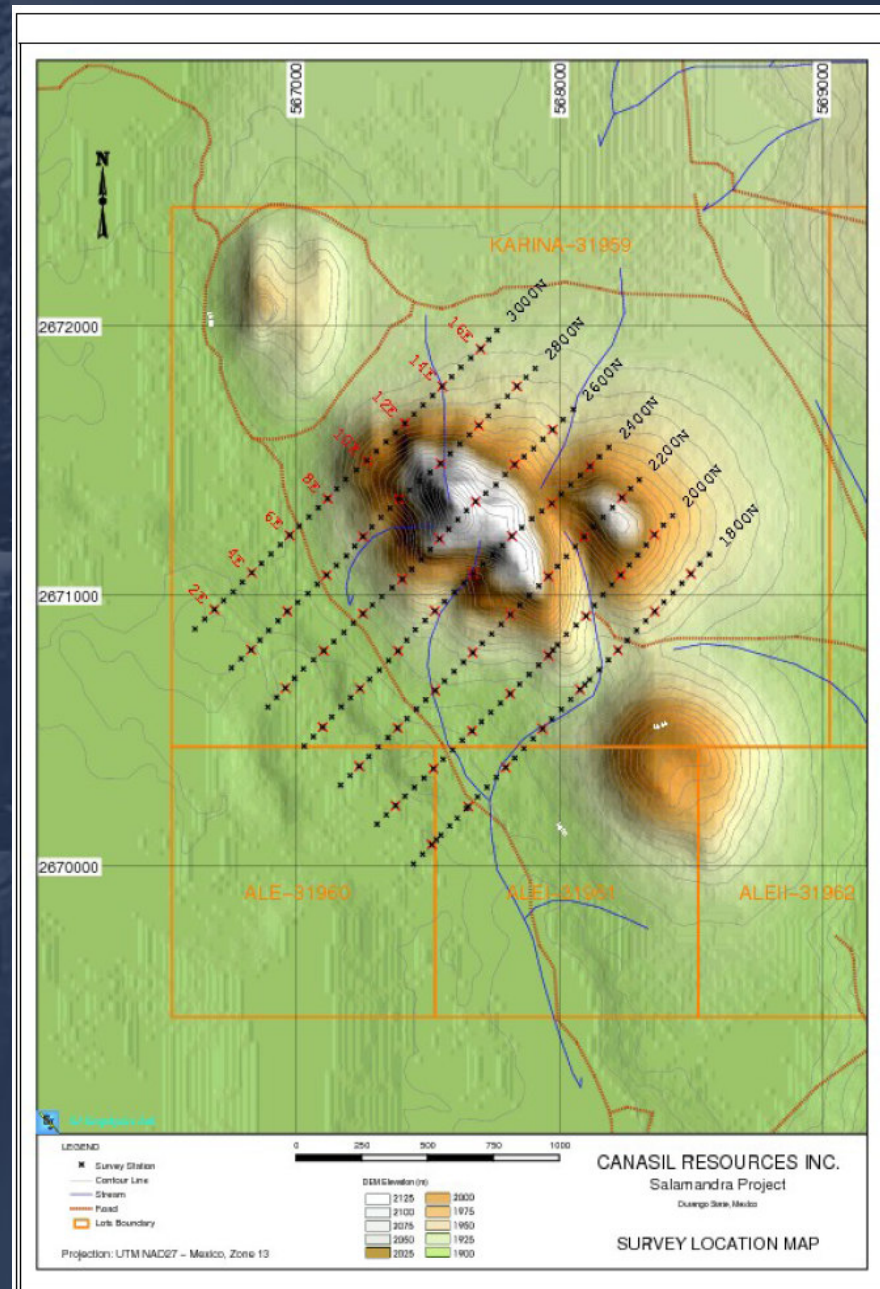
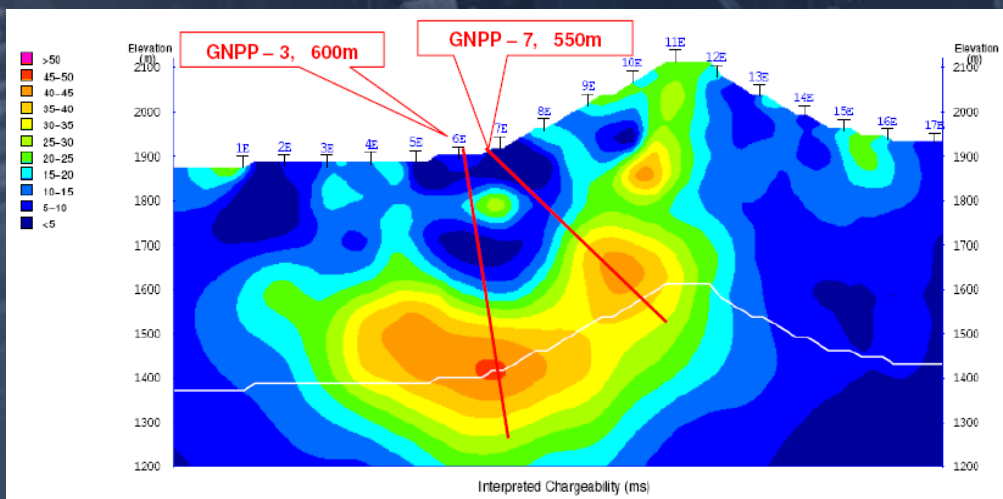
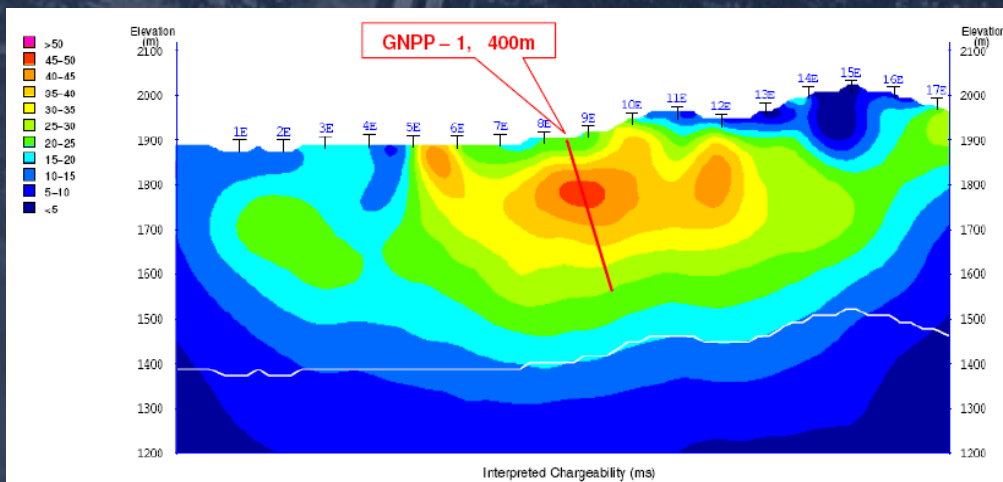
*Canasil Sandra  
Claims 5,500 ha*

*Pan American  
Silver Escobar  
Claims 600 ha*

*Canasil option to earn  
51% in Escobar Claims  
Pan American option to  
back-in to 51% in  
combined claims and  
advance project to  
feasibility & production*

*Large Gold-Silver  
mineralized system  
with high grade  
veins – samples up  
to 10 g/t gold and  
1,488 g/t silver*





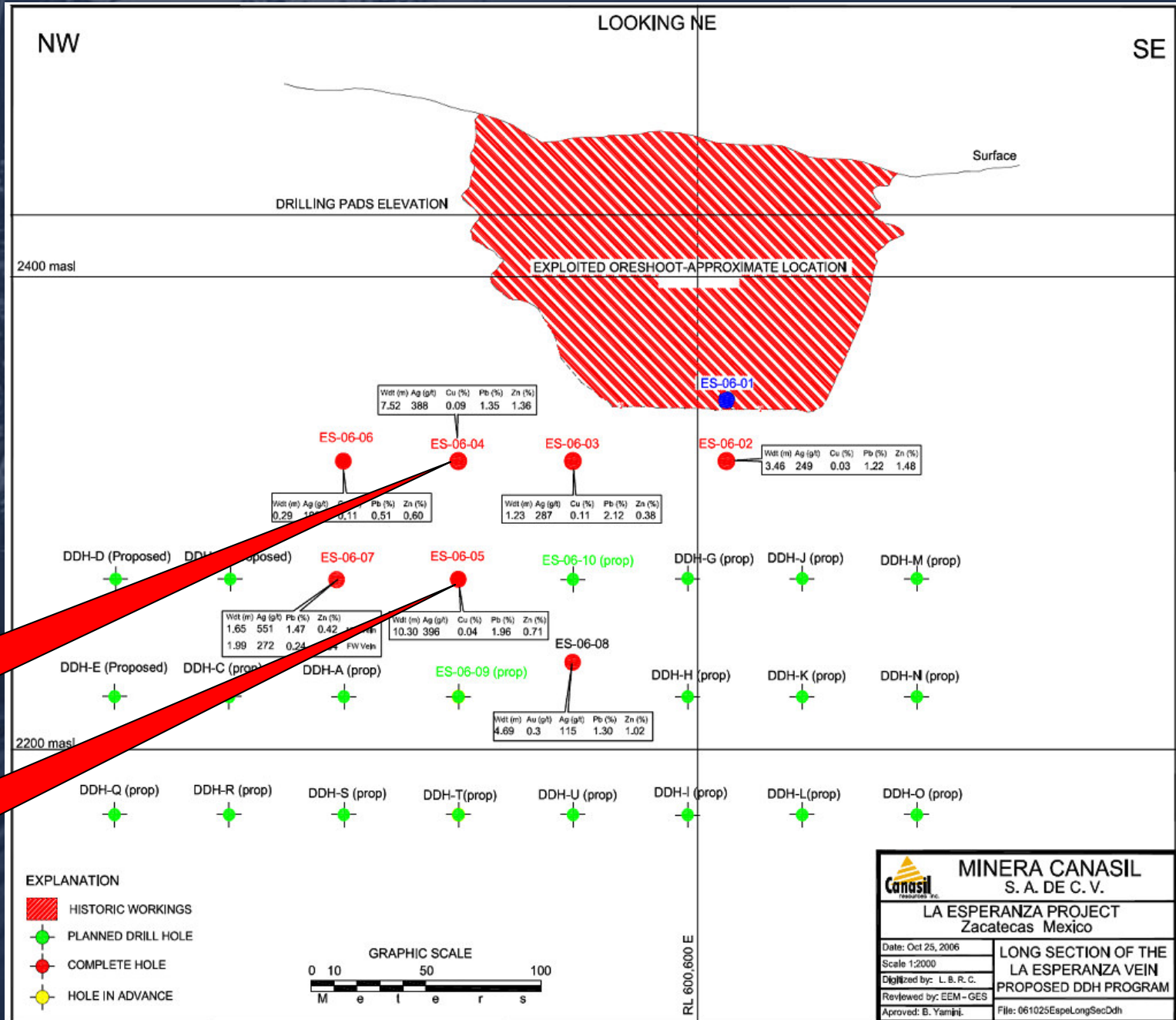
<b>Drill Hole</b>	<b>Intercept From – To m</b>	<b>Width m</b>	<b>Silver g/t</b>	<b>Zinc %</b>	<b>Copper %</b>	<b>Lead %</b>
SA-07-02	7.40 – 17.25	9.85	102	0.55	0.02	0.03
SA-07-02	27.65 – 35.10	7.45	50	12.00	0.22	0.06
SA-07-03	195.00 – 205.00	10.00	71	3.48	0.06	1.26
SA-07-04	196.00 – 204.00	8.00	26	1.39	0.08	0.35
SA-07-05	262.00 – 267.66	5.66	19	2.75	0.00	0.03
SA-07-06	3.40 – 15.00	11.60	13	4.05	0.20	0.03
SA-07-08	261.00 – 271.00	10.00	29	3.51	0.04	0.42
SA-07-09	355.10 – 363.30	8.20	4	2.09	0.05	0.01
SA-07-10	230.00 – 234.35	4.35	5	5.51	0.02	0.05
SA-07-11	58.40 – 62.20	3.80	40	1.30	0.12	1.16
SA-07-12	228.50 – 230.90	2.40	10	2.87	0.01	0.09

**11 out of 12 drill holes intersected significant zinc-silver mineralized zones**

**La Esperanza  
Ag-Zn-Pb Project  
Long section**

**Strong silver-zinc-  
Lead Vein system,  
With wide widths and  
High Silver grades**

**Open along strike  
and at depth**

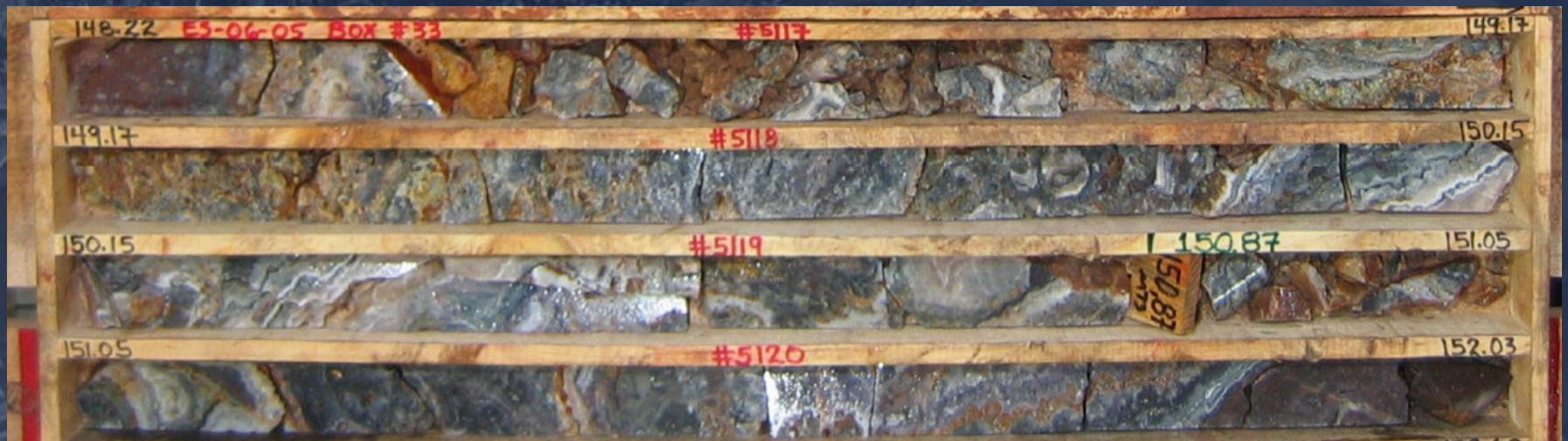


**ES-06-04 (-100 m)  
7.52 m true width  
Av. 388g/t Ag  
634g/t Ag over 2.66 m**

**ES-06-05 (-150 m)  
9.8 m true width  
Av. 396 g/t Ag  
1,360g/t Ag over 1.93 m**

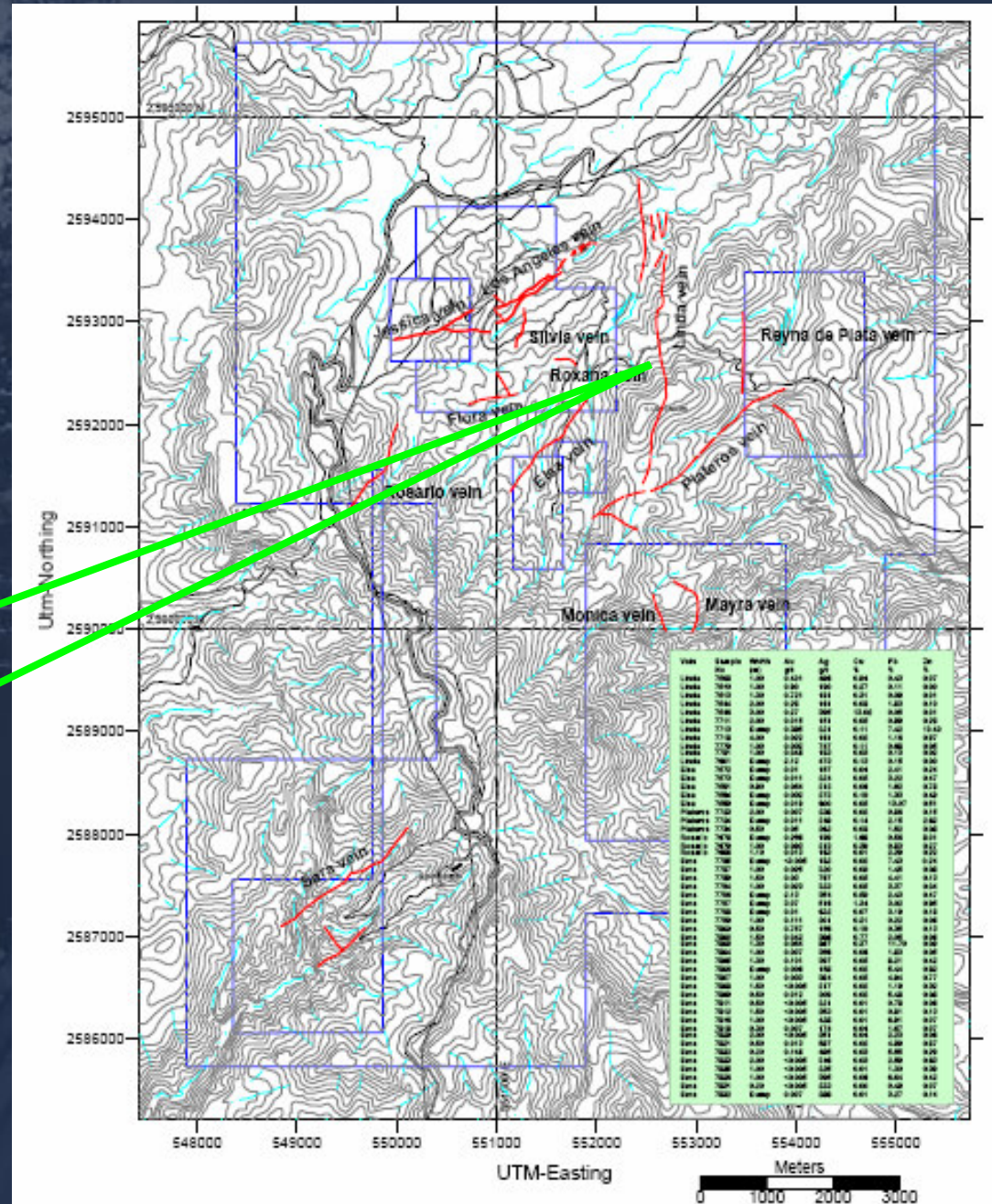
## La Esperanza drill hole ES-06-05 – Sept. 2006 – high-grade intercepts

Sample No.	Width m	Silver g/t	Zinc %	Lead %
5117: 148.22 – 149.17m	0.95	2,144	0.29	3.20
5118: 149.17 – 150.15m	0.98	600	0.46	3.60
5125: 155.22 – 155.93m	0.71	837	1.66	20.71



5,600 hectares hosting multiple vein system with over 14 km combined strike length

- Linda vein over 4 km strike length
- Drill intercept 3.7 metres with 98 g/t Ag, 3.49% Cu & 1.96% Zn
- Surface samples up to 13.02% Cu and 396 g/t Ag



**Linda Vein drill hole CO-07-09**

<b>Intercept</b>	<b>Width m</b>	<b>Silver g/t</b>	<b>Copper %</b>	<b>Zinc %</b>
<b>74.65 – 78.35 m</b>	<b>3.70</b>	<b>98</b>	<b>3.49</b>	<b>1.96</b>
<b>Incl: 77.35 – 78.35 m</b>	<b>1.00</b>	<b>177</b>	<b>7.46</b>	<b>0.30</b>

**Linda Vein drill hole CO-07-12**

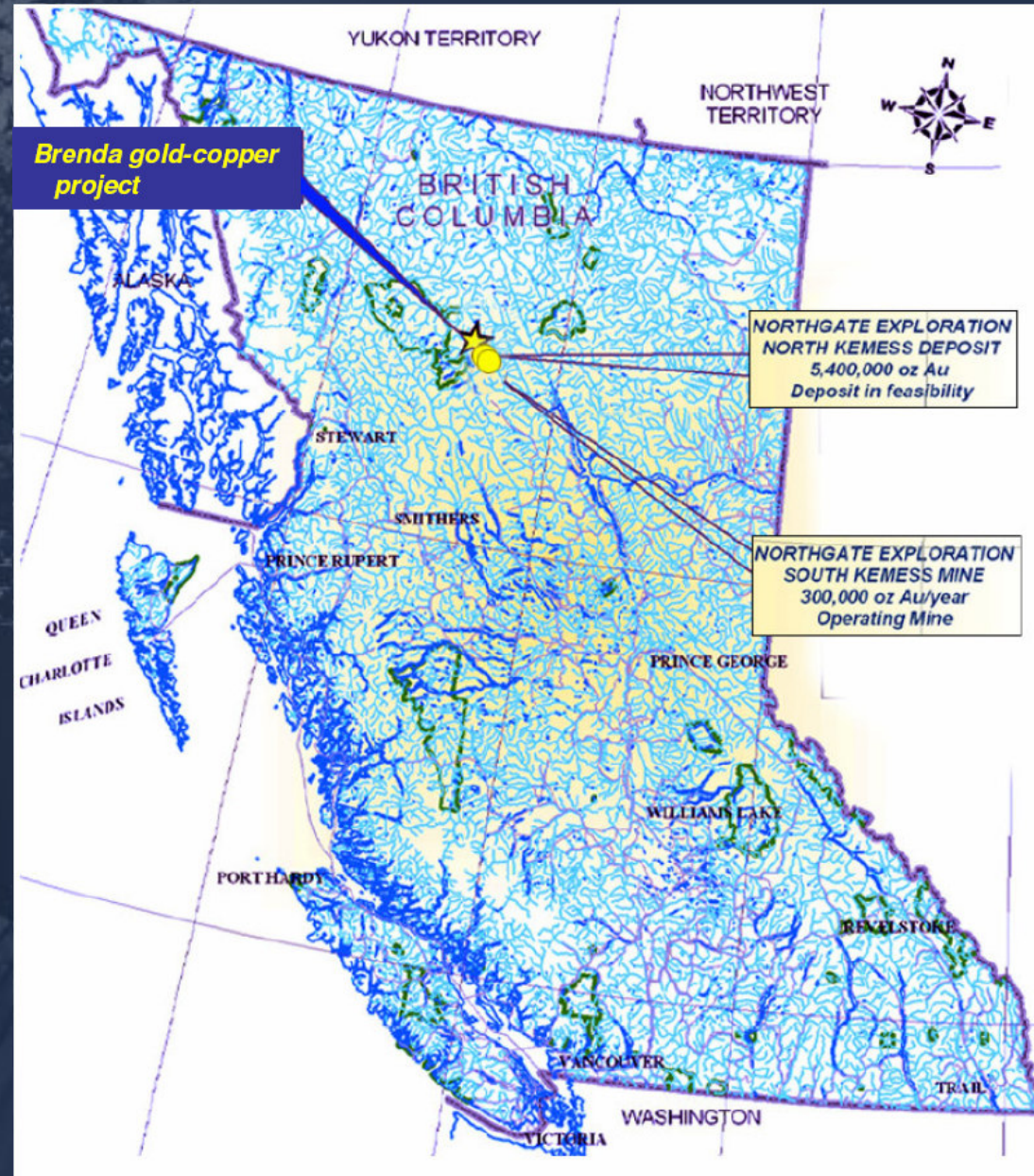
<b>158.60 – 159.20 m</b>	<b>0.60</b>	<b>87</b>	<b>1.10</b>	<b>0.98</b>
<b>167.00 – 170.30 m</b>	<b>3.30</b>	<b>63</b>	<b>2.48</b>	<b>0.12</b>
<b>Incl: 168.30 – 169.30</b>	<b>1.00</b>	<b>173</b>	<b>6.82</b>	<b>0.16</b>

**Linda Vein drill hole CO-07-13**

<b>37.50 – 37.75 m</b>	<b>0.25</b>	<b>568</b>	<b>23.10</b>	<b>0.29</b>
<b>144.84 – 158.00 m</b>	<b>13.16</b>	<b>33</b>	<b>1.17</b>	<b>0.10</b>
<b>Incl: 144.84 – 148.02 m</b>	<b>3.18</b>	<b>58</b>	<b>1.76</b>	<b>0.25</b>
<b>And: 150.08 – 156.00 m</b>	<b>5.92</b>	<b>37</b>	<b>1.43</b>	<b>0.05</b>

## **BRENDA Gold/Copper Project B.C., Canada**

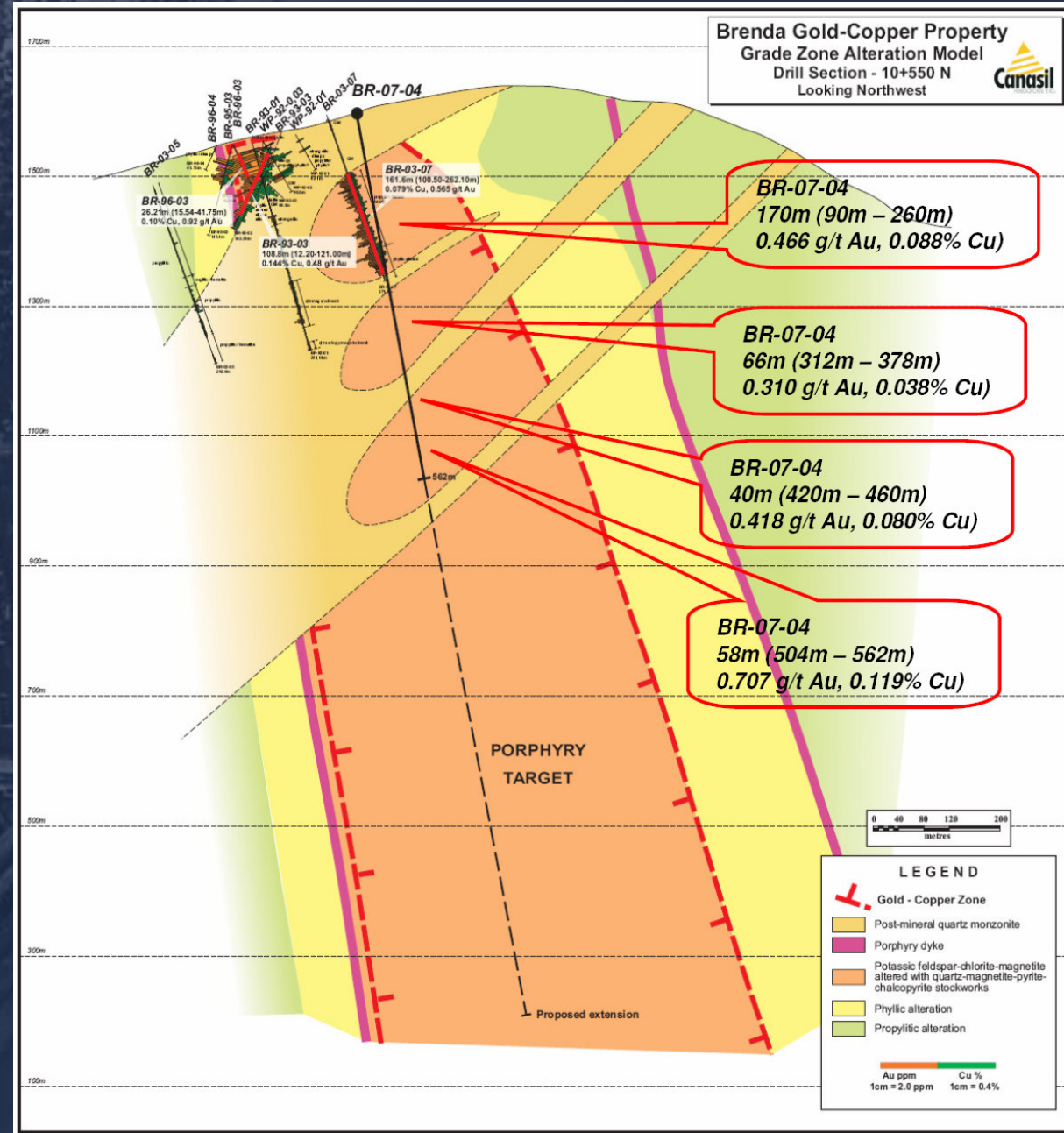
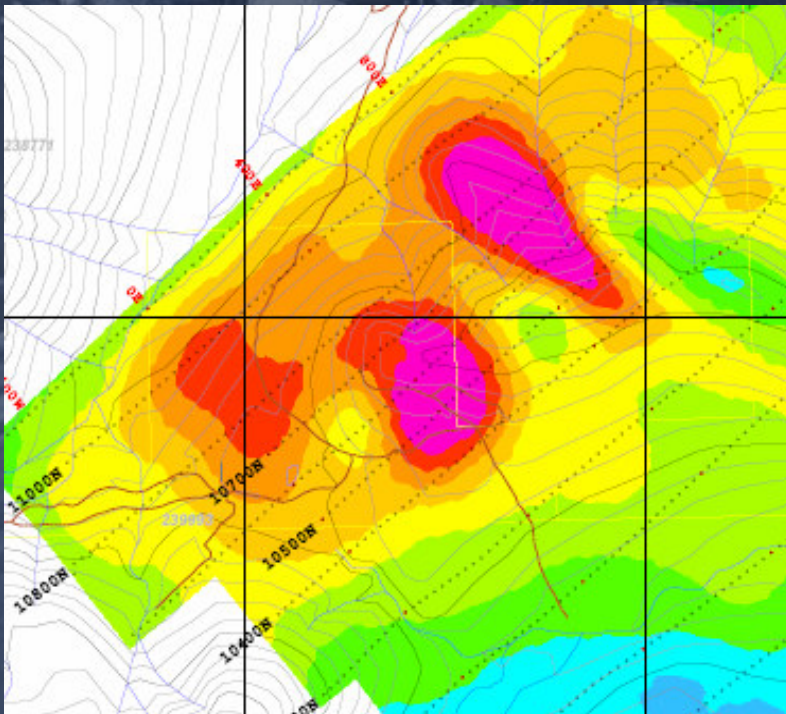
- **25km NW of Northgate Minerals Kemess South mine (+2 mill. oz Gold, 300k oz Au/year)**
- **Excellent access and infrastructure**
- **Past drilling confirmed ore grade porphyry gold-copper mineralization**
- **2007 drilling and geophysics indicates potential for deep porphyry gold-copper system**
- **Potential for a multi-million ounce gold-copper deposit**



## Brenda Au-Cu Project

2007 Diamond drill program:  
Increasing gold and copper  
grades with depth

3D-IP Geophysics  
Chargeability at -300 metres



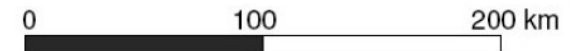
**New Projects  
Durango, Mexico:**

**1. Vizcaino, Durango  
600 hectares  
Gold-Silver**

**2. Carina, Durango  
3,100 hectare  
Silver-Zinc-Lead**

**8 Prospects on Major  
Durango-Zacatecas  
Gold - Silver Trend**

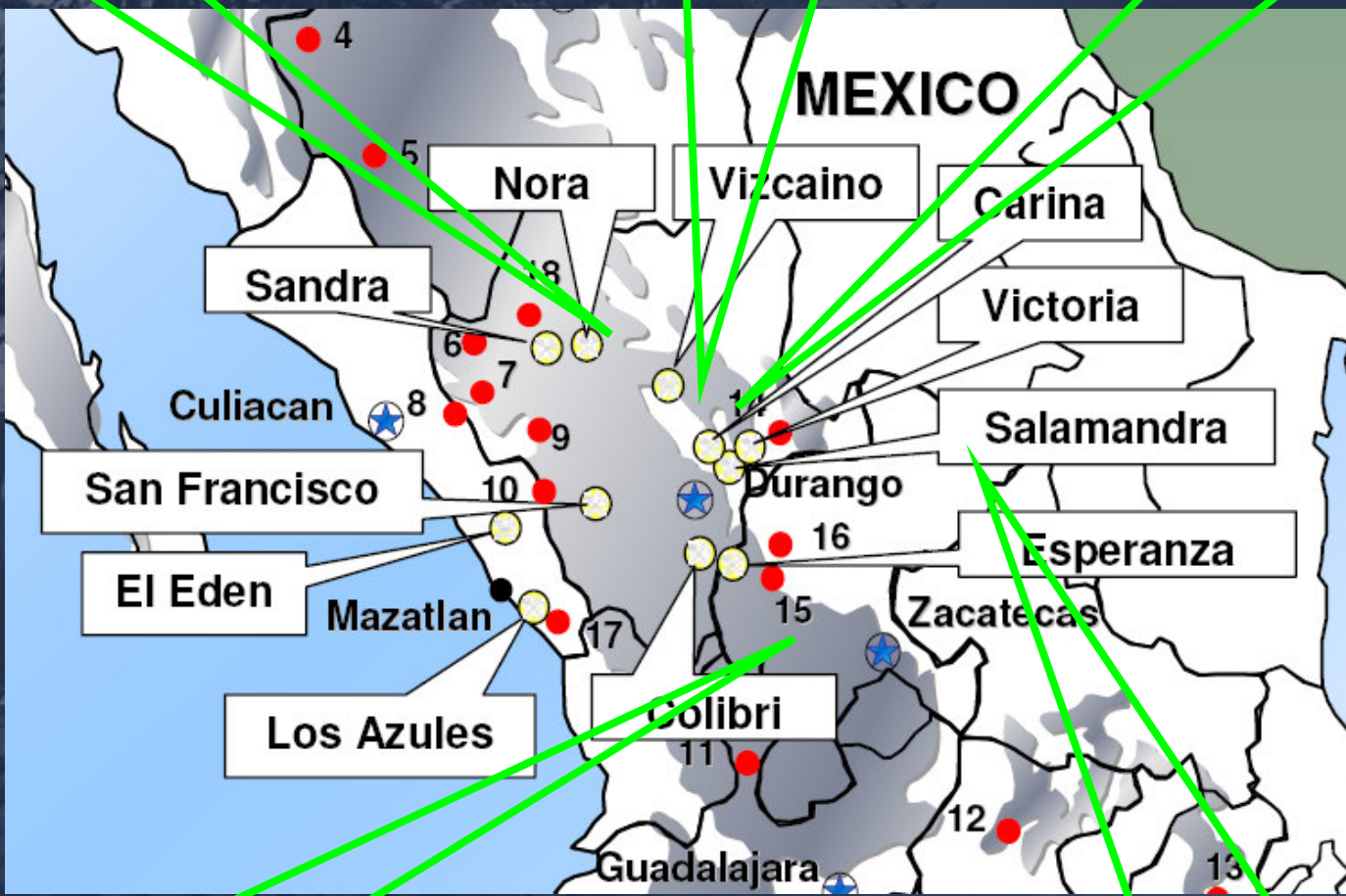
**Durango-Zacatecas-Sinaloa  
Historic & Producing Mines**  
**New Discoveries**  
**Canasil Projects**  
**New Canasi Projects**



**Silver Standard  
La Pitarilla**

**Geologix Explorations  
San Augustin**

**Orko Silver  
La Preciosa**



**MAG Silver  
Juanicipio / Fresnillo**

**CanPlats  
Camino Rojo**

***Well Positioned to Create  
Mineral Asset and Share Value:***

- 1. Experienced professional management and operating team.***
- 2. Multiple high quality exploration projects in mineral rich districts and stable jurisdictions.***
- 3. Implementing active exploration programs to discover and define mineral resources.***
- 4. Joint ventures to advance major projects.***
- 5. Strong capital structure and low dilution allowing greater upside potential in share value.***