

Corporate Presentation

Silver-Zinc and Gold-Copper Exploration in Mexico and British Columbia, Canada

April 2007

“Forward-looking Statements”

This presentation contains certain statements that may be deemed “forward-looking statements”. All statements in this presentation, other than statements of historical fact, that address events or developments that the Company expects to occur, are forward-looking statements. Although the Company believes the expectations expressed in such forward-looking statements are based on reasonable assumptions, Investors are cautioned that such statements are not guarantees of future performance. Forward-looking statements are based on the beliefs, estimates and opinions of the Company’s management on the date the statements are made.

Corporate overview and objectives:

- *Active Canadian mineral exploration company focused on enhancing mineral asset and shareholder value*
- *Strong portfolio of highly prospective precious and base metal properties in Mexico and B.C., Canada*
- *Directors, advisors and management have extensive experience in the mineral exploration and mining industry*
- *Management track record of identifying and advancing many key mineral exploration projects*
- *Multiple projects and targets, multiple chances for discovery and success*

Great Projects + Experienced Management = Great Results

Key Factors for Growth in Canasil Share Value:

- ***Twelve exploration projects in Mexico and Canada***
- ***Discovery potential for Gold, Silver, Copper, Zinc***
- ***Potential for taking projects through to production and/or joint ventures to advance projects***
- ***Experienced professional management team with proven record of success***
- ***Low dilution and strong capital structure allowing significant upside potential in share value***
- ***Location of main exploration projects, close to major producing mines in politically stable jurisdictions***
- ***Current historically high precious and base metal prices***

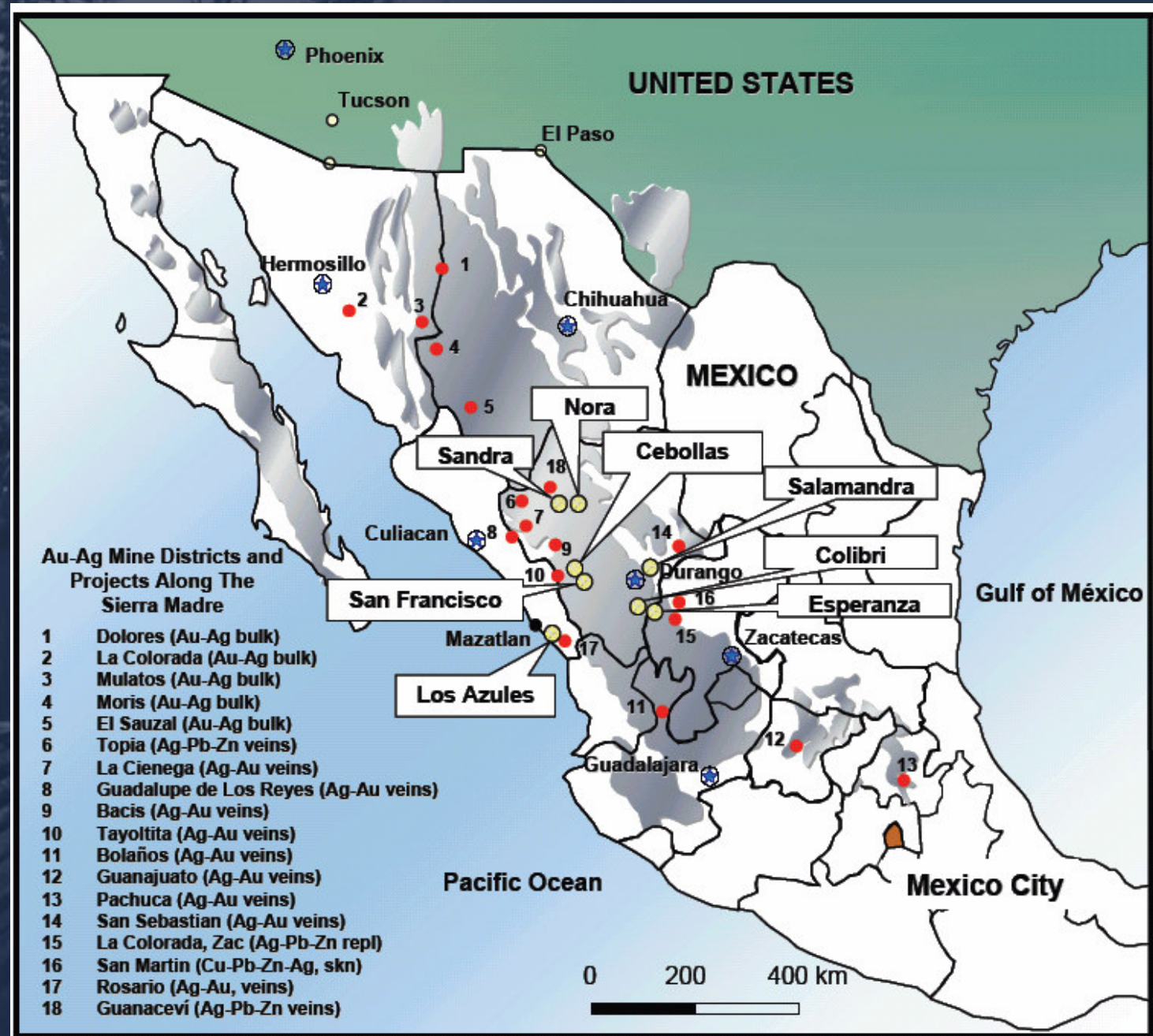
8 Exploration Projects in Mexico:

**Over 123,000 hectares
Combined land position**

Located in known mineralized trends close to Durango

Prospective for Gold, Silver, Copper & Zinc

High discovery potential

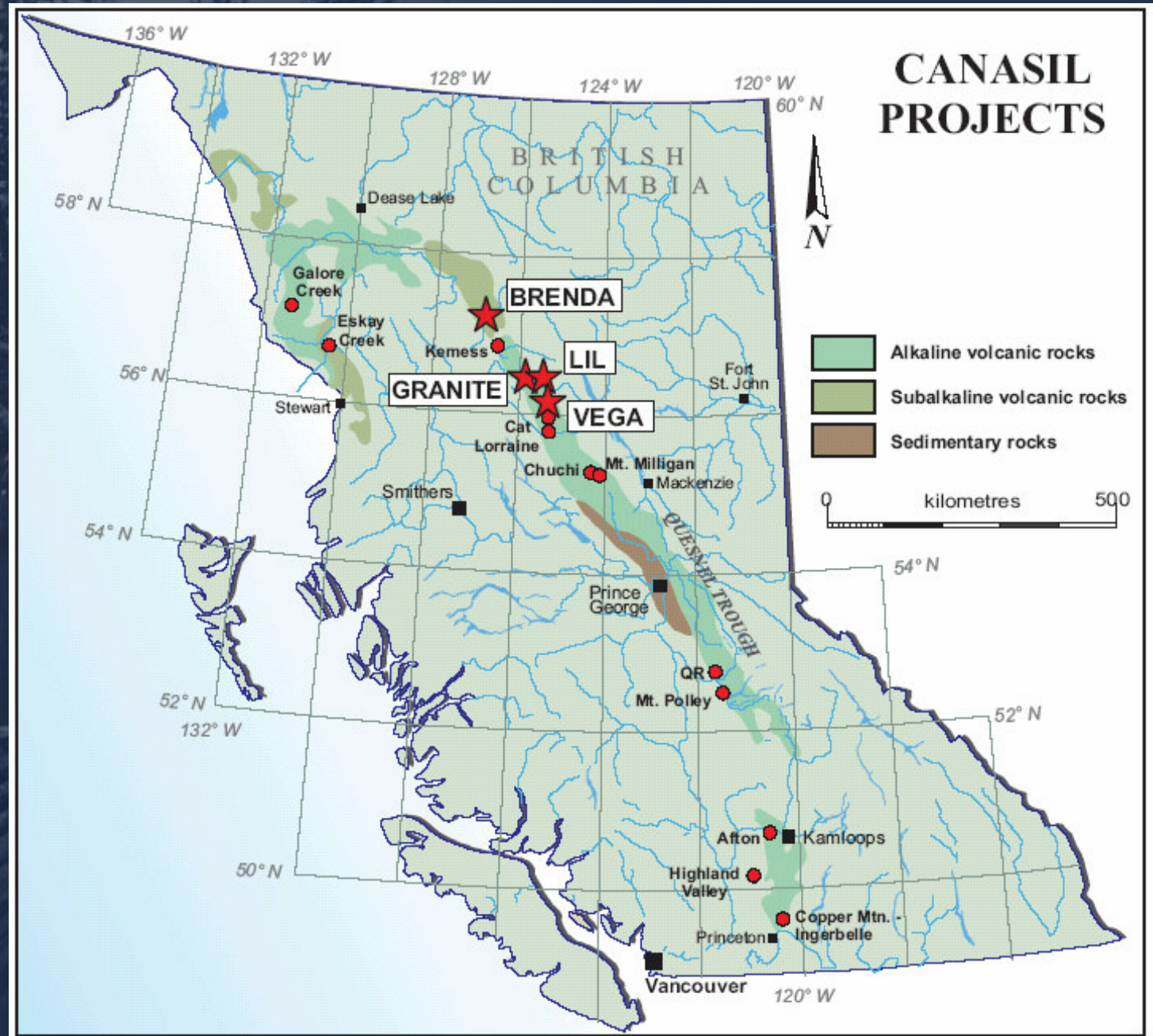


4 Exploration projects in B.C., Canada:

Over 12,000 hectares located on one of the largest mineralized belts In Canada

Located near major producing mines and deposits

Potential for discovery of a multi-million ounce gold-copper deposit



Management team:

Alvin Jackson (Eurozinc Mining, Amoco/Cyprus)

Michael McInnis (Gateway Gold, Intl. Curator, Champion Res.)

Gary Nordin (Nevada Pacific Gold, Eldorado Gold, Bema Gold)

Arthur Freeze (Principal geological consultant – Goldcorp)

Bahman Yamini, Pres. & CEO, (Director Canasil since 1993)

Kerry Spong, CFO & VP Finance (Director Primary Metals)

Graham Scott, Corp. Sec. & Legal Counsel (Vector Corp. Fin. Lawyers)

Erme Enriquez, Director Exploration & Development, Mexico

Advisors:

Peter Steen (International Corona, Homestake)

Richard Gilbert (Resource bank & Trust, Stillwater Mining)

Andre Panteleyev, PH.D. (Consulting geologist)

Iain MacPhail, (Dir. Oremex Res., CFO Far West Mining)

- **Well recognized industry professionals**
- **Extensive exploration experience**
- **Successful track record of discoveries**
- **Experience in taking projects through to production**

Share and Capital Structure

Low dilution: High potential upside value

Shares issued:	28,674,342
Warrants (\$0.35-\$0.55 – 06.07-03.08):	6,064,000
Options (\$0.10-\$0.50 – 2007-2012):	2,700,000

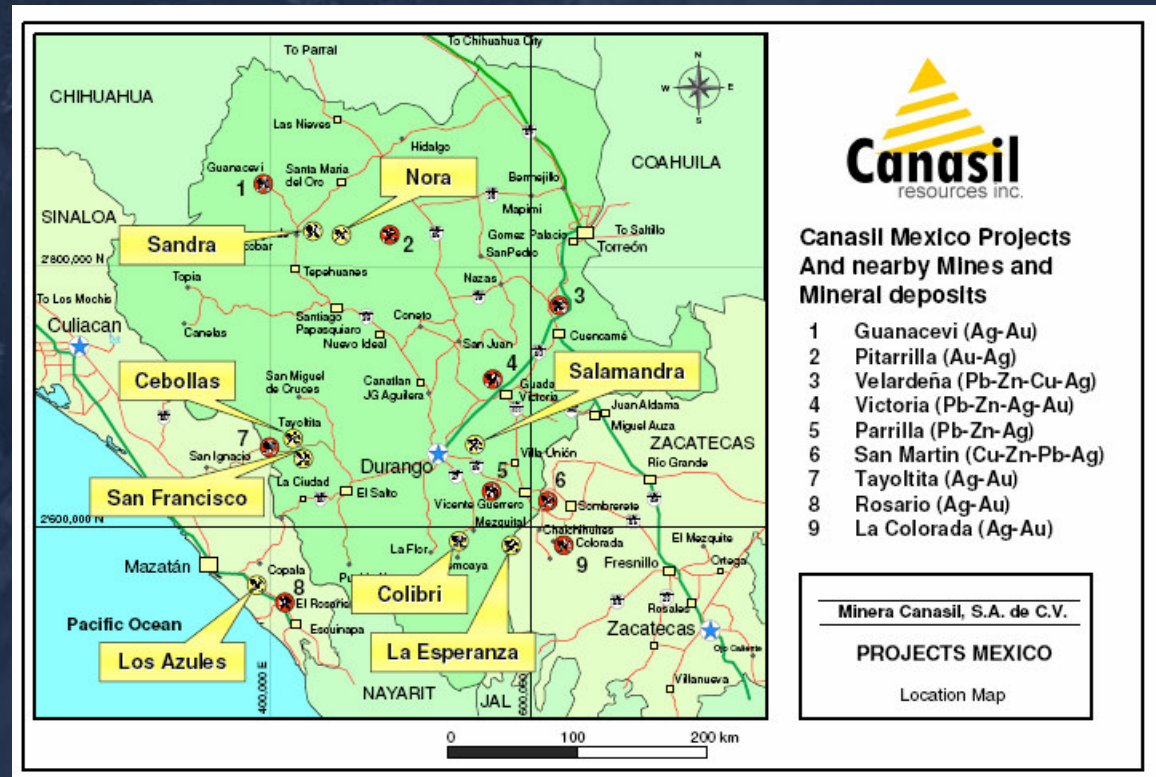
Fully diluted:	37,438,342

Controlled by insiders & associates	8,000,000
Capital raised to date:	\$9,033,948
Average price per issued share:	\$ 0.315
Additional Capital on full dilution:	\$3,166,900



Mexico Operations and exploration projects:

- 100% owned local operating subsidiary with experienced and “well connected” local operations team
- Full time geological and support staff, active exploration and project acquisition program
- Most projects 100% owned; acquired through staking of claims or acquisition agreements with manageable terms
- All projects have high upside exploration potential close to several current or past producing mines
- Centrally located around Durango with excellent road access & infrastructure; focused & efficient exploration programs



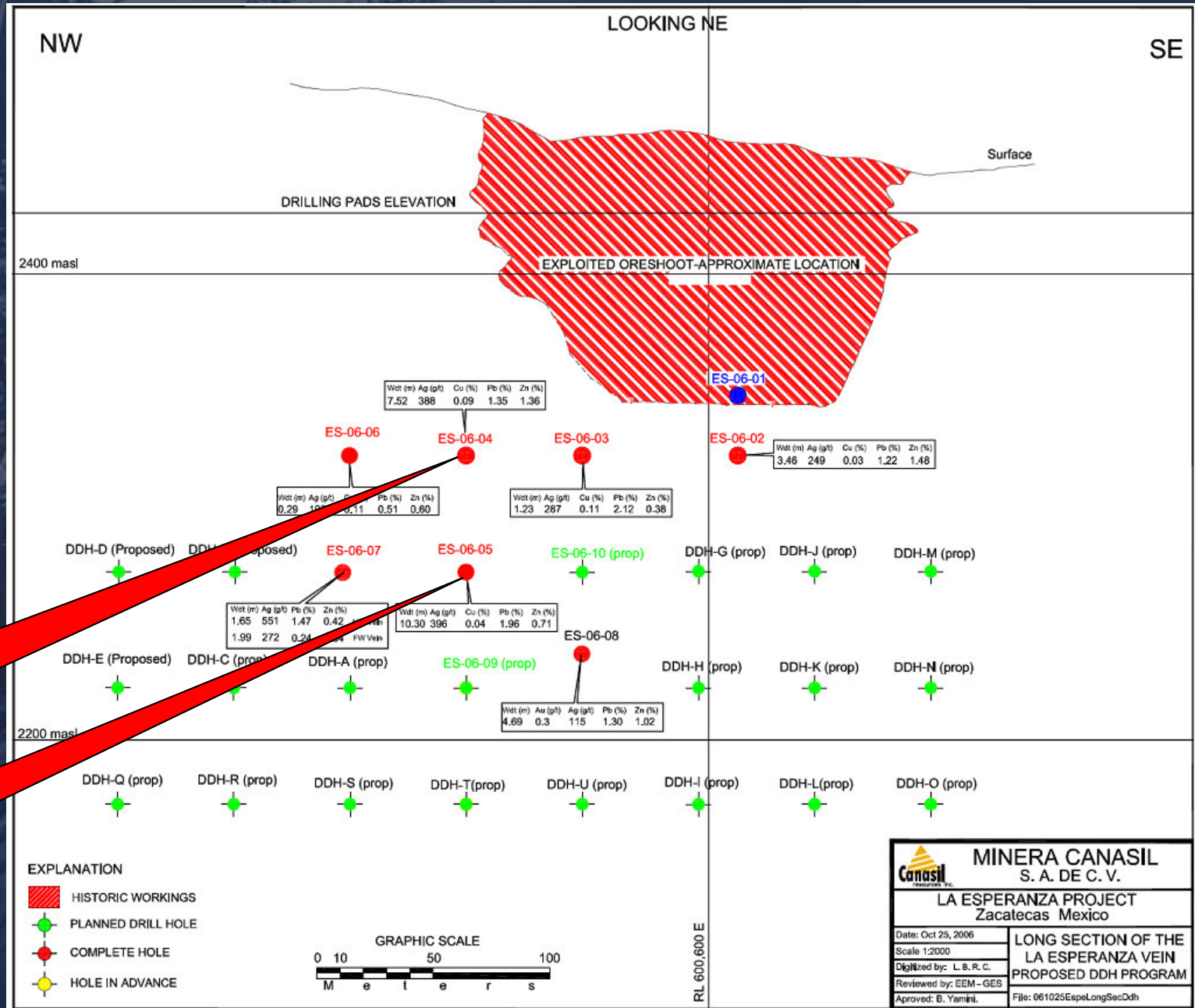
Mexico Projects	Commodity	Claim Area & Title		Status
		Title	hectares	Sept. 2006
Sandra & Nora	Au, Ag, Zn	100%	2,001	Drill ready
San Francisco	Au, Ag	100%	500	Mapping, Samp.
Los Azules	Au, Ag, Cu	100%	7,844	Mapping, Samp.
Colibri	Ag, Zn, Pb	100%	6,413	Phase 1 drilling
Salamandra	Ag, Zn	Opt. 100%	2,778	Phase 1 drilling
La Esperanza	Ag, Zn, Pb	Opt. 100%	435	Phase 2 drill ready
Tres Marias & Cebollas	Au, Ag	Opt. 75%	3,163	Drill ready
Salamandra Region	Ag, Zn, Cu	100%	100,000	Regional Evaluation
Total:			123,134	

- Multiple exploration targets
- Gold, Silver, Copper, Zinc, Lead
- Active current exploration and drilling
- 5 drill ready projects
- High potential for discovery

**La Esperanza
Ag-Zn-Pb Project
Long section**

**Strong silver-zinc-
Lead Vein system,
With wide widths and
High Silver grades**

**Open along strike
and at depth**

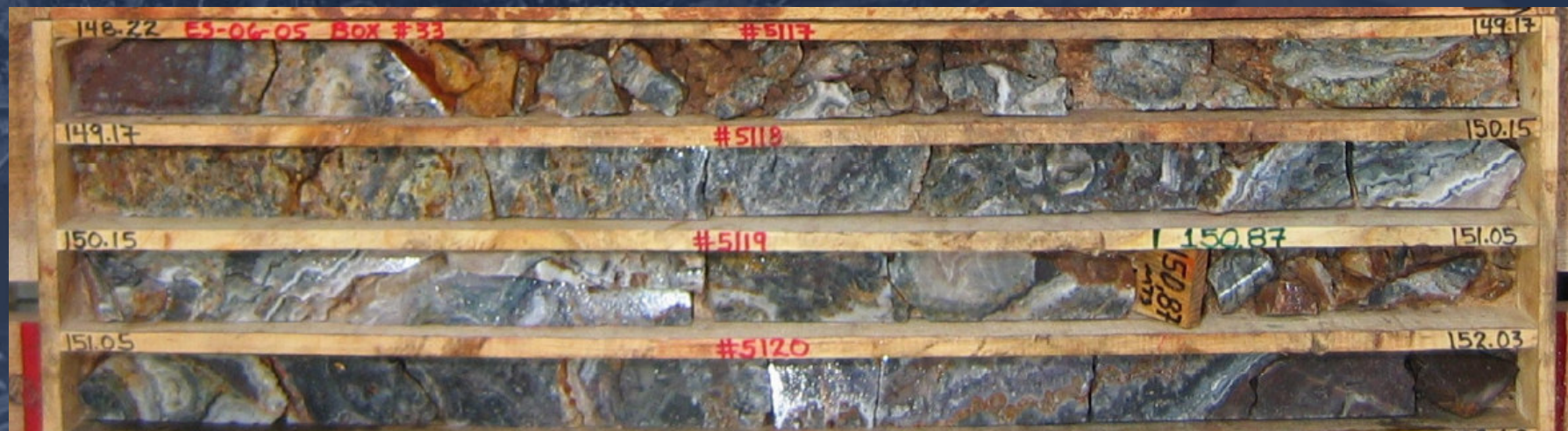


**ES-06-04 (-100 m)
7.52 m true width
Av. 388g/t Ag
634g/t Ag over 2.66 m**

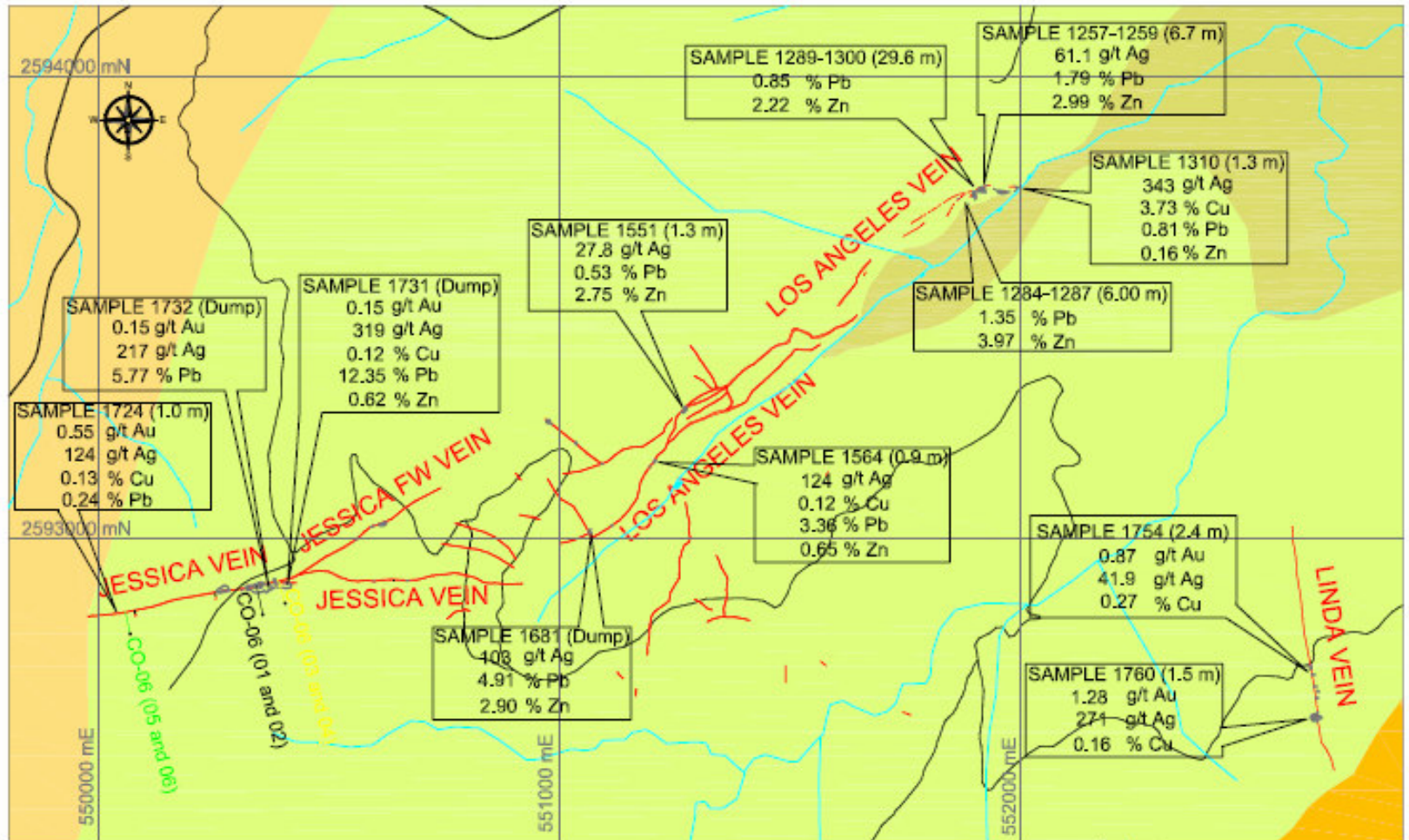
**ES-06-05 (-150 m)
9.8 m true width
Av. 396 g/t Ag
1,360g/t Ag over 1.93 m**

La Esperanza drill hole ES-06-05 – Sept. 2006 – high-grade intercepts






Sample No.	Width m	Silver g/t	Zinc %	Lead %
5117: 148.22 – 149.17m	0.95	2,144	0.29	3.20
5118: 149.17 – 150.15m	0.98	600	0.46	3.60
5125: 155.22 – 155.93m	0.71	837	1.66	20.71

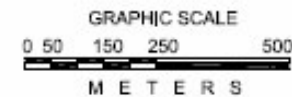


Drill testing
Vein system
Over 2km in
Strike and
Up to 50m
wide



EXPLANATION

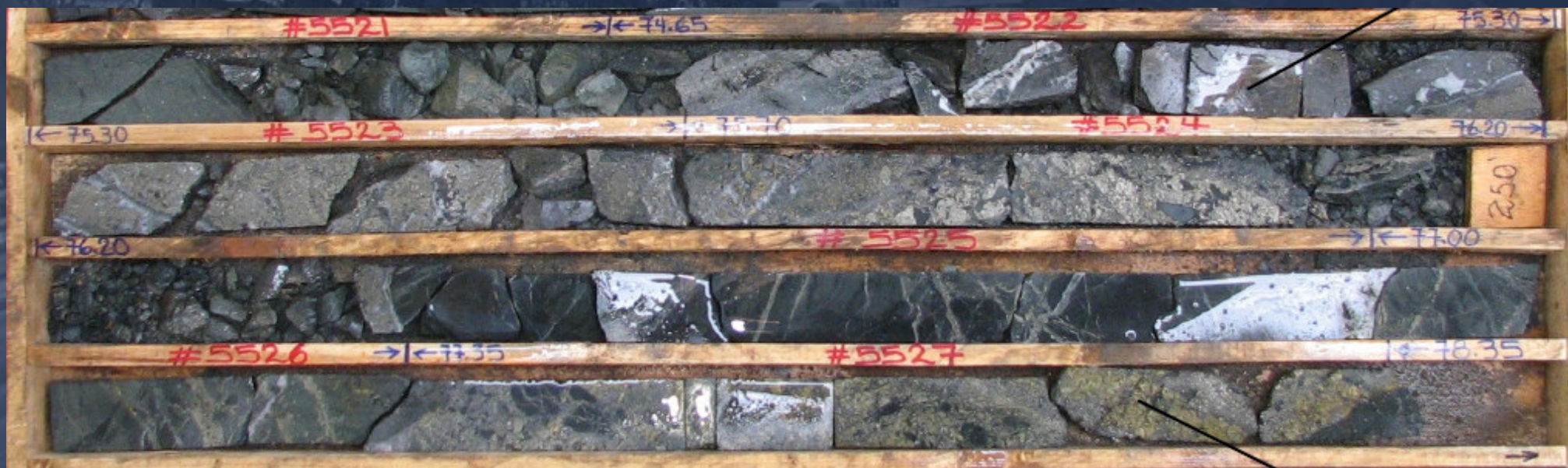
- | | | |
|--|---|---|
|  Vein |  Planned holes |  Porphyritic Andesite |
|  Creek |  Complete hole |  Red conglomerate |
|  Elevation - meters |  Hole in advance |  White dacitic tuff |
|  Road | |  Rhyolite |



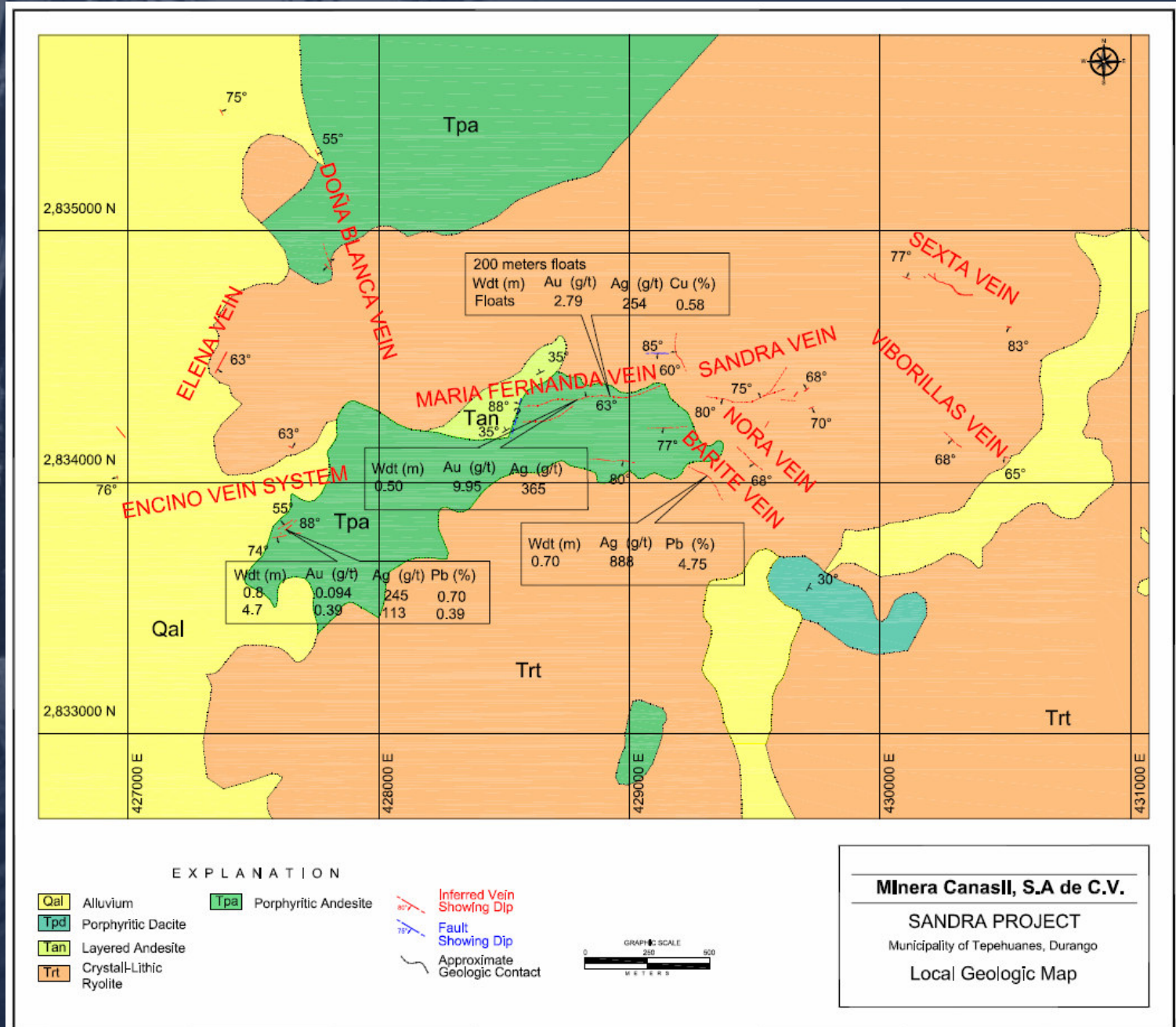
 MINERA CANASIL S. A. DE C. V.	
COLIBRI PROJECT Durango, Mexico	
Date: Dec. 22, 2009	PLAN VIEW OF JESSICA, LINDA AND LOS ANGELES VEIN
Updated:	
Drawn by: J. B. P. C.	
Reviewed by: J. B. P. C.	
Approved: [Signature]	Scale: [Blank]

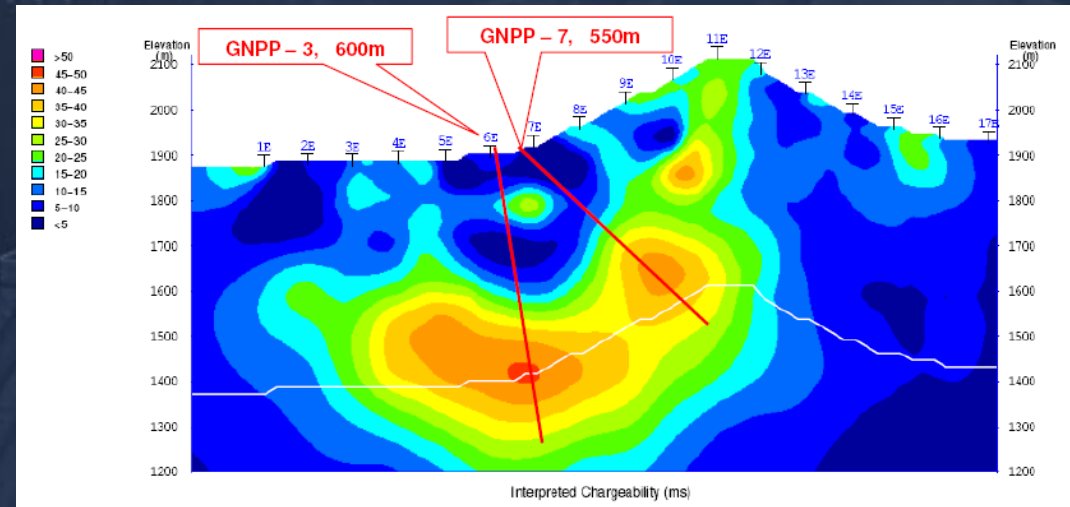
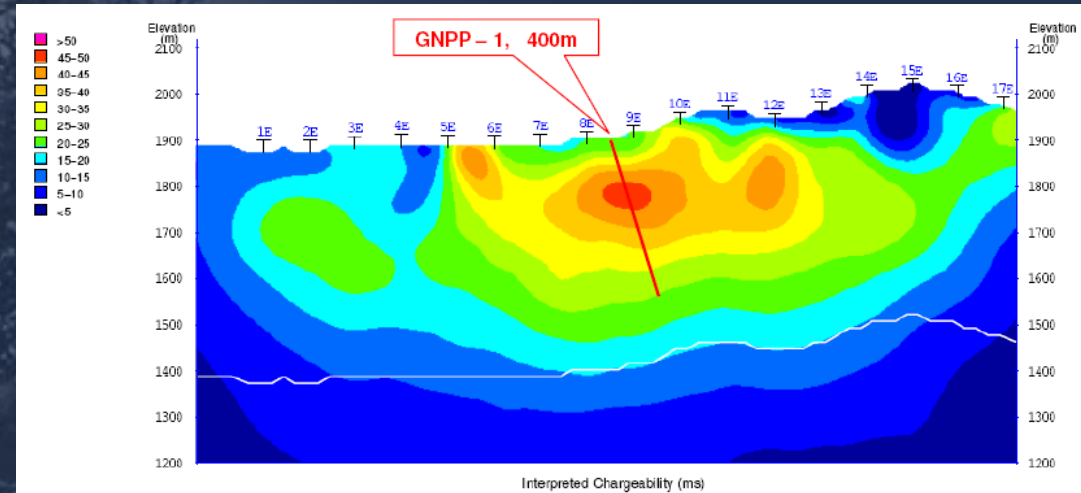
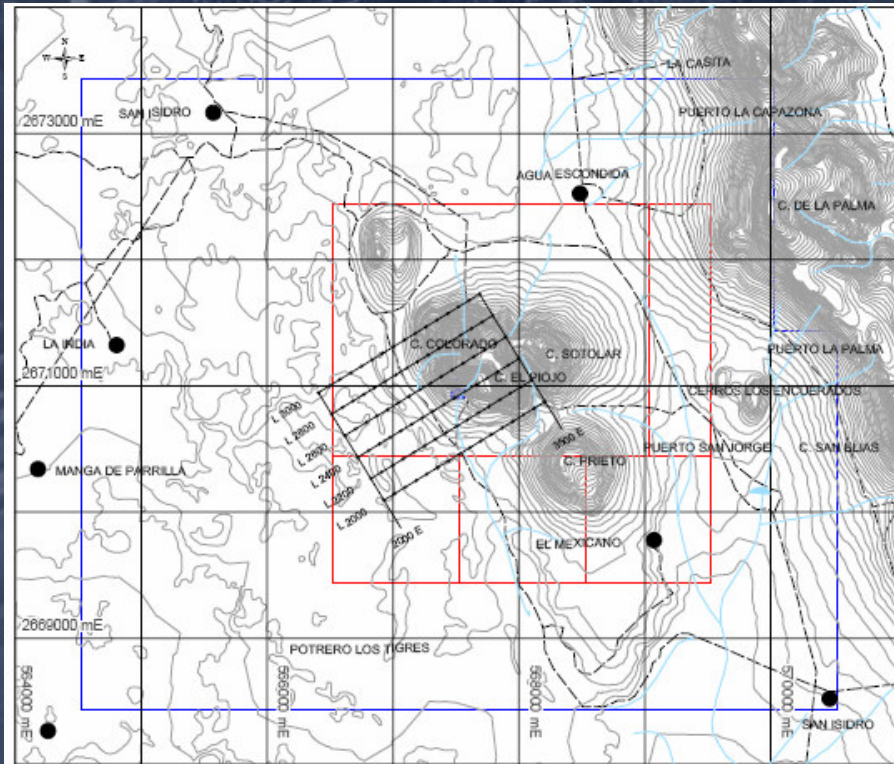
Colibri drill hole CO-07-09 – Mar. 2007 – high-grade intercepts

Intercept	Width m	Silver g/t	Copper %	Zinc %
74.65 – 81.15 m	6.50	65	2.04	1.40
Incl: 74.65 – 78.35 m	3.70	98	3.49	1.96
And: 77.35 – 78.35 m	1.00	177	7.46	0.30



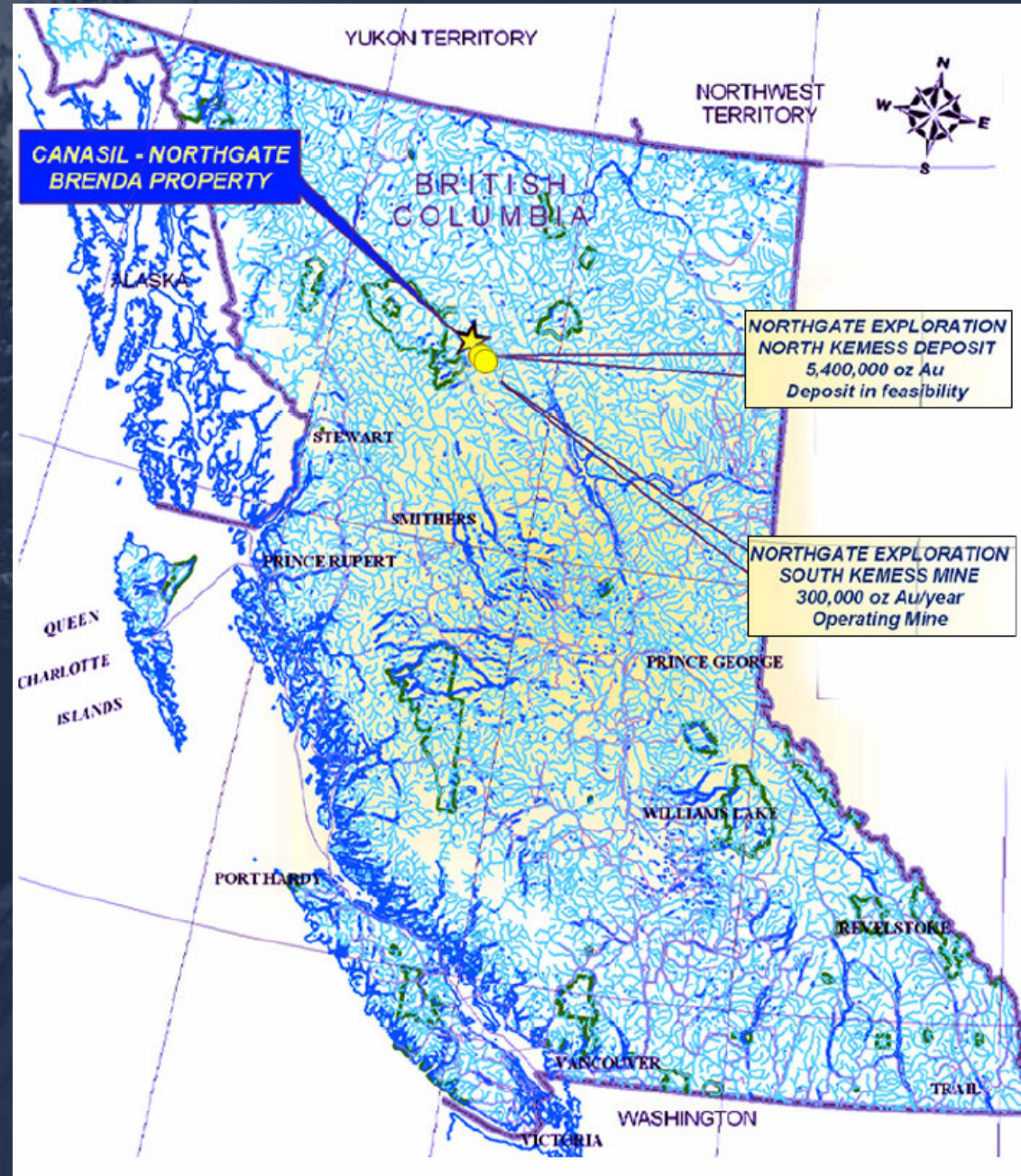
Drill testing
Multiple veins
Over area of
2km by 750m





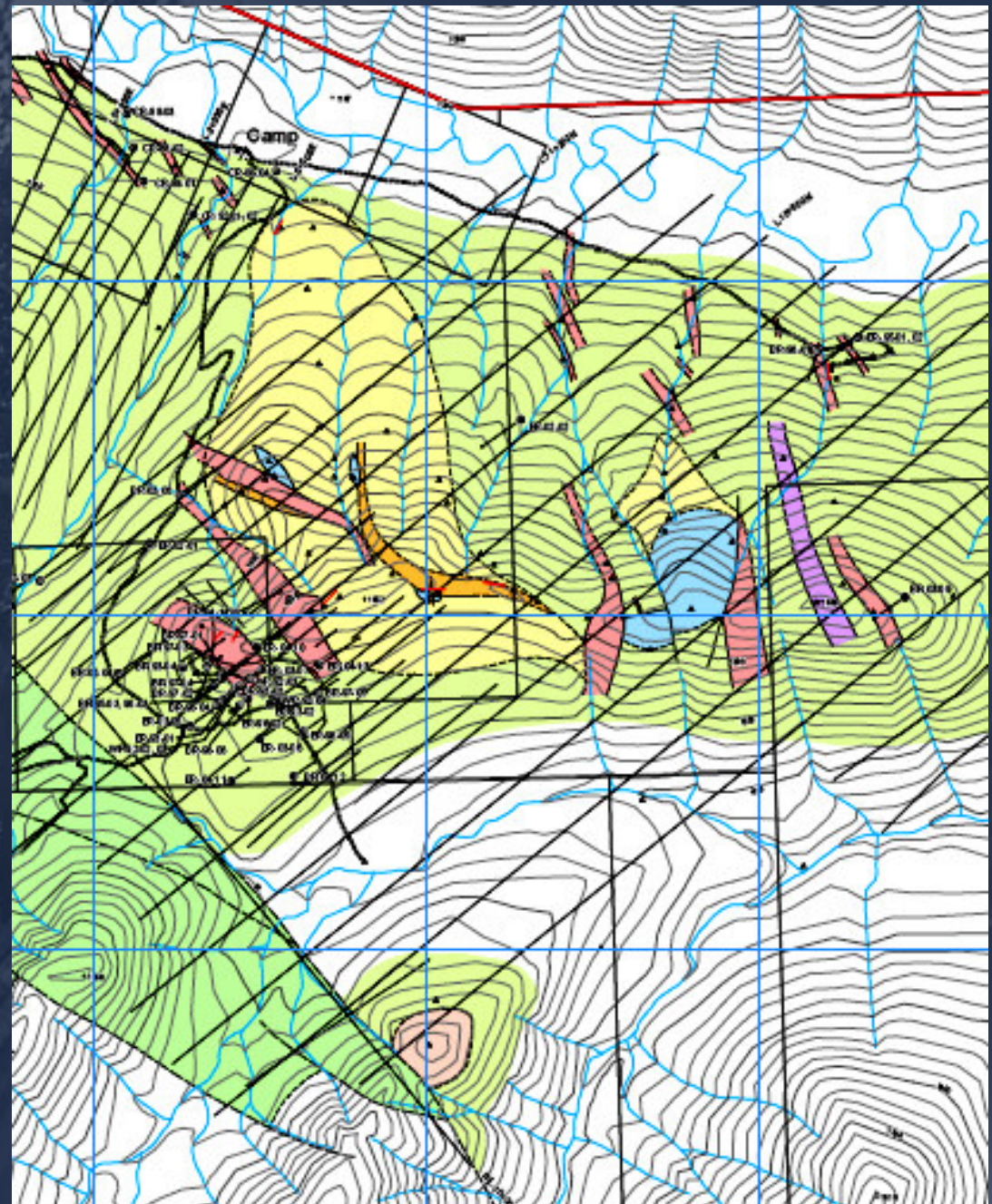
BRENDA Gold/Copper Project B.C., Canada

- **25km NW of Northgate Minerals
Kemess South mine
(+2 mill. oz Gold, 300k oz Au/year)**
- **Excellent access and infrastructure**
- **Past drilling confirmed ore grade
porphyry gold-copper mineralization**
- **2006 mapping confirmed 1,500 x 750m
alteration target zone for drilling**
- **Potential for a multi-million ounce
gold-copper deposit**

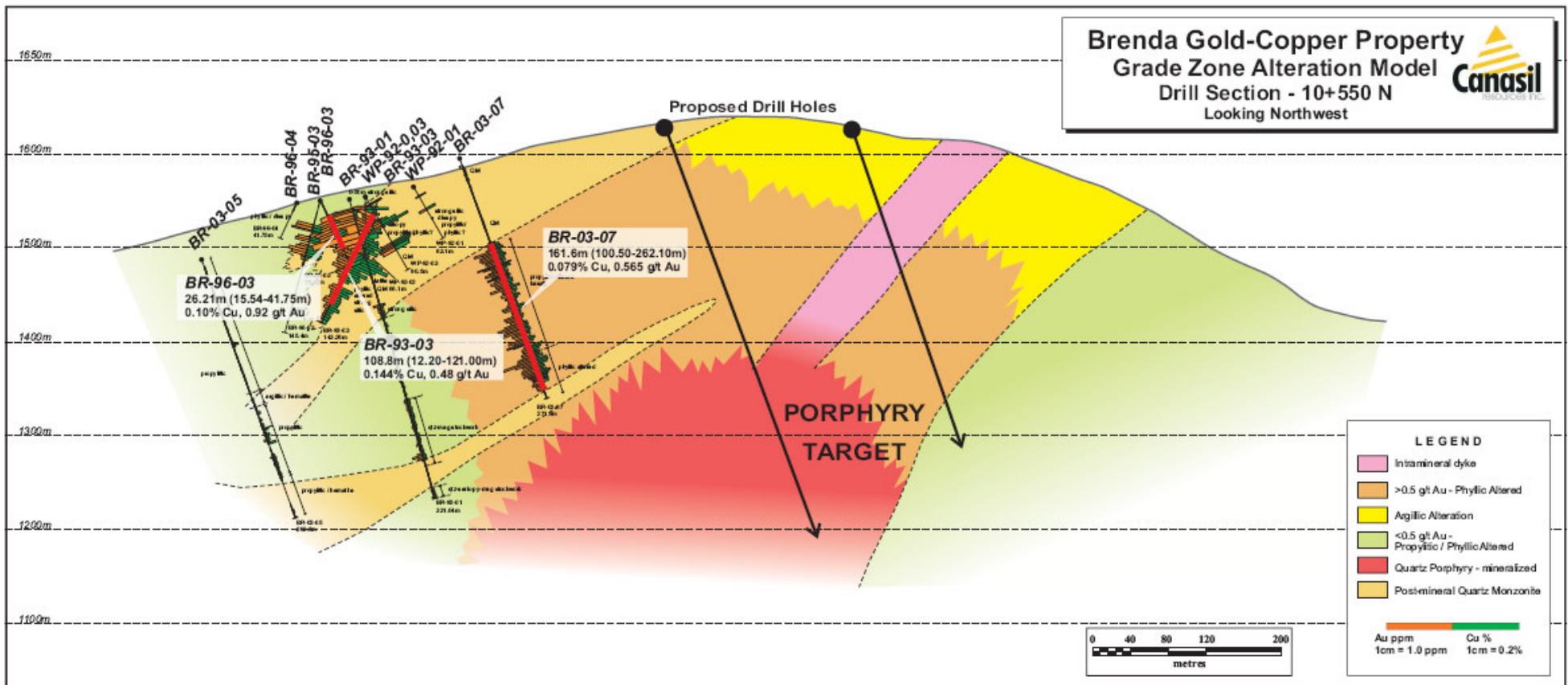


**Brenda Au-Cu Project
2006 Geological Mapping
A. Panteleyev**

- **Intense high temperature argyllic alteration**
- **Alteration mapped over 1.5 km by 750 metres**
- **Alunite zone and ridges above alteration zone**
- **Quartz monzonite dyke in the alteration zone**
- **Alteration zone could extend to over 3 km**



Brenda Au-Cu Project - 2007 3D-IP Geophysics & Diamond Drill Program
Testing below high temperature argillic alteration and alunite zones



2007 Exploration Programs Mexico and B.C., Canada :

- **Mexico drill programs:**

- La Esperanza – Silver-zinc-lead**

- Phase 1 drilling completed 2006**

- Phase 2 (2,500m) drill program planned**

- Colibri – Silver-zinc-lead**

- Phase 1 (1,500m) drill program in progress**

- Salamandra – Zinc-silver**

- Geophysics completed 2006**

- Phase 1 (1,500m) drill program in progress**

- Sandra – Gold-silver-zinc-copper**

- Phase 1 (1,000m) drill program planned**

- **B.C., Canada**

- Brenda – Gold-copper**

- Geophysics and drilling (2,000m) planned**

(2007 planned drill programs fully funded)

***Focused Plan for Value Creation
and Growth in Share Value:***

- 1. Bring together an experienced professional management team with proven record of success.***
- 2. Assemble multiple high quality exploration projects in mineral rich districts and stable jurisdictions.***
- 3. Finance and implement active exploration programs to discover and define mineral resources.***
- 4. Take projects through to production and/or joint ventures to advance projects.***
- 5. Maintain strong capital structure and low dilution to allow greater upside potential in share value.***