

Silver-Zinc and Gold-Copper Exploration in Mexico and British Columbia, Canada

Corporate Presentation

September 2008

“Forward-looking Statements”

This presentation contains certain statements that may be deemed “forward-looking statements”. All statements in this presentation, other than statements of historical fact, that address events or developments that the Company expects to occur, are forward-looking statements. Although the Company believes the expectations expressed in such forward-looking statements are based on reasonable assumptions, Investors are cautioned that such statements are not guarantees of future performance. Forward-looking statements are based on the beliefs, estimates and opinions of the Company’s management on the date the statements are made.

Corporate overview and objectives:

- ***Exploration company focused on enhancing mineral asset and shareholder value***
- ***Exploring for gold, silver, copper and zinc***
- ***Operating in Mexico and B.C., stable mineral-rich environments with excellent infrastructure***
- ***Multiple projects and targets, multiple chances for discovery and success***
- ***Upside potential for share value based on discovery***
- ***Strong capital structure and low dilution to ensure maximum leverage on share value from value created on projects***

Key Factors for Growth in Canasil Share Value:

- ***Active exploration programs***
- ***Leverage to discovery of mineral resources***
- ***Strong operating team to implement programs***
- ***Joint Ventures to advance projects***
- ***Low dilution, significant upside potential in share value***
- ***Location of main exploration projects, close to major producing mines in politically stable jurisdictions***
- ***Leverage to increasing precious and base metal prices***

Management team:

Alvin Jackson (Red Dragon Res. Eurozinc Mining, Amoco/Cyprus)

Michael McInnis (Gateway Gold, Riverstone Res., Abacus Minerals)

Gary Nordin (Nevada Pacific Gold, Eldorado Gold, Bema Gold)

Arthur Freeze (Geological consultant – Goldcorp, Orko Silver)

Bahman Yamini, Pres. & CEO, (Director Canasil since 1993)

Kerry Spong, CFO & VP Finance (Director Primary Metals)

Graham Scott, Corp. Sec. & Legal Counsel (Vector Corp. Fin. Lawyers)

Erme Enriquez, Director Exploration & Development, Mexico

Advisors:

Andre Panteleyev, PH.D. (Consulting geologist)

Iain MacPhail, (Dir. Oremex Res., CFO Far West Mining)

- **Well recognized industry professionals**
- **Extensive exploration experience**
- **Successful track record of discoveries**
- **Experience in taking projects through to production**

**11 Exploration
Projects in
Mexico:**

**200,000 hectares
Combined land
position**

**Located on known
mineralized trends
close to Durango**

**Prospective for
Gold, Silver,
Copper & Zinc**

**High discovery
potential**



Mexico Operations and exploration projects:

- Operating subsidiary with experienced local operations team in Durango
- Full time geological and support staff, active exploration and project acquisition program



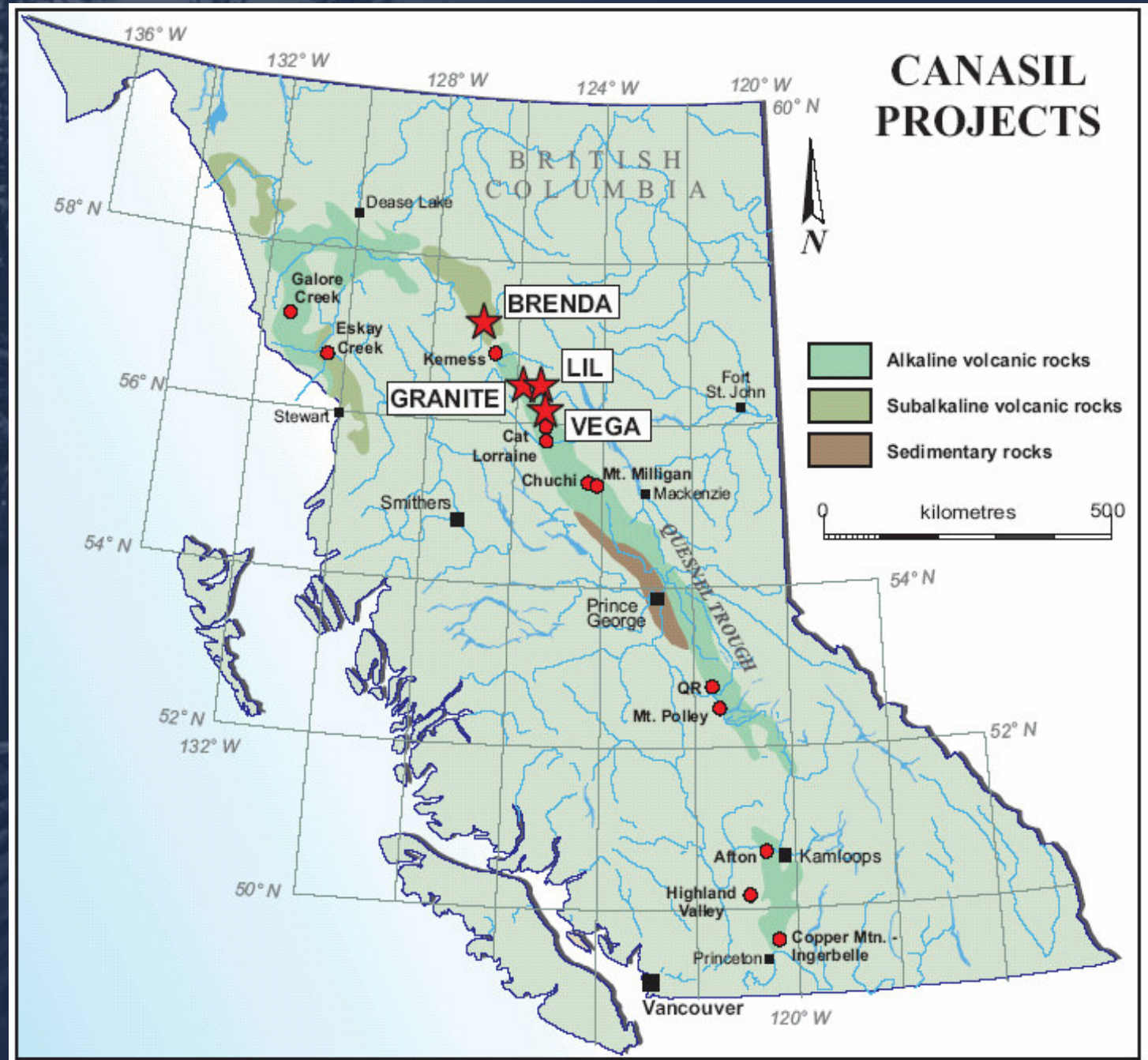
- Focused & cost-effective acquisition program; most projects 100% owned
- Projects located close to current or past producing mines
- Excellent road access & infrastructure
- Efficient implementation of exploration programs

4 Exploration projects in B.C., Canada:

Over 12,000 hectares located on one of the largest mineralized belts In Canada

Located near major producing mines and deposits

Potential for discovery of a multi-million ounce gold-copper deposit



Share and Capital Structure

Low dilution: High potential upside value

Shares issued:	33,877,592
Warrants (\$0.35 - \$0.55: Sep. - Dec. 08):	2,794,000
Options (\$0.20 - \$0.75: 2008 - 2012):	2,833,750

Fully diluted:	39,505,342

Controlled by insiders & associates	Over 12,000,000
Capital raised to date:	\$11,418,115
Average price per issued share:	\$ 0.33
Additional Capital on full dilution:	\$2,501,367

(June 30, 2008)

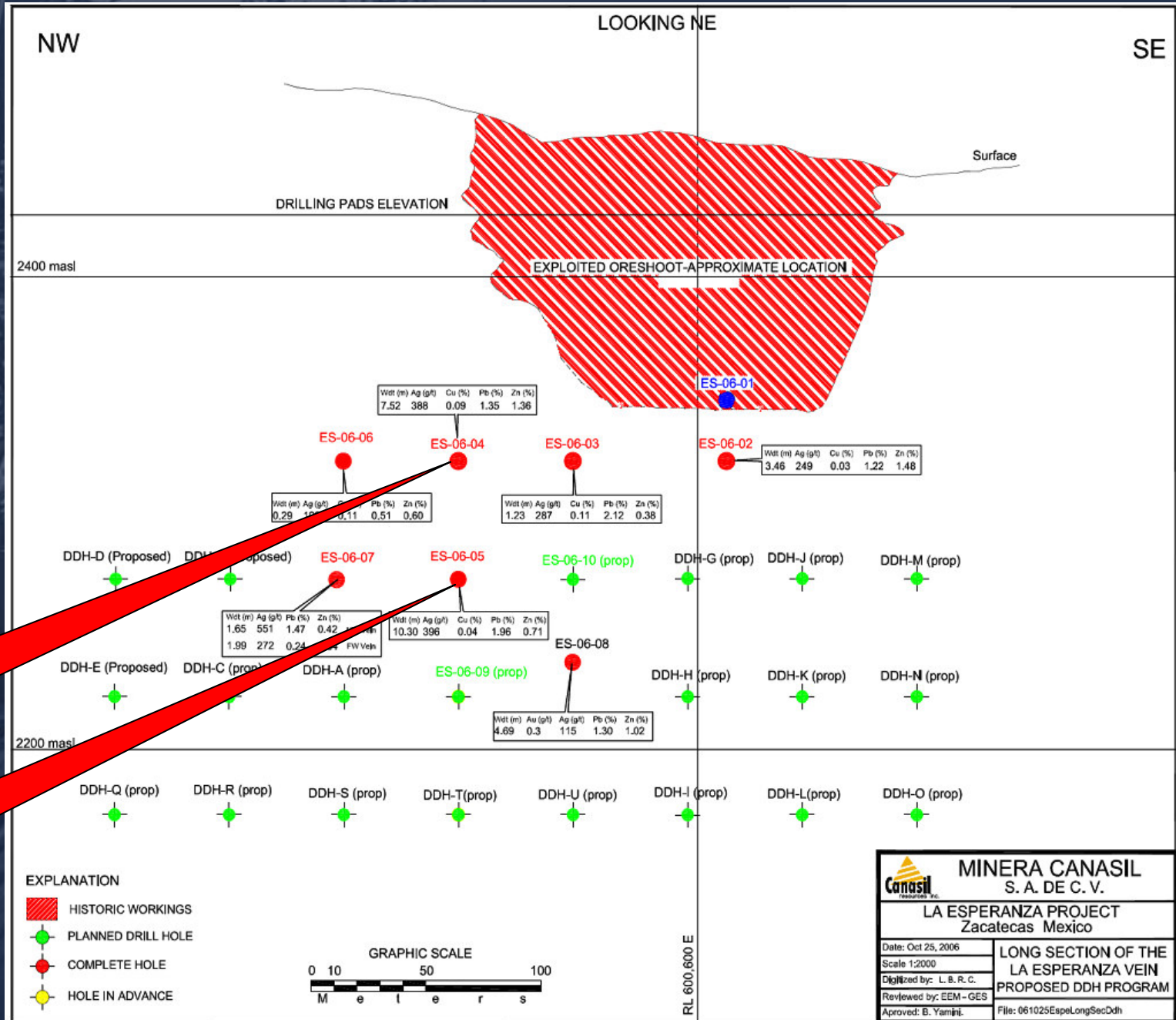
Exploration Projects Focus 2008/2009:

- 1. La Esperanza, Zacatecas, Mexico***
High grade Silver-Zinc-Lead epithermal vein
- 2. Salmandra & Victoria, Durango, Mexico***
Large Silver-Zinc system & Regional Exploration targets
Option and JV agreement with Blackcomb Minerals
- 3. Sandra & Escobar projects, Durango, Mexico***
Large Gold-Silver system & high grade epithermal veins
Option and JV agreement with Pan American Silver
- 4. Colibri, Durango, Mexico***
Large Silver-Copper-Zinc-Lead epithermal vein system
- 5. Brenda, BC, Canada***
Porphyry Gold-Copper system
- 6. New Projects Mexico – Vizcaino & Carina***
Developing Gold & Silver targets

**La Esperanza
Ag-Zn-Pb Project
Long section**

**Strong silver-zinc-
Lead Vein system,
With wide widths and
High Silver grades**

**Open along strike
and at depth**

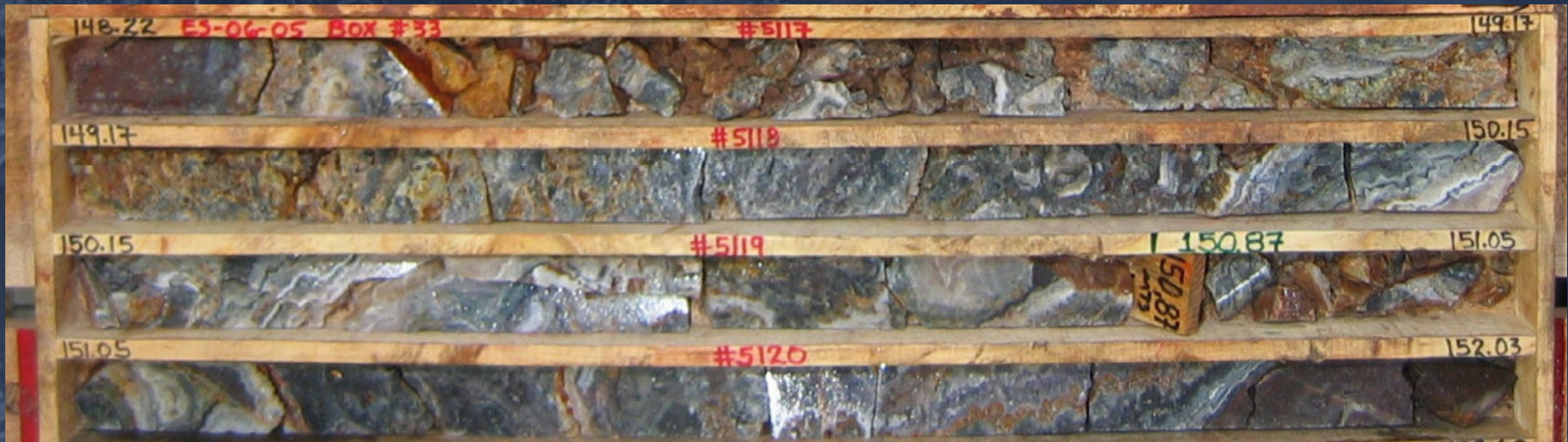


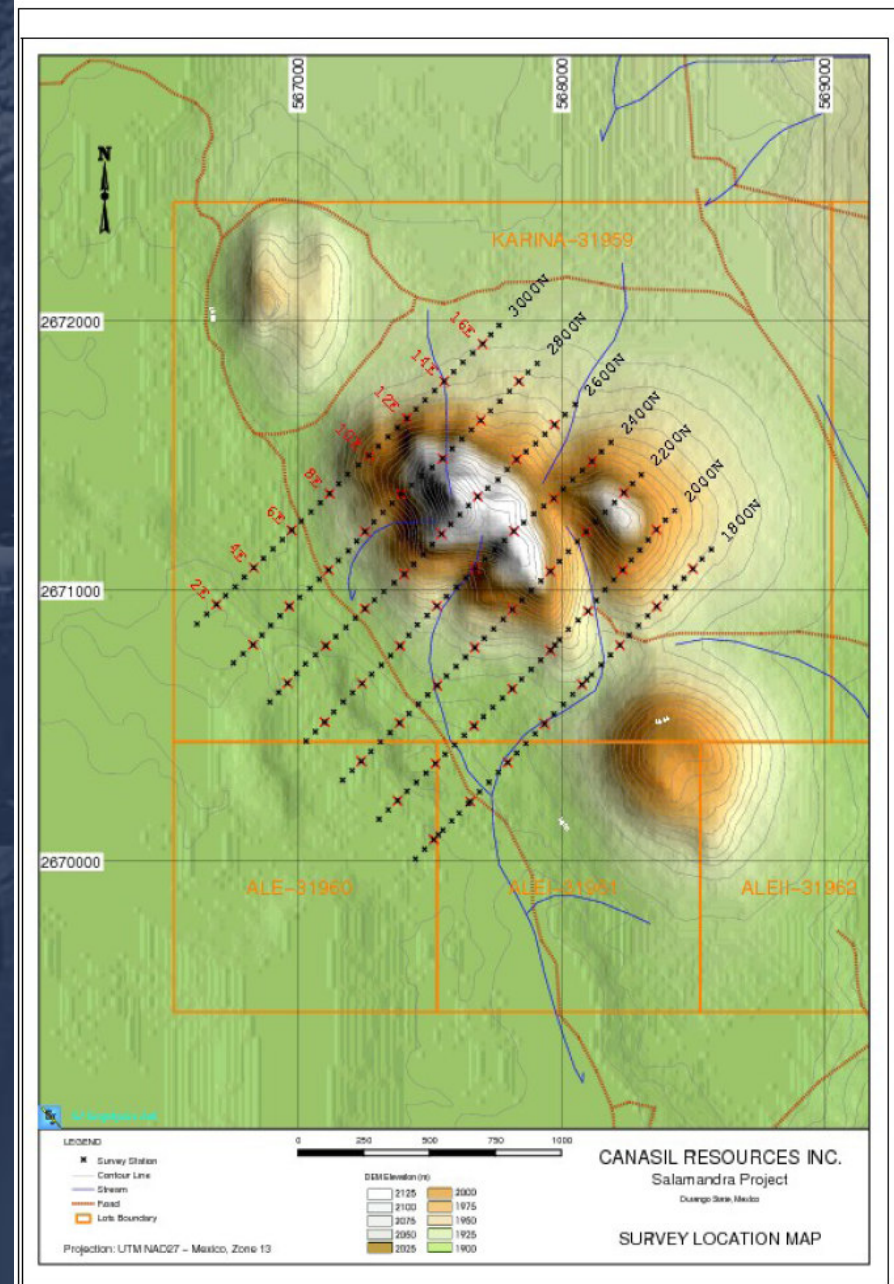
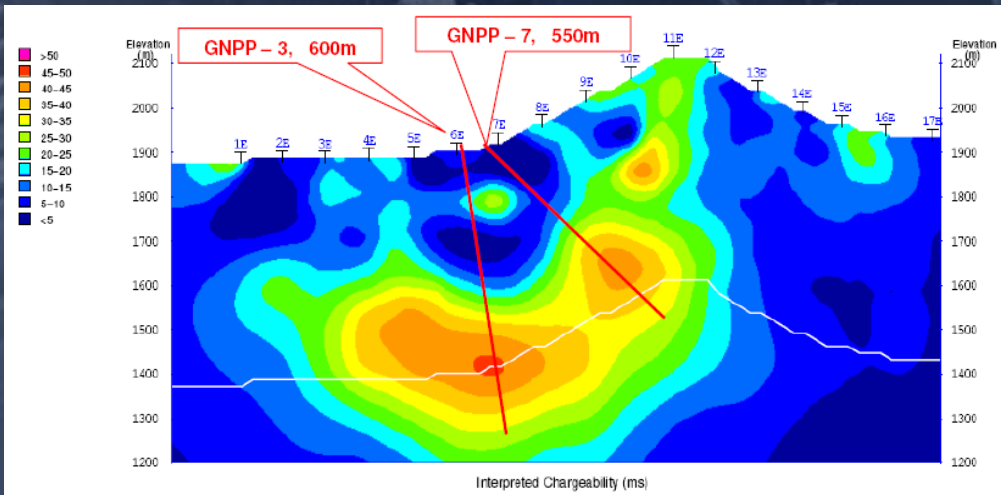
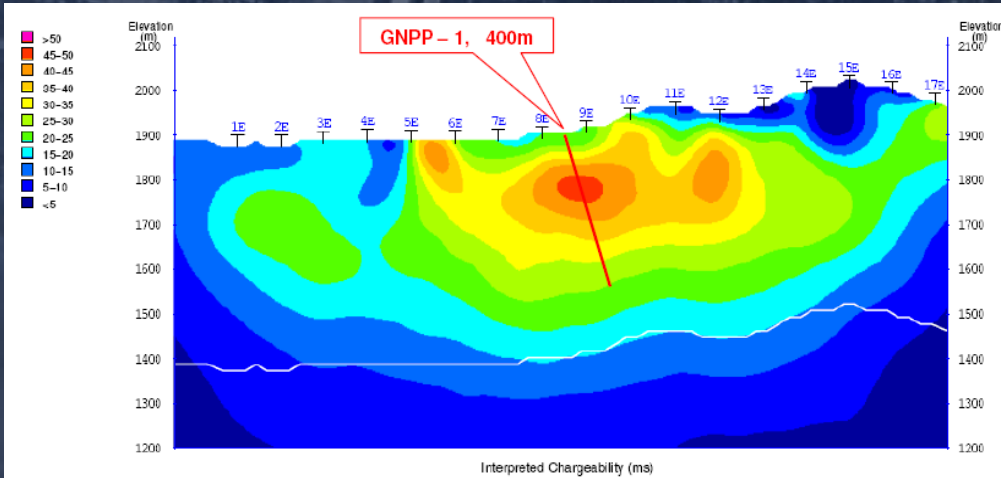
ES-06-04 (-100 m)
7.52 m true width
Av. 388g/t Ag
634g/t Ag over 2.66 m

ES-06-05 (-150 m)
9.8 m true width
Av. 396 g/t Ag
1,360g/t Ag over 1.93 m

La Esperanza drill hole ES-06-05 – Sept. 2006 – high-grade intercepts

Sample No.	Width m	Silver g/t	Zinc %	Lead %
5117: 148.22 – 149.17m	0.95	2,144	0.29	3.20
5118: 149.17 – 150.15m	0.98	600	0.46	3.60
5125: 155.22 – 155.93m	0.71	837	1.66	20.71





Drill Hole	Intercept From – To m	Width m	Silver g/t	Zinc %	Copper %	Lead %
SA-07-02	7.40 – 17.25	9.85	102	0.55	0.02	0.03
SA-07-02	27.65 – 35.10	7.45	50	12.00	0.22	0.06
SA-07-03	195.00 – 205.00	10.00	71	3.48	0.06	1.26
SA-07-04	196.00 – 204.00	8.00	26	1.39	0.08	0.35
SA-07-05	262.00 – 267.66	5.66	19	2.75	0.00	0.03
SA-07-06	3.40 – 15.00	11.60	13	4.05	0.20	0.03
SA-07-08	261.00 – 271.00	10.00	29	3.51	0.04	0.42
SA-07-09	355.10 – 363.30	8.20	4	2.09	0.05	0.01
SA-07-10	230.00 – 234.35	4.35	5	5.51	0.02	0.05
SA-07-11	58.40 – 62.20	3.80	40	1.30	0.12	1.16
SA-07-12	228.50 – 230.90	2.40	10	2.87	0.01	0.09

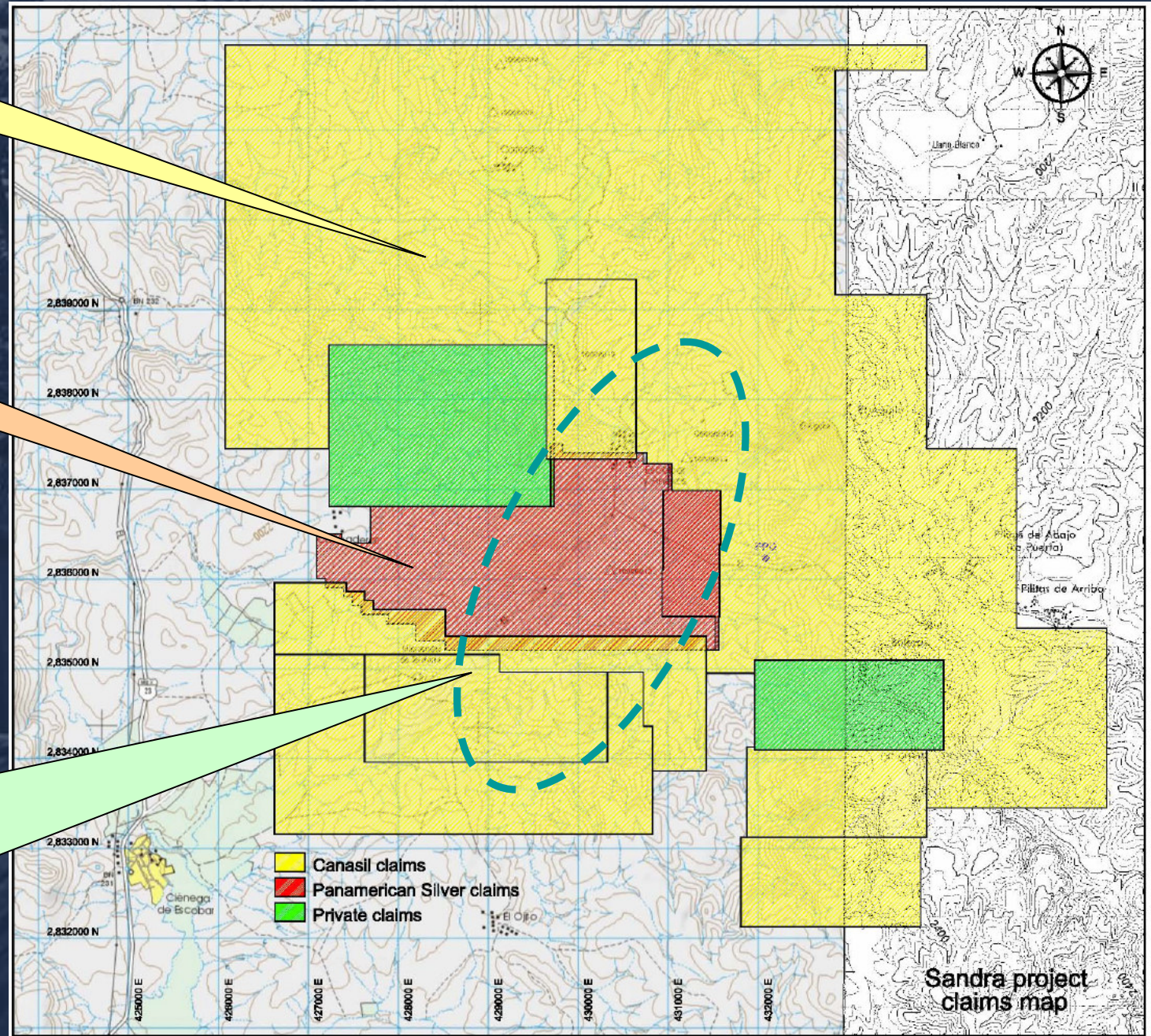
11 out of 12 drill holes intersected significant zinc-silver mineralized zones

*Canasil Sandra
Claims 5,500 ha*

*Pan American
Silver Escobar
Claims 600 ha*

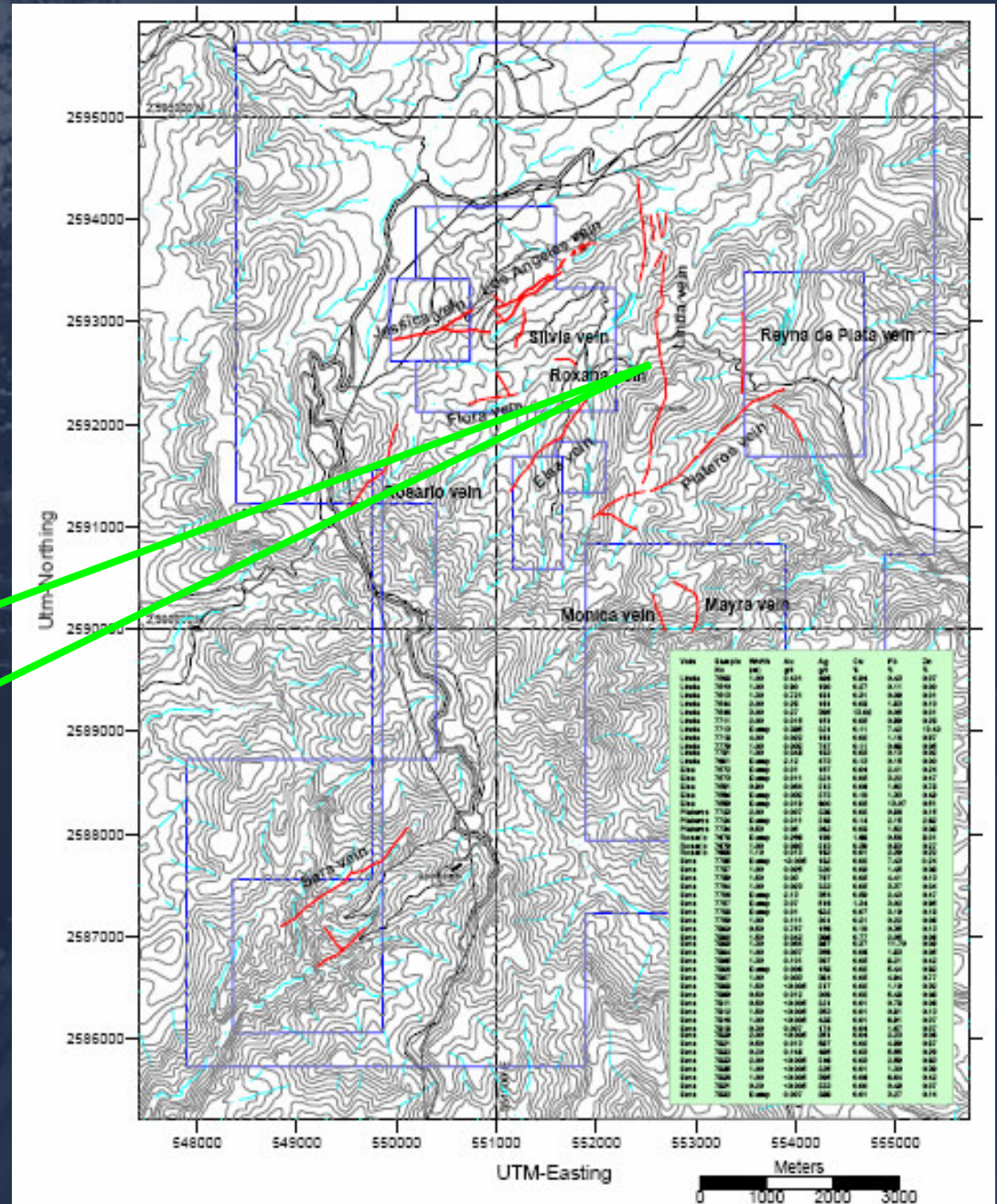
*Canasil option to earn
51% in Escobar Claims
Pan American option to
back-in to 51% in
combined claims and
advance project to
feasibility & production*

*Large Gold-Silver
mineralized system
with high grade
veins – samples up
to 10 g/t gold and
1,488 g/t silver*



16,000 hectares hosting multiple vein system with over 14 km combined strike length

- Linda vein over 4 km strike length
- Drill intercept 3.7 metres with 98 g/t Ag, 3.49% Cu & 1.96% Zn
- Surface samples up to 13.02% Cu and 396 g/t Ag



Linda Vein drill hole CO-07-09

Intercept	Width m	Silver g/t	Copper %	Zinc %
74.65 – 78.35 m	3.70	98	3.49	1.96
Incl: 77.35 – 78.35 m	1.00	177	7.46	0.30

Linda Vein drill hole CO-07-12

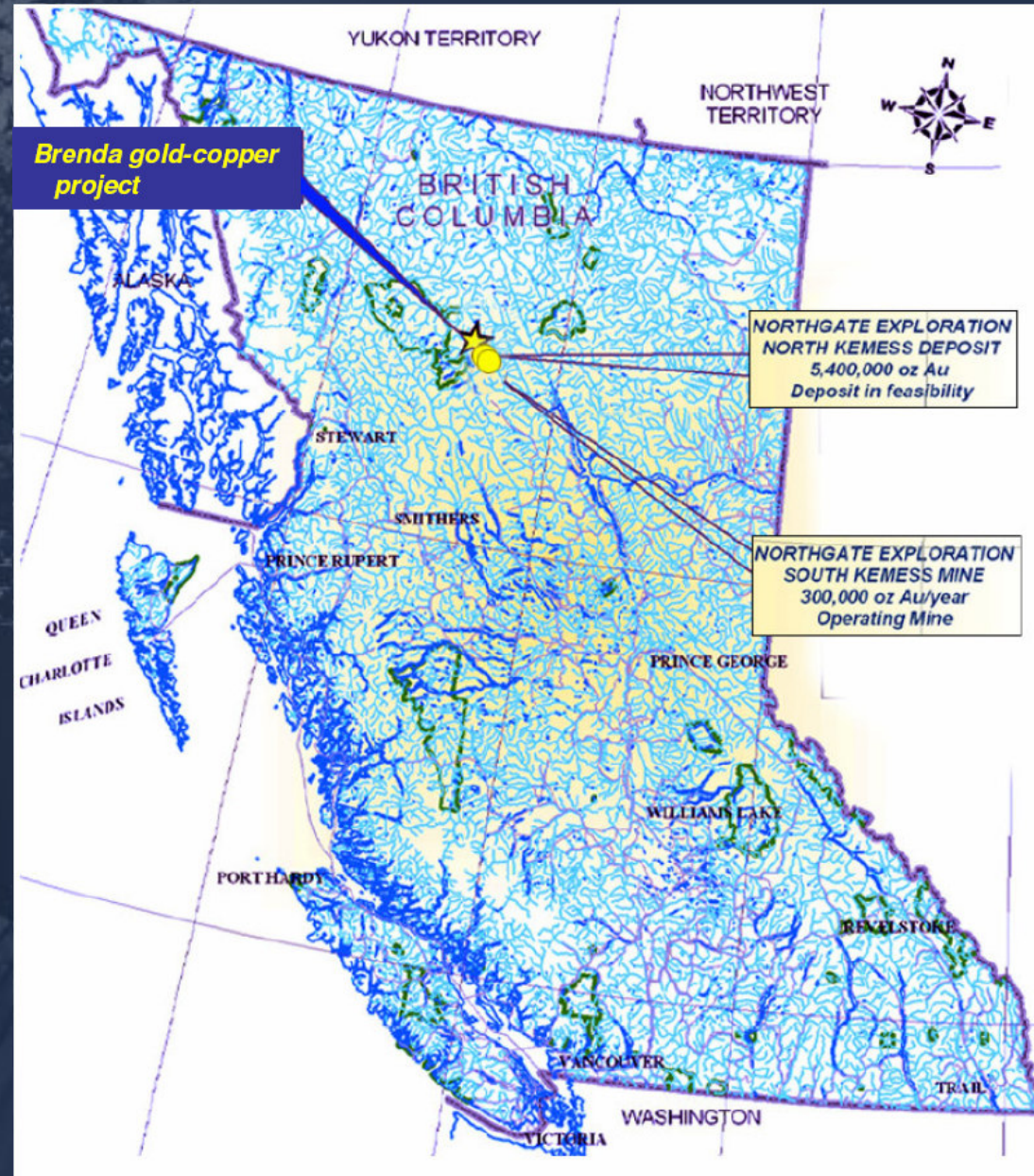
158.60 – 159.20 m	0.60	87	1.10	0.98
167.00 – 170.30 m	3.30	63	2.48	0.12
Incl: 168.30 – 169.30	1.00	173	6.82	0.16

Linda Vein drill hole CO-07-13

37.50 – 37.75 m	0.25	568	23.10	0.29
144.84 – 158.00 m	13.16	33	1.17	0.10
Incl: 144.84 – 148.02 m	3.18	58	1.76	0.25
And: 150.08 – 156.00 m	5.92	37	1.43	0.05

BRENDA Gold/Copper Project B.C., Canada

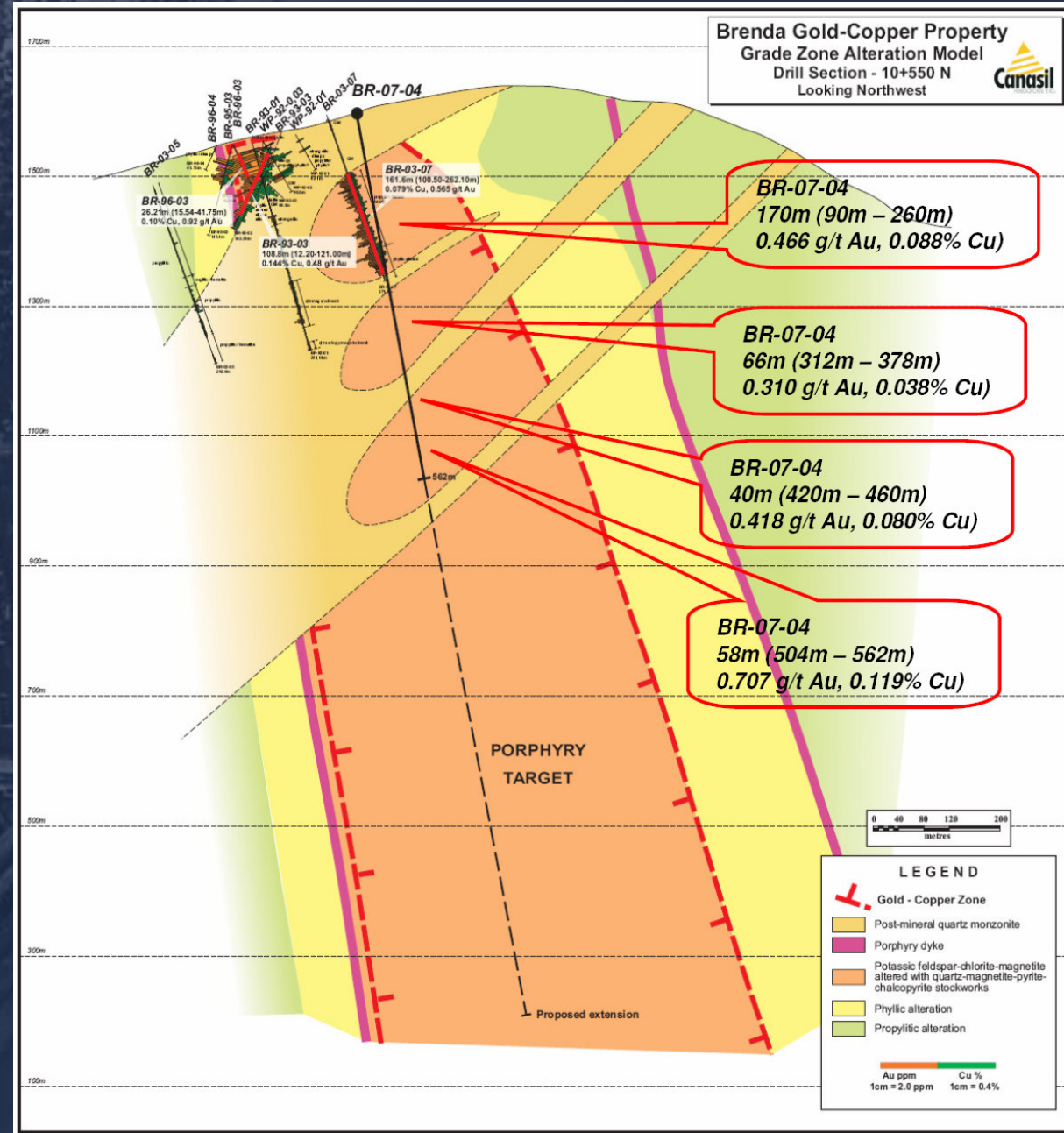
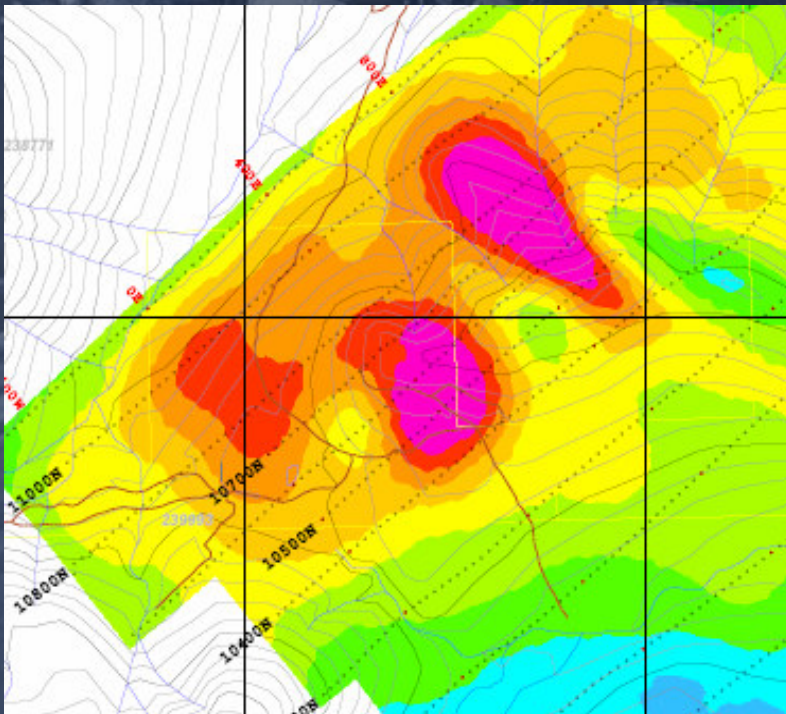
- **25km NW of Northgate Minerals Kemess South mine (+2 mill. oz Gold, 300k oz Au/year)**
- **Excellent access and infrastructure**
- **Past drilling confirmed ore grade porphyry gold-copper mineralization**
- **2007 drilling and geophysics indicates potential for deep porphyry gold-copper system**
- **Potential for a multi-million ounce gold-copper deposit**



Brenda Au-Cu Project

2007 Diamond drill program:
Increasing gold and copper grades with depth

3D-IP Geophysics
Chargeability at -300 metres

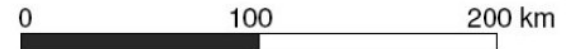


New Projects Durango & Sinaloa, Mexico:

1. **El Eden, Sinaloa**
4,000 hectares
Copper-Silver-Gold
2. **Vizcaino, Durango**
600 hectares
Gold-Silver
3. **Carina, Durango**
3,100 hectare
Silver-Zinc-Lead

8 Prospects on Major Durango-Zacatecas Silver Trend

**Durango-Zacatecas-Sinaloa
Historic & Producing Mines**
New Discoveries
Canasil Projects
New Canasi Projects



**Silver Standard
La Pitarilla**

**Geologix Explorations
San Augustin**

**Orko Silver
La Preciosa**



**MAG Silver
Juanicipio / Fresnillo**

**CanPlats
Camino Rojo**

***Well Positioned to Create
Mineral Asset and Share Value:***

- 1. Experienced professional management and operating team.***
- 2. Multiple high quality exploration projects in mineral rich districts and stable jurisdictions.***
- 3. Implementing active exploration programs to discover and define mineral resources.***
- 4. Joint ventures to advance major projects.***
- 5. Strong capital structure and low dilution allowing greater upside potential in share value.***