

***Silver-Gold-Copper-Zinc Exploration in
Mexico and British Columbia, Canada***

Corporate Presentation

September 2017

“Forward-looking Statements”

This presentation contains certain statements that may be deemed “forward-looking statements”. All statements in this presentation, other than statements of historical fact, that address future production, reserve potential, exploration drilling, exploration activities and events or developments that the Company expects to occur, are forward-looking statements. Information inferred from the interpretation of drilling results and information concerning mineral resource estimates may also be deemed to be forward-looking statements as they constitute what might be found to be present when and if a project is actually developed. Although the Company believes the expectations expressed in such forward-looking statements are based on reasonable assumptions, such statements are not guarantees of future performance and actual results may differ materially from those in the forward-looking statements. Factors that could cause the actual results to differ materially from those in the forward-looking statements include market prices, exploration and exploitation success, and continued availability of capital and financing, and general economic, market or business conditions. Investors are cautioned that such statements are not guarantees of future performance and actual results and developments may differ materially from those projected in the forward-looking statements. Forward-looking statements are based on the beliefs, estimates and opinions of the Company’s management on the date the statements are made. The Company undertakes no obligation to update these forward-looking statements in the event that management beliefs, estimates or other factors should change.

Platform for Creating Shareholder Value

Objectives:

- ***Create Shareholder Value***
- ***Maximize Potential for Success***
- ***Manage and Reduce Risk***

Value Drivers:

- ***Mineral Resource Discovery***
- ***Active Exploration, High Quality Partners***
- ***Low Dilution: High Leverage to Added Value***

Focus:

- ***Explore for Silver, Gold, Copper, Lead and Zinc***
- ***Multiple High Potential Projects***
- ***Durango & Zacatecas, Mexico, and BC, Canada***
- ***Mineral Rich Locations, Low Risk, Excellent Infrastructure***

Major Factors for Building Shareholder Value:

- Shareholder focused management team***
- Extensive 100% owned project portfolio***
- Drill program at La Esperanza Silver project in Durango and Zacatecas States, Mexico***
- Several projects with potential for hosting large Silver, Gold and Base Metal mineralized systems***
- Spin-off of BC projects, distribution of Spin-Co shares***
- Strong working capital and share structure***
- 7 drill ready projects – 5 in Mexico and 2 in BC***
- Significant exploration expenditures in 2017
High discovery potential***

Directors, Officers, Advisors:

Alvin Jackson, Director
Michael McInnis, Director
Arthur Freeze, Director
Iain MacPhail, Director
Bahman Yamini, Director, Pres. & CEO,
Kerry Spong, CFO & VP Finance
Graham Scott, Corp. Sec., Legal Counsel
Erme Enriquez, Dir. Expl. & Dev., Mexico
Gary Nordin, Advisor
Jerry Blackwell, Advisor, (Qual. Person)



Shares issued:	101,897,372	52 Week Price Range:	\$0.13 - \$0.68
Warrants:	4,194,250	Current Share price:	\$0.145
Options:	7,897,500	Market Capitalization:	\$14.8 Million
Fully diluted:	113,889,122	3 Mth. Av. Trading Volume:	79,900
Capital raised to date:	\$23,100,000	Major shareholders:	
Av. price per issued share:	\$0.23	Management:	15%
Working Capital:	\$1,625,000	Major Private Investors:	30%
Add. Cap. on Full Dilution:	\$2,944,275	Institutional:	20%

Sept. 6 2017

***High Potential Silver-Gold Project
Portfolio in Mexico and BC, Canada***

***4 Exploration Projects In BC, Canada
Located on Major Mineralized Trend Close
to Past Producing Mine and New Deposits
Gold, Silver, Copper
Potential for Discovery of Large Gold-
Copper Porphyry Deposit
BC Projects planned spin-off***

***7 Exploration Projects In Mexico
Located on known Mineralized Trend in
Durango and Zacatecas States
Silver, Gold, Copper, Lead & Zinc
Operating Team and Base in Durango
Active Drill Programs
Very High Discovery Potential***



Multiple Drill Ready Projects Portfolio:

1. La Esperanza, Durango & Zacatecas, Mexico

High-grade Silver-Zinc-Lead vein system with district scale potential

On recognized Fresnillo Silver trend close to several operating mines

2,452 metre drill program completed May 2017 returned high grade Ag-Zn-Pb intercepts

2. Sandra-Escobar, Durango, Mexico:

Gold Silver, disseminated and high grade veins, 5 target zones over 25 sq. km. area

Option agreement with Orex Minerals, Phases 1, 2 & 3 drill programs completed

Initial Resource Estimate and Metallurgical Testing completed

Orex completed expenditures for 55% earn-in to form 55:45 JV

3. Salamandra, Durango, Mexico

Large Silver-Zinc-Copper mineralized system

Airborne ZTEM survey, ground geophysics, surface sampling & 17,980 m drilling to date

4. Brenda, BC, Canada

Gold/Copper Porphyry system close to Aurico Metals Kemess deposit

5. Carina, Durango, Mexico

Disseminated Silver Gold; Adjacent to Coeur d'Alene La Preciosa deposit

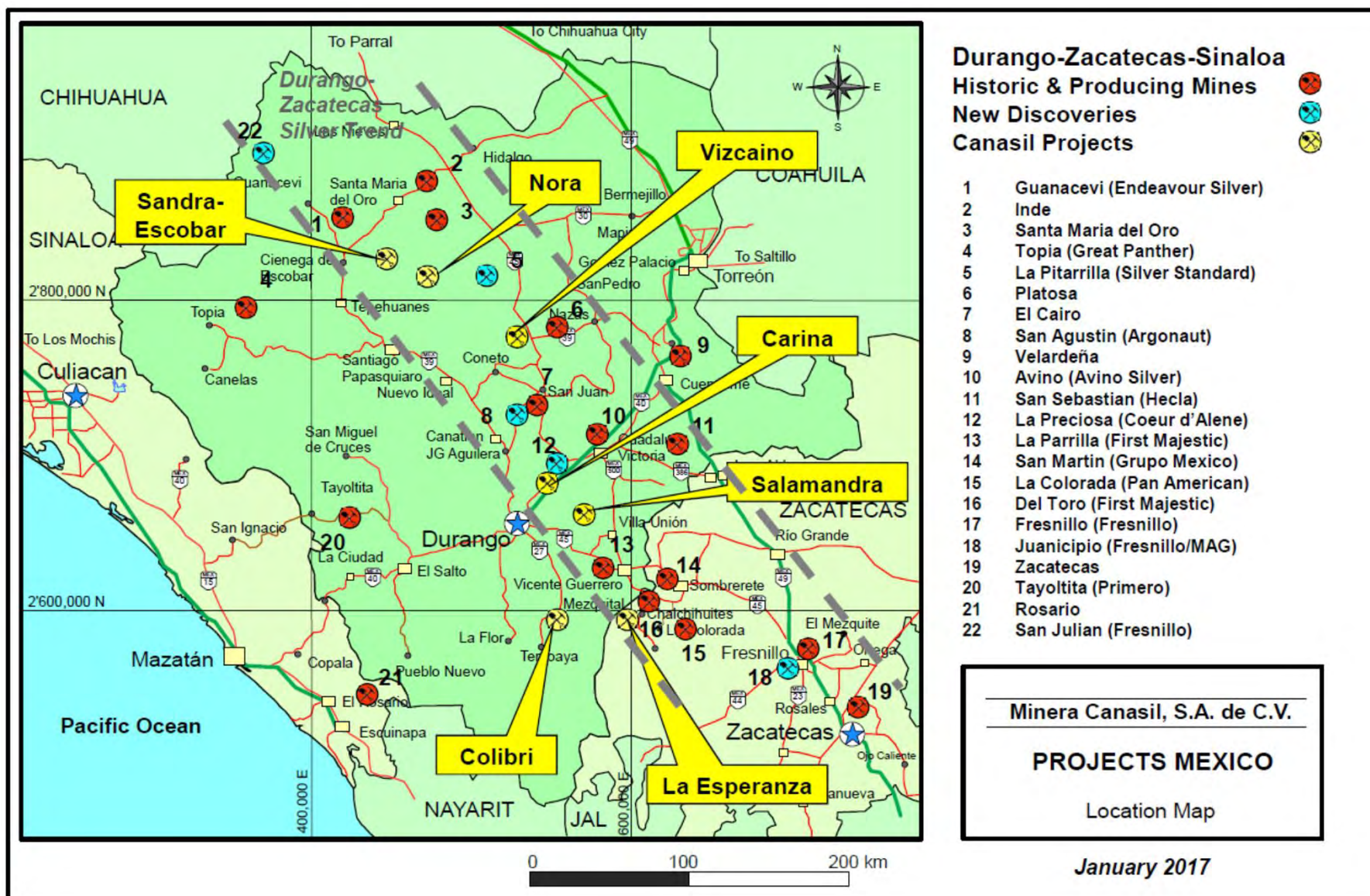
6. Vizcaino, Durango, Mexico

Gold/Silver vein - Drill targets defined for testing

7. Vega, BC, Canada

Surface showings and airborne magnetics survey define copper-gold porphyry targets

Focused Mexico Projects Portfolio on Prolific Silver Belt:



Full-time Mexico Exploration Team and Facilities in Durango City:



- ***Results driven and cost effective exploration programs***
- ***Focused generative program***
- ***Close local community relations***

Mexico exploration and administration office and core storage and processing facility located in Durango City



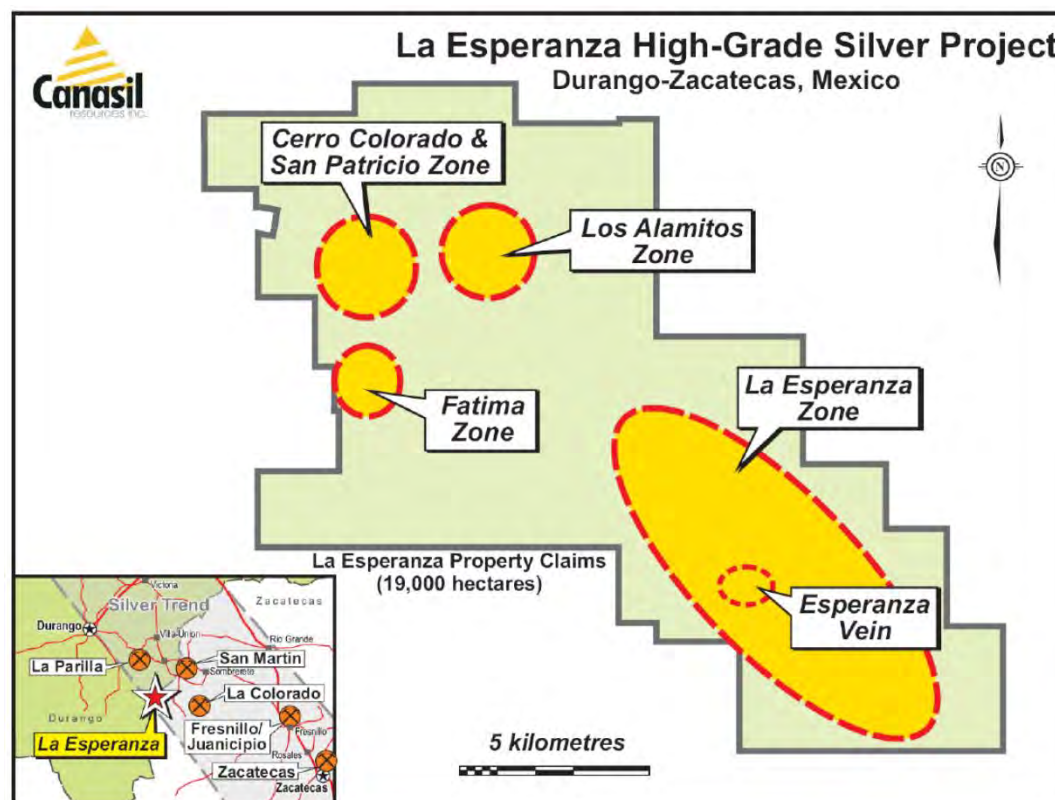
La Esperanza Silver-Zinc-Lead Project

14,916 hectares, southern Durango and northern Zacatecas States, Mexico

On major Fresnillo Silver Trend, 80km NW of Fresnillo

Close to First Majestic's La Parilla and Del Toro mines, Pan American Silver's La Colorada mine, & San Martin-Sabinas-Sombrete mining district

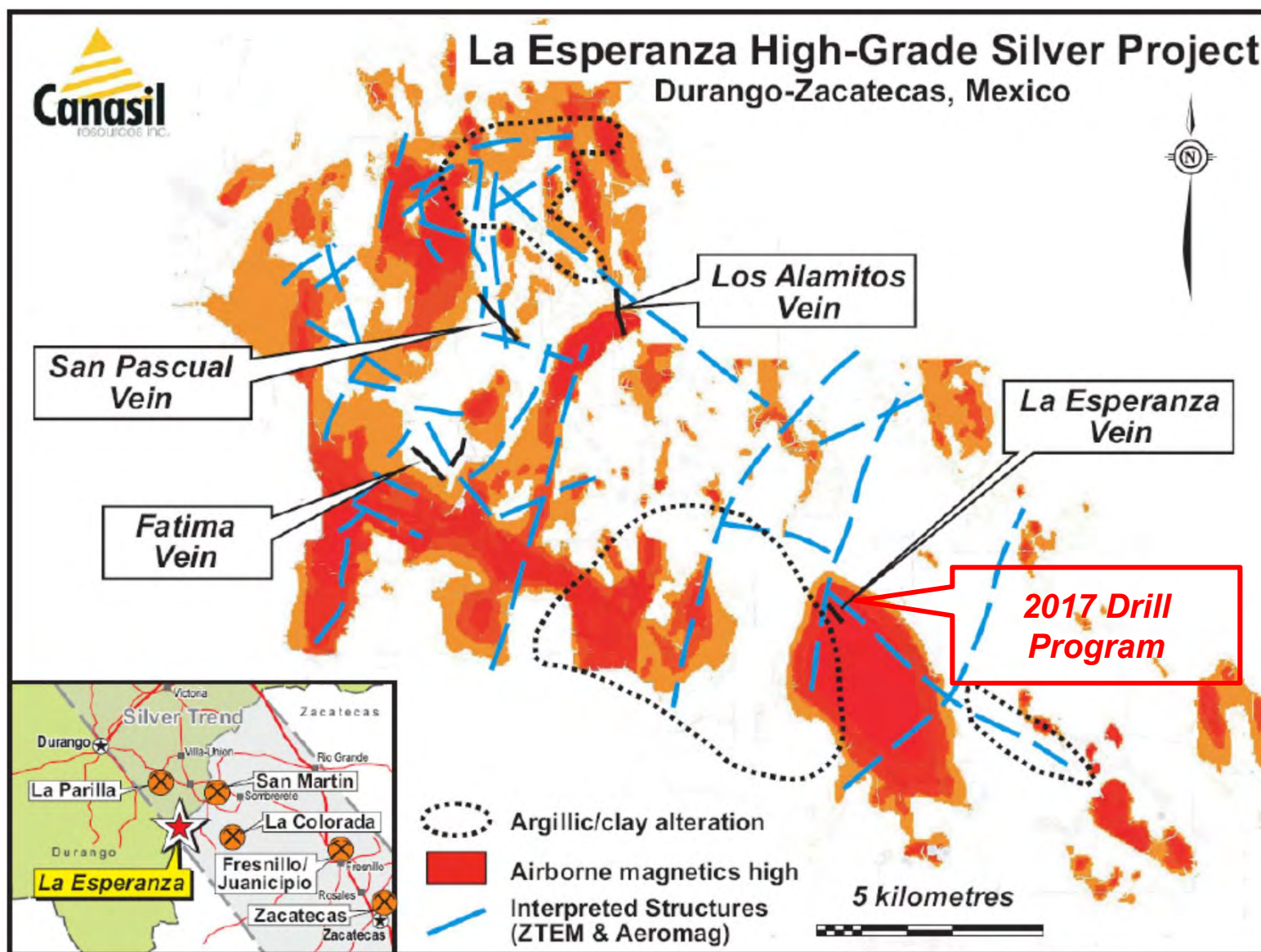
- ***Target: multiple veins and silver-zinc-lead mineralized zones***
- ***High-grade silver-zinc-lead drill intercepts from La Esperanza vein, open along strike and at depth***
- ***Potential for large district scale silver mineralized system***



La Esperanza: Located on World Class Fresnillo Silver Trend

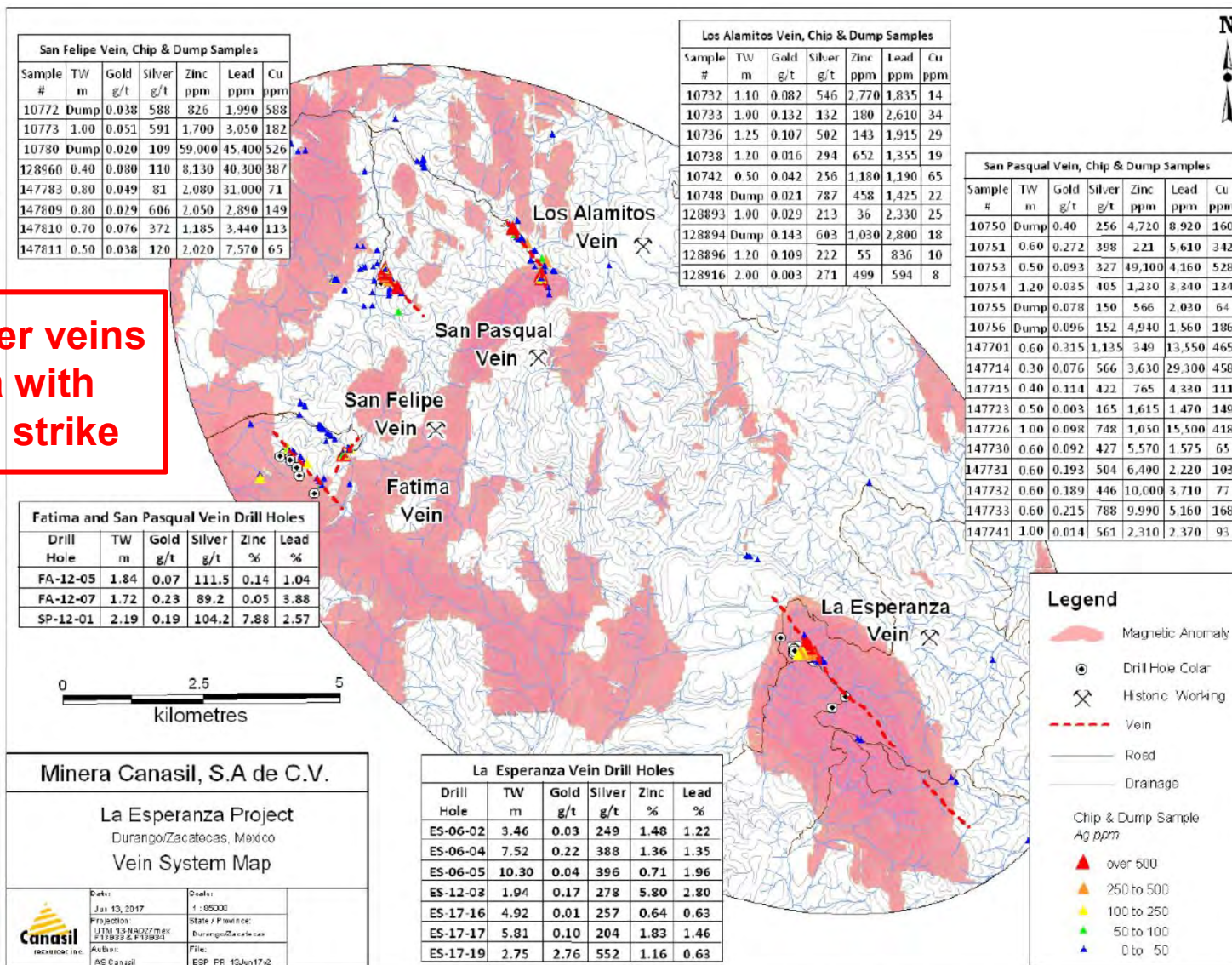


La Esperanza: Argillic Alteration & Airborne Magnetic Anomalies



La Esperanza: Multiple High-Grade Silver-Zinc-Lead Veins

**Multiple silver veins
in an area with
over 25 km strike**



Note: Selected higher-grade drill results are presented for reference on this map; complete drill results can be viewed under the La Esperanza page at www.canasil.com

La Esperanza vein – consistent high-grade silver-zinc-lead intercepts

Canasil News Release 21.09.2006

Drill Hole	From – To m	Intercept m	True Width m	Silver g/t	Zinc %	Lead %
Average	Hanging Wall Vein		1.53	324	1.37	1.80
Average	La Esperanza Vein		4.21	330	0.93	1.57
ES-06-02 LE	100.22 – 107.74	7.52	5.14	210	1.25	1.03
ES-06-03 HW	78.90 – 80.66	1.76	1.44	274	0.20	0.10
ES-06-03 LE	102.80 – 104.30	1.50	1.23	287	0.38	2.12
ES-06-04 HW	88.45- 90.80	2.35	1.79	142	2.32	1.07
ES-06-04 HW	116.83 – 127.25	10.42	7.52	388	1.36	1.35
Incl.	118.92 – 121.58	2.66	2.09	634	1.56	1.45
ES-06-05 HW	118.46 – 119.88	1.42	1.12	471	3.11	6.04
ES-06-05 LE	147.82 – 160.92	13.10	10.30	396	0.71	1.96
Incl.	148.22 – 150.15	1.93	1.52	1,360	0.38	3.40
ES-06-07 HW	152.68 – 154.65	1.97	1.65	551	0.42	1.47
ES-07-07 LE	160.02 – 162.40	2.38	1.99	272	0.34	0.24
ES-06-08 LE	183.85 – 196.40	12.55	4.69	115	1.02	1.30

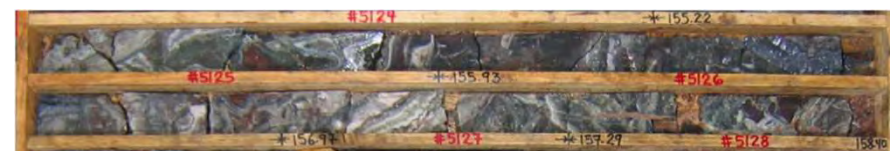
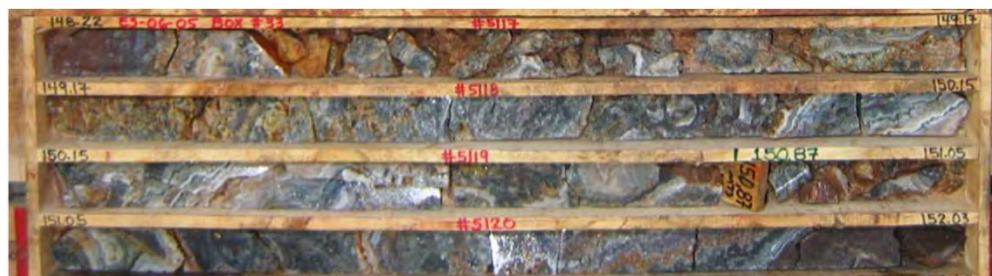
La Esperanza Project, Durango & Zacatecas, Mexico

Classic high grade Silver-Zinc-Lead banded epithermal vein textures

ES-06-05: 148.22 – 149.17m Intercept 0.95m, 2,144 g/t Silver, 3.49% Zinc + Lead

ES-06-05: 149.17 – 150.15m Intercept 0.98m, 600 g/t Silver, 4.06% Zinc + Lead

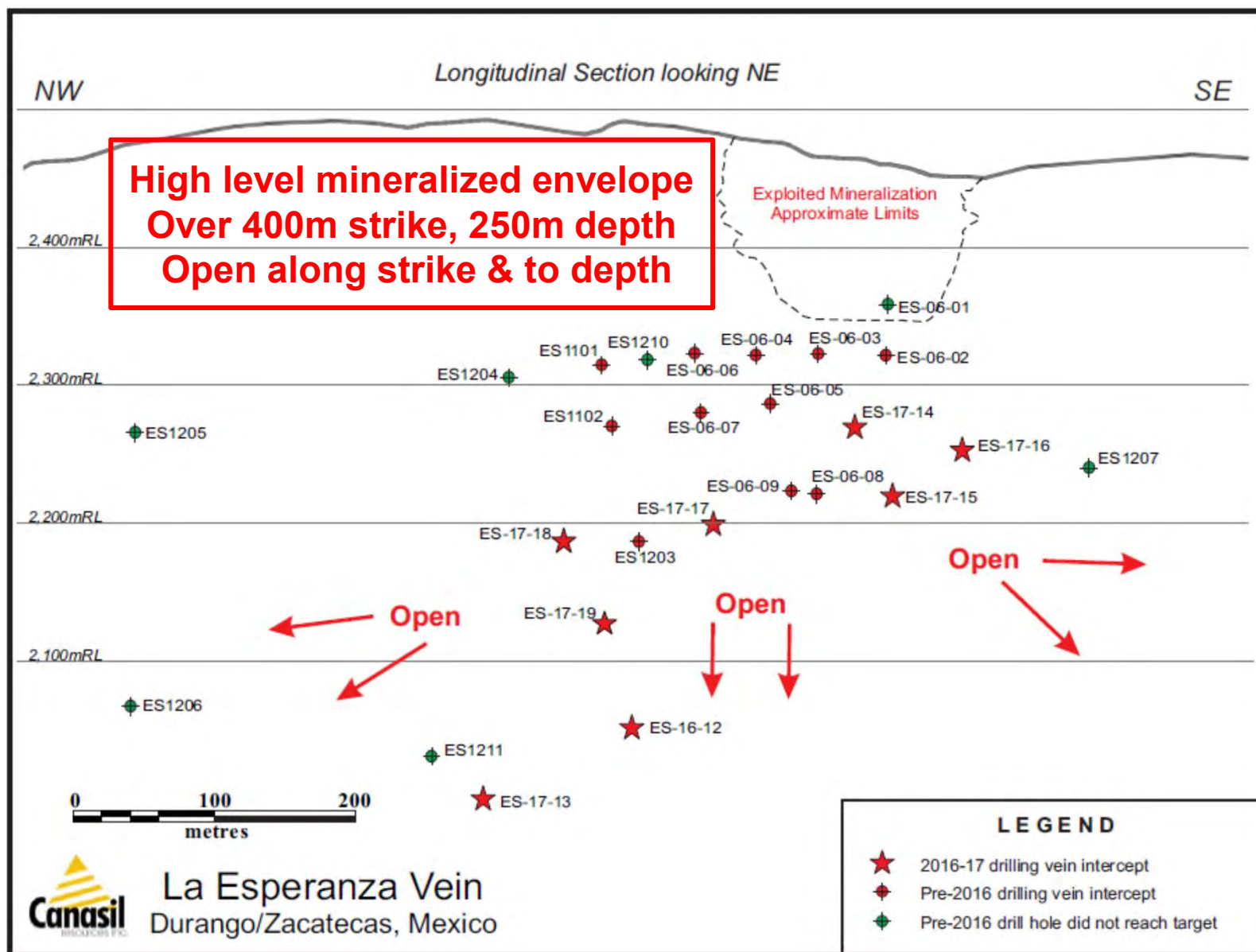
ES-06-05: 155.22 – 155.93m Intercept 0.71m, 837 g/t Silver, 21.37% Zinc + Lead



ES-12-03: 2.42m: 278g/t Ag, 8.6% Pb+Zn at 267m



La Esperanza Vein: 2016-17 Drill Program – All drill holes intersect vein



La Esperanza 2016-17 Drill Program – December 2016 to May 2017										
Hole ES-16-12										
	Fm m	To m	Int. m	TW m	Au g/t	Ag g/t	Zn %	Pb %	Cu %	Ag Eq g/t
	347.36	348.94	1.58	1.36	0.08	23.0	1.98	1.31	0.04	192
Incl.	347.36	347.83	0.47	0.41	0.08	16.5	4.81	2.89	0.02	398
And	348.47	348.94	0.47	0.41	0.16	57.9	1.74	1.45	0.11	251
	368.40	370.07	1.67	1.44	0.11	5.0	3.60	0.75	0.03	309
Incl.	369.45	370.07	0.62	0.54	0.27	8.9	9.64	2.00	0.00	584
	387.16	390.73	3.57	3.08	0.14	21.0	2.63	0.82	0.08	211
Incl.	387.16	389.87	2.71	2.34	0.17	26.0	2.17	1.07	0.09	206
Incl.	387.71	388.71	1.00	0.86	0.10	35.0	2.63	0.78	0.14	227
Incl.	387.71	388.01	0.30	0.26	0.12	38.2	3.57	1.43	0.14	308
And	388.01	388.35	0.34	0.29	0.08	51.5	3.31	0.66	0.20	278
And	389.36	389.87	0.51	0.44	0.54	33.2	4.38	3.64	0.13	469
Bit fused unable to complete hole, may not have intersected entire vein structure										
Hole ES-17-13										
	421.38	422.20	0.82	0.71	0.30	131	0.64	0.23	0.84	281
Hole lost in cavity, may not have intersected or recovered entire vein structure										
Hole ES-17-14										
HW Vn	176.30	179.50	3.20	2.13	0.01	38	0.50	0.14	0.02	70
Mn Vn	187.40	190.40	3.00	2.51	0.01	63	0.50	0.15	0.03	98
		Vein intercept close to fault, broken and soft material, low recoveries								
Hole ES-17-15										
	202.90	208.32	5.42	4.14	0.10	33	1.06	0.63	0.02	122
Incl.	202.90	204.95	2.05	1.56	0.05	51	1.90	1.38	0.03	215
Vein intercept close to fault, broken and soft material, low recoveries										
*Silver equivalents calculated assuming 100% recoveries (for Ag Eq calculation only – may not reflect actual recoveries) and Ag US\$17/oz, Au US\$1,250/oz, Cu US\$2.50/lb, Zn US\$1.30/lb, and Pb US\$1.00/lb – Announced in news Releases dated Feb. 09, Mar. 23, 2017										

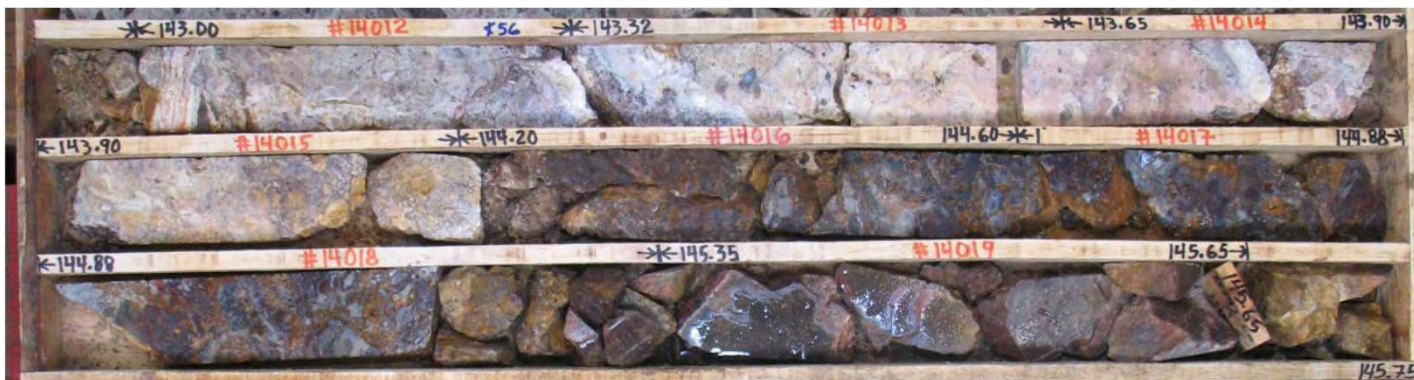
La Esperanza Vein: 2016-17 Drill Program, High-grade Silver intercepts

La Esperanza 2016-17 Drill Program – December 2016 to May 2017										
Hole ES-17-16										
	Fm m	To m	Int. m	TW m	Au g/t	Ag g/t	Zn %	Pb %	Cu %	Ag Eq g/t
	139.41	145.35	5.94	4.92	0.01	257	0.64	0.63	0.03	321
Incl.	143.00	145.35	2.35	1.95	0.03	628	0.90	1.52	0.08	750
Incl.	144.20	145.35	1.15	0.95	0.06	1,133	1.56	2.98	0.16	1,362
Hole ES-17-17										
HW 1	240.15	242.48	2.33	2.02	0.00	89	1.82	1.00	0.01	228
HW 2	248.33	248.60	0.27	0.23	0.04	236	0.28	8.43	0.06	618
HW 3	250.02	252.00	1.98	1.71	0.03	225	1.30	0.59	0.12	332
Incl.	250.02	251.21	1.19	1.03	0.03	277	2.01	0.81	0.19	438
Mn Vn	258.70	265.41	6.71	5.81	0.10	204	1.83	1.46	0.07	376
Incl.	259.25	260.60	1.35	1.17	0.03	233	0.98	1.03	0.08	338
And	261.84	262.75	0.91	0.79	0.11	347	2.98	2.20	0.02	606
And	264.51	265.41	0.90	0.78	0.10	244	3.00	2.04	0.03	498
FW Vn	272.60	272.72	0.12	0.10	0.12	30	3.61	1.84	0.04	310
Holes ES-17-18										
	257.49	265.31	7.82	6.77	0.04	79	0.68	0.53	0.03	141
Incl.	257.49	259.65	2.16	1.87	0.03	231	1.19	1.38	0.03	357
Incl.	258.98	259.65	0.67	0.58	0.04	358	0.70	1.85	0.03	479
Hole ES-17-19										
	296.44	309.41	12.97	11.23	0.74	219	0.90	0.43	0.05	382
HW Vn	296.44	298.83	2.39	2.07	0.04	261	2.09	0.92	0.15	406
Mn Vn	298.33	302.01	3.18	2.75	2.76	552	1.16	0.63	0.08	850
Incl.	300.73	302.01	1.28	1.11	6.39	1,281	2.23	1.25	0.18	1,938
FW Vn	306.88	308.62	1.74	1.51	0.39	256	1.68	0.74	0.02	406
<i>*Silver equivalents calculated assuming 100% recoveries (for Ag Eq calculation only – may not reflect actual recoveries) and Ag US\$17/oz, Au US\$1,250/oz, Cu US\$2.50/lb, Zn US\$1.30/lb, and Pb US\$1.00/lb - Announced in News Releases dated Apr. 05 and May 02, 2017</i>										

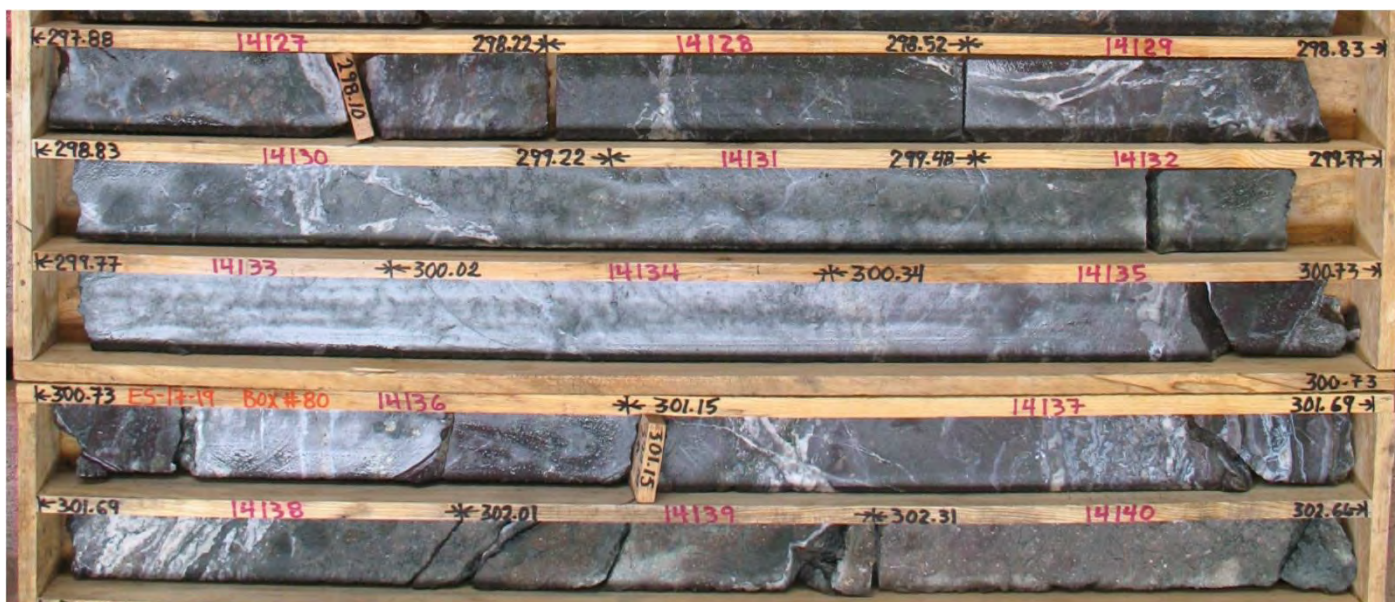
La Esperanza Vein: 2016-17 Drill Program, High-grade Core Photos

www.canasil.com

TSX-V:CLZ

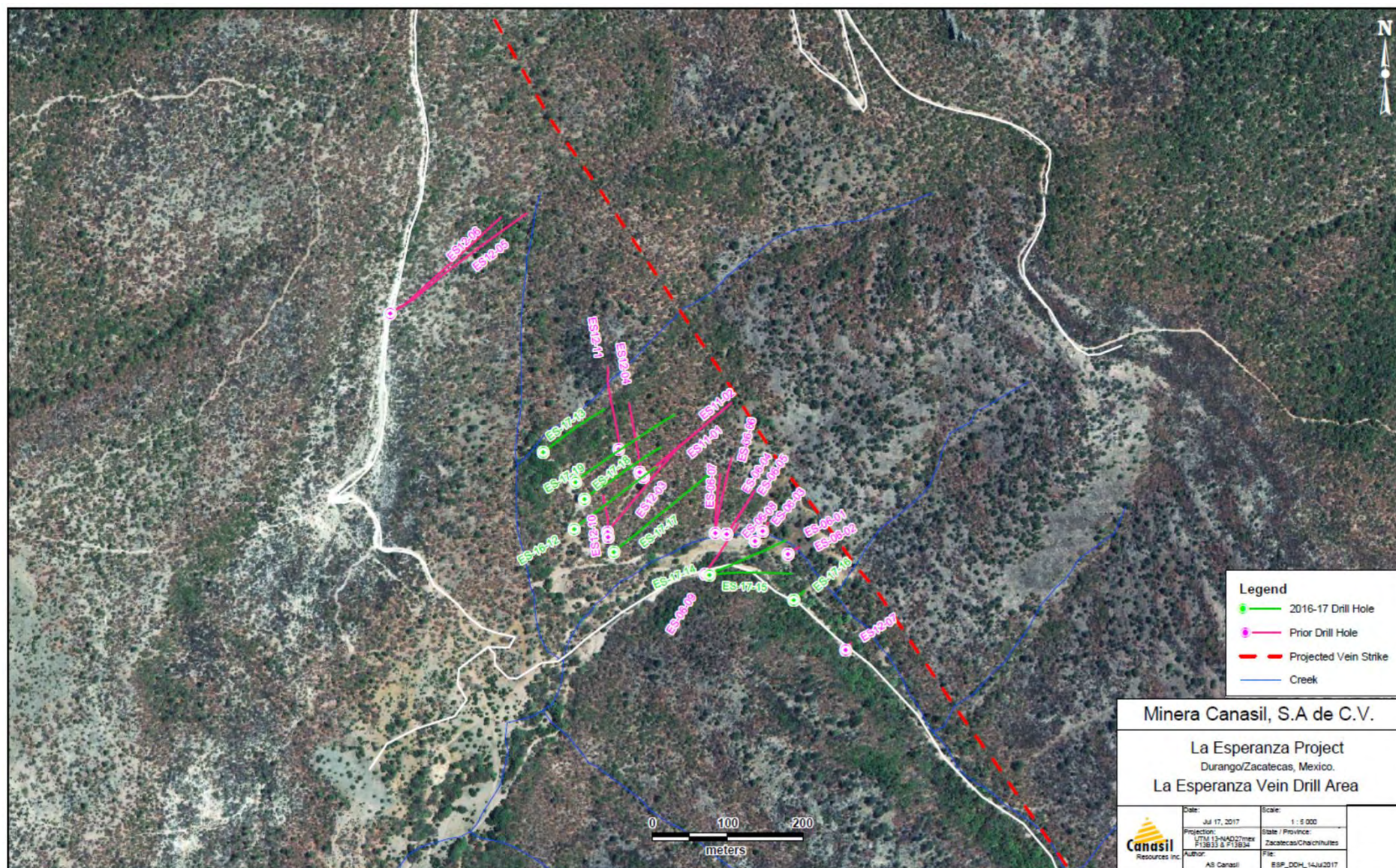


**ES-17-16: 143.00 – 145.35m, TW 1.95m 628 g/t Ag, 0.90% Zn, 1.52% Pb
Including: 144.20 – 145.35m TW 0.95m 1,133 g/t Ag, 1.56% Zn, 2.98% Pb**



**ES-17-19: 208.33 – 302.01m TW 2.75m 2.76 g/t Au, 552 g/t Ag, 1.16% Zn 0.63% Pb
Including: 300.73 – 302.01m TW 1.11m 6.39 g/t Au, 1,281 g/t Ag, 2.23% Zn, 1.25% Pb**

La Esperanza Vein: 2016-17 Drill Program, 2,452 metres in 8 Drill Holes



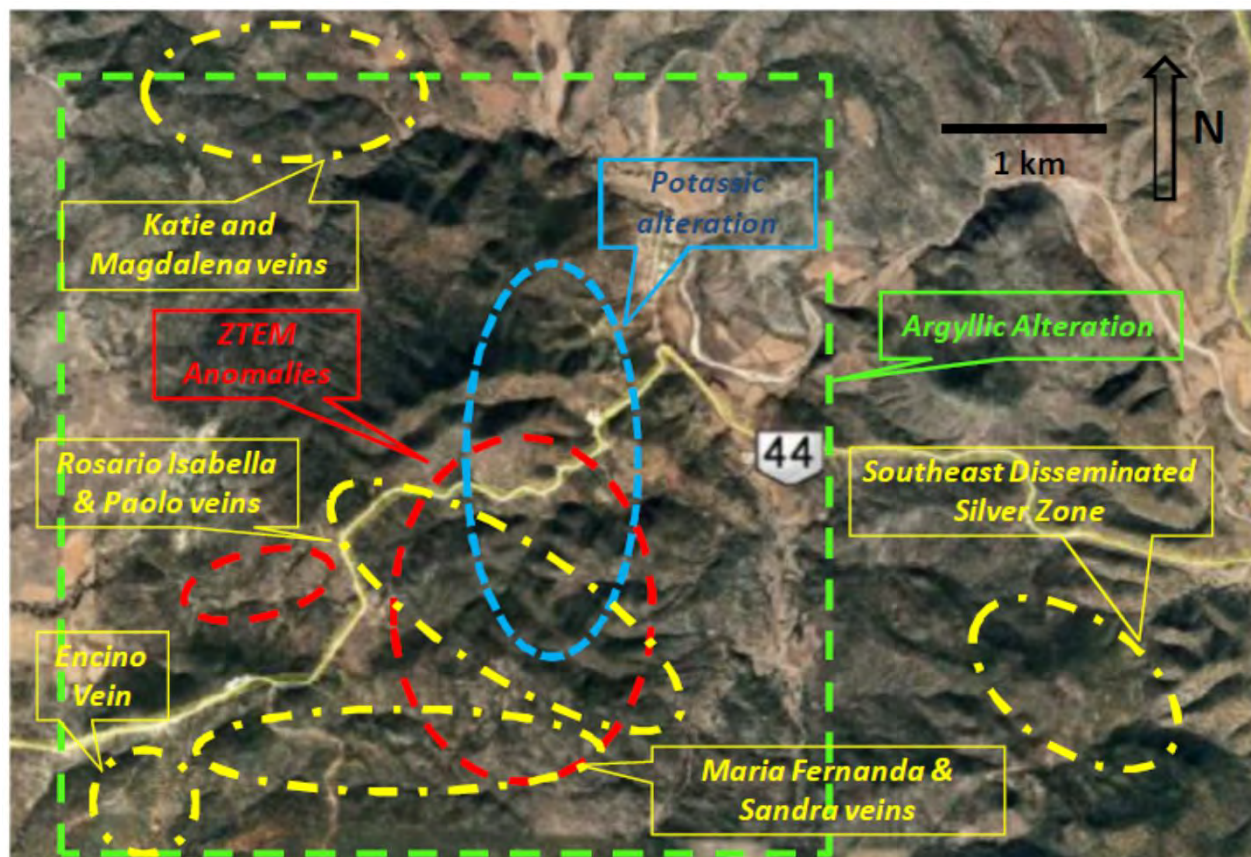
Sandra-Escobar Project, Durango, Mexico

- Option agreement with Orex Minerals to earn up to 65% interest over 5 years: \$1 million in cash/share payments and US\$4 million expenditures
- Disseminated Silver and high-grade Silver-Gold-Copper-Zinc-Lead veins
- Physical and geological features of large intrusive hosted disseminated Silver/Gold systems, similar to other deposits in Durango State

100% interest in
Canasil's Sandra claims
6.400 hectares

40% interest in Pan
American Silver's
Escobar claims 600 ha

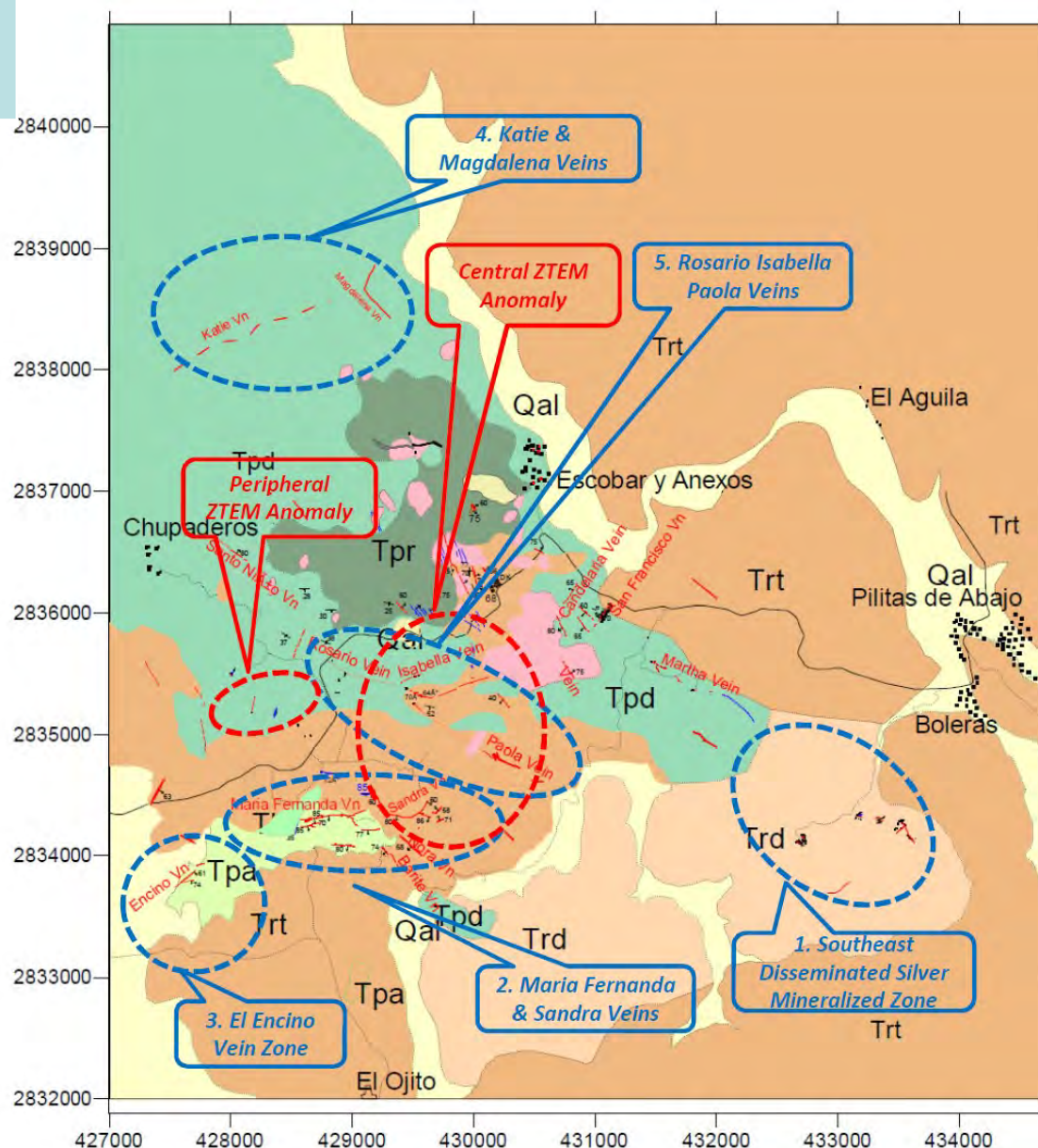
Excellent access and
infrastructure in
northern Durango State



Sandra-Escobar Project Durango, Mexico

Multiple Silver Gold Copper Zinc Lead targets – high grade veins and disseminated Silver mineralization:

1. **Southeast Disseminated Silver Zone:**
Surface samples up to: 1,465 g/t Ag
Discovery drill hole 61.00 metres
(True Thickness 43.13 metres)
of 359 g/t Silver at surface
2. **Maria Fernanda & Sandra Veins:**
SE-11-02 at 72.54 metres 0.40 m
2.58 g/t Au, 429 g/t Ag, 0.53% Cu
3. **El Encino Vein:**
SE-11-05 at 88.00 metres :
0.50 m 121 g/t Ag, 1.79% Pb, 6.52% Zn
11.67 m 18 g/t Ag, 0.29% Pb, 0.78% Zn
4. **Rosario, Isabella and Paolo Veins**
5. **Katie & Magdalena Veins:**
Surface samples up to
61.9 g/t Ag, 2.95% Pb, 1.63% Zn



Sandra-Escobar, Orex 2015-16 Drill Program

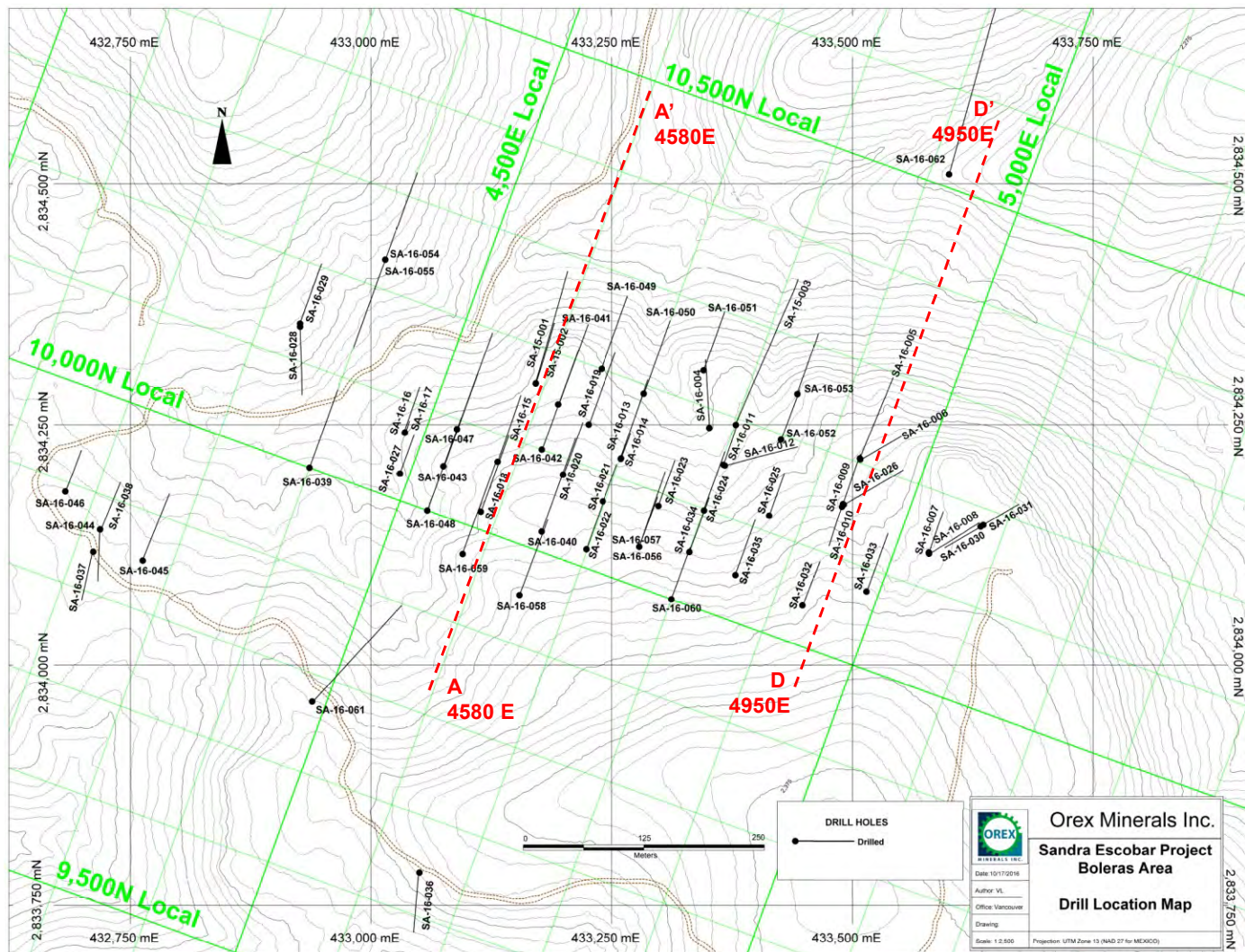
Phase 1, 2 & 3 drill programs, 62 drill holes for 8,372 metres completed

Drill area shown below - Consistent Silver Intercepts at Surface

(Canasil news Releases January to November 2016)



Sandra-Escobar, Orex 2015-16 Drill Programs 62 Drill Holes Test Mineralized Zone Along 750m Strike & Adjacent Targets



Sandra-Escobar, 2015-16 Drill Programs – Wide Near-surface Silver intercepts

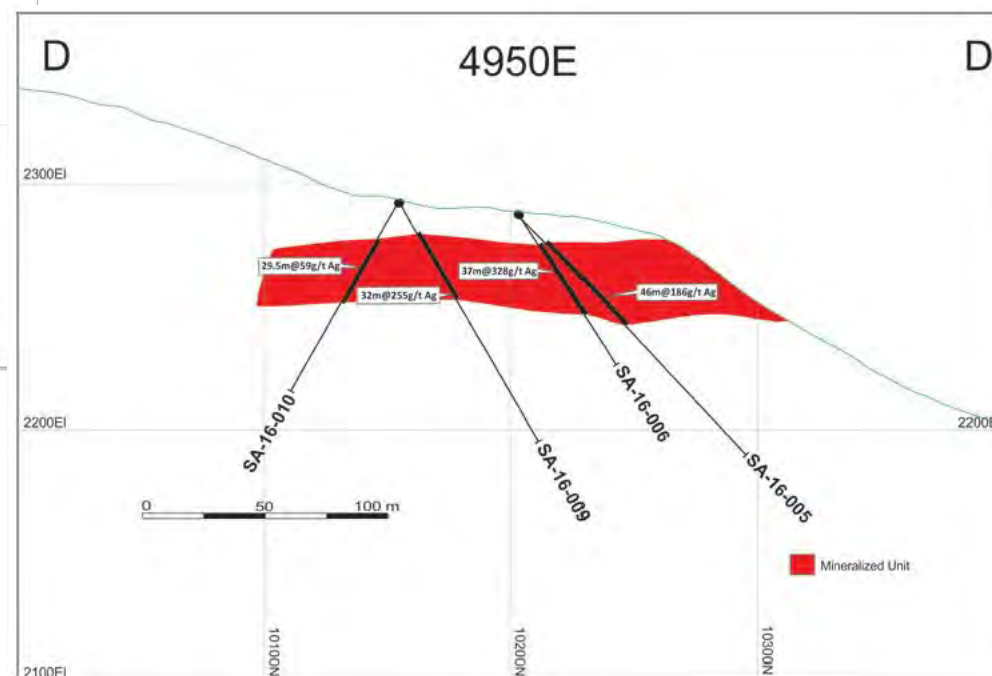
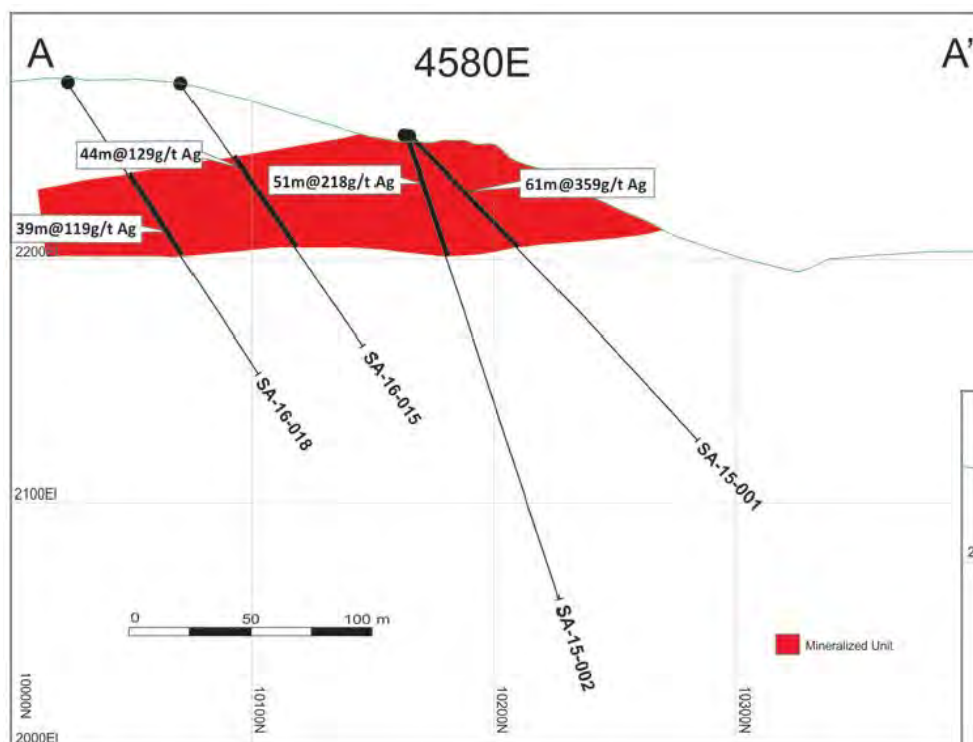
Sandra-Escobar Southeast Area Drill Hole Intercepts – 2015-2016 Phases 1 - 3 Drill Programs											
Hole	From (m)	To (m)	Core Lgth. (m)	True Thick. (m)	Ag (g/t)	Hole	From (m)	To (m)	Core Lgth. (m)	True Thick. (m)	Ag (g/t)
Main Zone											
SA-15-001	1.00	62.00	61.00	43.13	359	SA-16-019	24.00	84.00	60.00	49.15	205
SA-15-002	1.00	52.00	51.00	45.00	218	SA-16-020	46.00	113.00	67.00	63.50	88
SA-15-003	1.00	54.00	53.00	40.60	139	SA-16-021	44.50	75.00	30.50	28.50	110
SA-16-004	2.00	49.00	47.00	39.00	91	SA-16-023	44.00	90.00	46.00	40.50	218
SA-16-005	13.00	59.00	46.00	33.31	186	SA-16-024	23.00	68.00	45.00	38.50	143
SA-16-006	13.00	50.00	37.00	33.50	328	SA-16-025	37.00	57.00	20.00	19.00	133
SA-16-007	14.00	19.00	5.00	4.00	112	SA-16-040	67.00	117.00	50.00	45.32	90
SA-16-008	11.00	17.00	6.00	4.80	143	SA-16-041	2.00	69.00	67.00	58.02	192
SA-16-009	11.00	43.00	32.00	30.00	255	SA-16-042	27.00	83.00	56.00	48.50	129
SA-16-011	9.00	61.00	52.00	48.00	74	SA-16-047	8.00	66.00	58.00	46.00	113
SA-16-012	8.00	49.00	41.00	28.99	89	SA-16-048	22.00	87.00	65.00	56.00	114
SA-16-013	43.00	102.00	59.00	41.72	93	SA-16-049	1.00	42.00	41.00	35.00	106
SA-16-015	32.00	76.00	44.00	36.04	129	SA-16-050	2.00	59.00	57.00	46.00	118
SA-16-016	11.50	41.00	29.50	22.60	97	SA-16-051	0.70	36.00	35.30	31.00	88
SA-16-018	50.00	89.00	39.00	31.95	119	SA-16-057	62.00	103.00	41.00	33.58	108

Details reported In Canasil News Release January to November 2016

Sandra-Escobar, 2015-16 Drill Programs - High-grade Silver intercepts

Sandra-Escobar Southeast Area 2015-16 Drill Programs: High-grade Silver Intercepts											
Hole	From (m)	To (m)	Core Lgth. (m)	True Thick. (m)	Ag (g/t)	Hole	From (m)	To (m)	Core Lgth. (m)	True Thick. (m)	Ag (g/t)
Main Zone											
SA-15-001	6.00	24.00	18.00	12.73	748	SA-16-019	42.70	74.00	31.30	25.64	284
Incl.	14.00	23.00	9.00	6.36	1,204	Incl.	59.00	74.00	15.00	12.29	375
Incl.	20.00	23.00	3.00	2.12	2,271	Incl.	60.00	61.00	1.00	0.82	1,550
SA-16-002	29.00	46.00	17.00	15.00	404	SA-16-023	52.00	86.00	34.00	29.93	270
Incl.	44.00	45.00	1.00	0.88	1,074	Incl.	55.00	59.00	4.00	3.52	820
SA-16-003	43.00	48.00	5.00	3.83	325	Incl.	56.00	57.00	1.00	0.87	1,966
Incl.	44.00	45.00	1.00	0.77	957	SA-16-024	32.00	35.00	3.00	2.57	384
SA-16-005	39.00	54.00	15.00	10.86	374	Incl.	33.00	34.00	1.00	0.86	719
Incl.	50.00	51.00	1.00	0.72	1,052	SA-16-025	39.00	47.00	8.00	7.60	247
SA-16-006	24.00	48.00	24.00	21.73	453	Incl.	45.00	47.00	2.00	1.90	503
Incl.	34.00	48.00	14.00	12.68	598	SA-16-040	83.00	84.00	1.00	0.91	373
Incl.	42.70	45.75	3.05	2.75	1,365	SA-16-041	23.00	56.00	33.00	28.58	279
SA-16-008	13.00	14.00	1.00	0.80	320	Incl.	23.00	32.00	9.00	7.79	449
SA-16-009	22.00	42.00	20.00	18.75	377	Incl.	23.00	25.00	2.00	1.73	1,216
Incl.	27.00	36.00	9.00	8.44	673	SA-16-042	67.00	77.00	10.00	8.66	299
Incl.	30.00	31.00	1.00	0.94	1,273	Incl.	68.00	69.00	1.00	0.87	680
SA-16-015	67.00	72.00	5.00	4.10	252	SA-16-049	17.00	18.00	1.00	0.85	283
Incl.	70.00	72.00	2.00	1.64	329	SA-16-051	8.00	9.00	1.00	0.98	317
SA-16-018	61.00	62.00	1.00	0.82	285	SA-16-057	71.00	74.00	3.00	2.46	394

Sandra-Escobar, Orex 2015–16 Phase 1 & 2 Drill Programs
Cross Sections 4580E & 4950E: Consistent Mineralized Zone Along 550m Strike



Sandra-Escobar, Ores 2015 -16 Drill Program Initial Resource Estimate and Metallurgical Testing

Bolaras Silver Deposit – Inferred Resource Estimate by Cut-Off Grade					
Cut-off Grade	Tonnes	Grade	Grade	Silver	Silver
Ag (g/t)		Ag (g/t)	Ag (oz/t)	(M-g)	(oz)
15	12,100,000	92	3.0	1,120	35,800,000
30	11,500,000	96	3.0	1,100	35,400,000
45	9,800,000	106	3.4	1,040	33,300,000
60	8,000,000	118	3.8	950	30,400,000
75	6,400,000	131	4.2	840	26,900,000
90	5,000,000	145	4.7	720	23,100,000

*Note: Mineral Resources are not Mineral Reserves and do not have demonstrated economic viability.
The Mineral Resource was estimated by Mining Plus Consultants with an Effective Date of October 25, 2016.*

Table 1. – Bolaras Deposit Main Zone – Metallurgy – HCl Pre-treatment

Preliminary HCl Leach Results		
Sample	Head Grade - Ag (g/t)	Recovery – Ag (%) – KR
1 #SE	54	6.1
2 #SE	98	14.5
3 #SE	143	26.8
4 #SE	192	29.4
5 #SE	361	63.3
6 #SE	1812	93.0

*Metallurgical tests were conducted by Kemetco Research Inc. under the guidance of Blue Coat Metallurgy
Details reported In Canasil News Releases dated October 31 and December 15, 2016*

Salamandra Silver-Zinc-Copper Project, Durango, Mexico

14,760 hectares, 35km NE Durango City, excellent access and infrastructure

Large Silver-Zinc-Copper mineralized system

Satellite surveys, aerial ZTEM & 3D-IP geophysics, and surface sampling

17,980 metres core drilling in 35 drill holes

Similar geology to San Martin-Sabinas, located 80km southeast on trend





***Extensive Surface Sampling
Geological Mapping
High-grade surface samples:***

9818: Dump:

99.7 g/t Ag, 1.26% Cu, 0.94% Zn

***9819: Vein: 0.90m 2,150 g/t Ag,
5.39% Cu, 1.89% Zn***

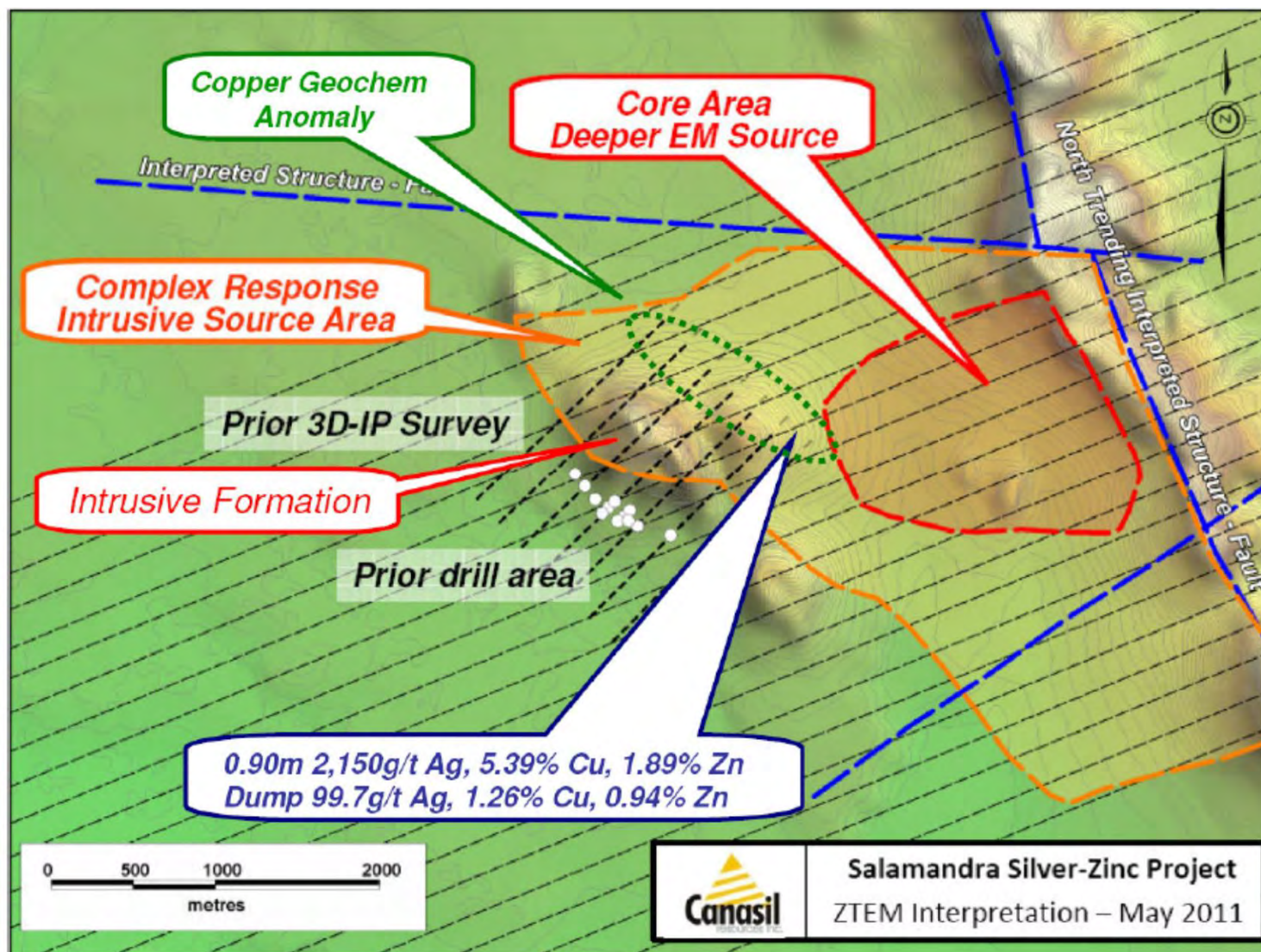
(Canasil News Release Nov. 5, 2012)

Salamandra Silver-Zinc-Copper Project

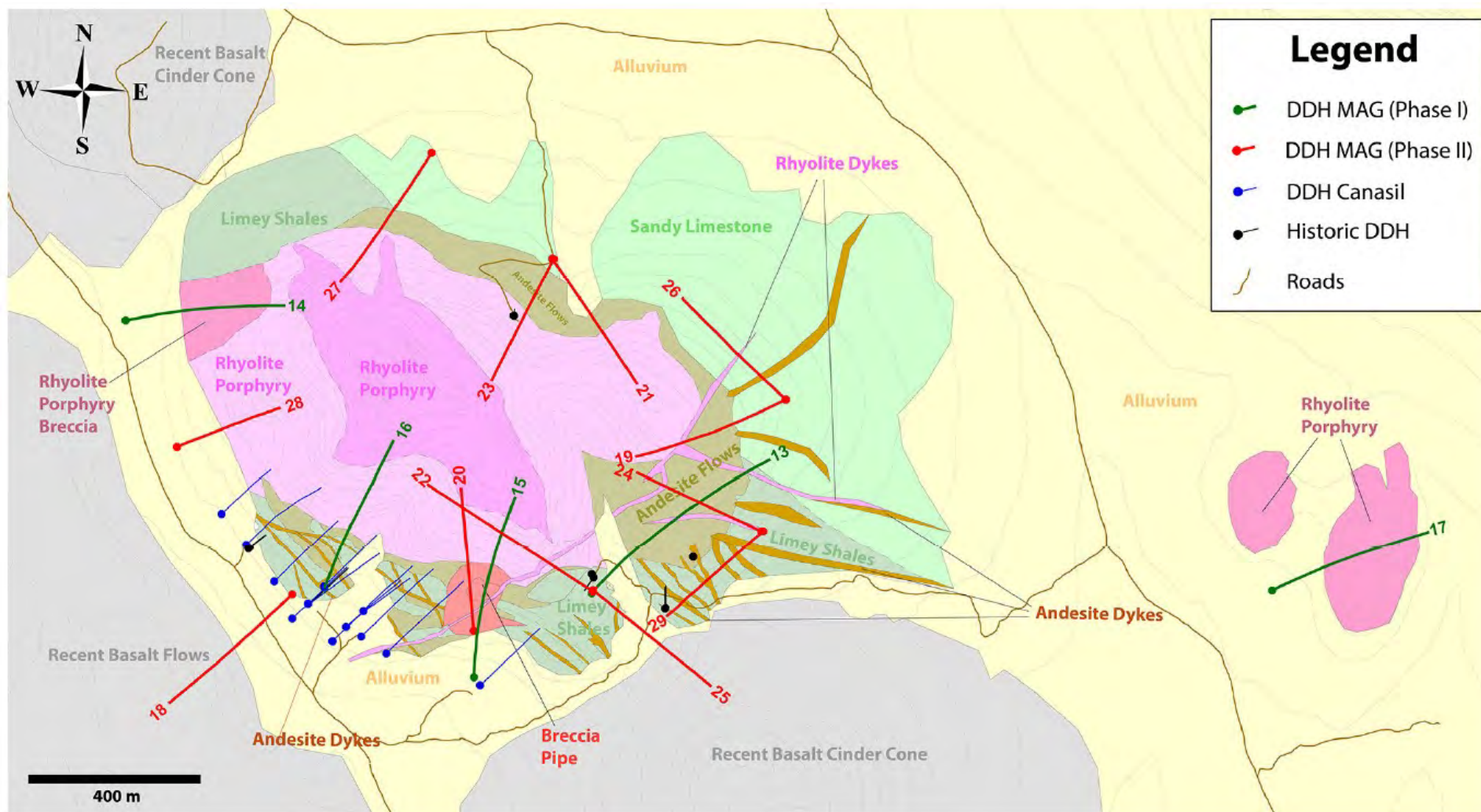
***ZTEM Airborne Survey
Satellite Imaging and High
Resolution Mapping Surveys***



Salamandra Silver-Zinc-Copper Project Systematic exploration; Potential for Large Mineralized System



Salamandra Project, Durango, Mexico - Drill Intercepts Indicate Potential for Extensive Silver-Zinc-Copper Mineralized System



Salamandra Project, Durango, Mexico – Selected Drill Intercepts						
Drill Hole	Intercept From – To: m	Width m	Silver g/t	Zinc %	Copper %	Lead %
SA-07-02	7.40 – 17.25	9.85	102	0.55	0.02	0.03
SA-07-02	27.65 – 35.10	7.45	50	12.00	0.22	0.06
SA-07-03	195.00 – 205.00	10.00	71	3.48	0.06	1.26
SA-07-06	3.40 – 15.00	11.60	13	4.05	0.20	0.03
SA-07-08	261.00 – 271.00	10.00	29	3.51	0.04	0.42
SA-07-10	230.00 – 234.35	4.35	5	5.51	0.02	0.05
SA-13-13	20.65 – 830.81	810.16	2	0.6	0	0
SA-13-13	637.50 - 669.72	31.72	1	3.6	0.1	0
SA 14-14	165.99 – 182.88	16.89	29	1.8	0	0.2
SA 14-14	182.40 – 182.88	0.48	197	1.1	0.4	0.6
SA 14-14	186.38 – 186.80	0.42	108	0.6	0.5	1.4

Details reported in Canasil News Releases dated 18.07.2007 and 17.03.2014

Canasil Resources Inc. - Creating Value Through Discovery

Salamandra Project, Durango, Mexico – Selected Drill Intercepts						
Drill Hole	Intercept From – To: m	Width m	Silver g/t	Zinc %	Copper %	Lead %
SA 14-15	605.74 - 613.13	7.89	166	1.2	1.2	0.6
SA 14-15	607.50 – 609.80	2.30	393	2.8	3.6	0.4
SA 14-19	128.87 – 130.22	1.35	59	0.9	0	1.1
SA 14-19	349.87 – 388.36	37.99	1	1.6	0.02	0
SA 14-25	113.00 – 143.51	30.51	25	0.8	0.02	0.4
SA 14-25	121.36 – 126.73	5.37	41	1.7	0.02	0.7
SA 14-25	138.58 – 143.51	4.93	77	1.9	0.03	1.3
SA 14-27	358.40 – 366.00	7.60	2	2.2	0.03	0.2
SA 14-27	358.40 – 360.68	2.28	5	3.5	0.04	0.2
SA 14-27	364.12 – 366.00	1.88	2	4.4	0.05	0.4
SA 14-28	19.90 – 3193.36	173.46	4	1.0	0.01	0.1

Details reported in Canasil News Releases dated 17.03.2014 and 21.07.2014

Canasil Resources Inc. - Creating Value Through Discovery

Carina Silver-Gold Project, Durango State, Mexico

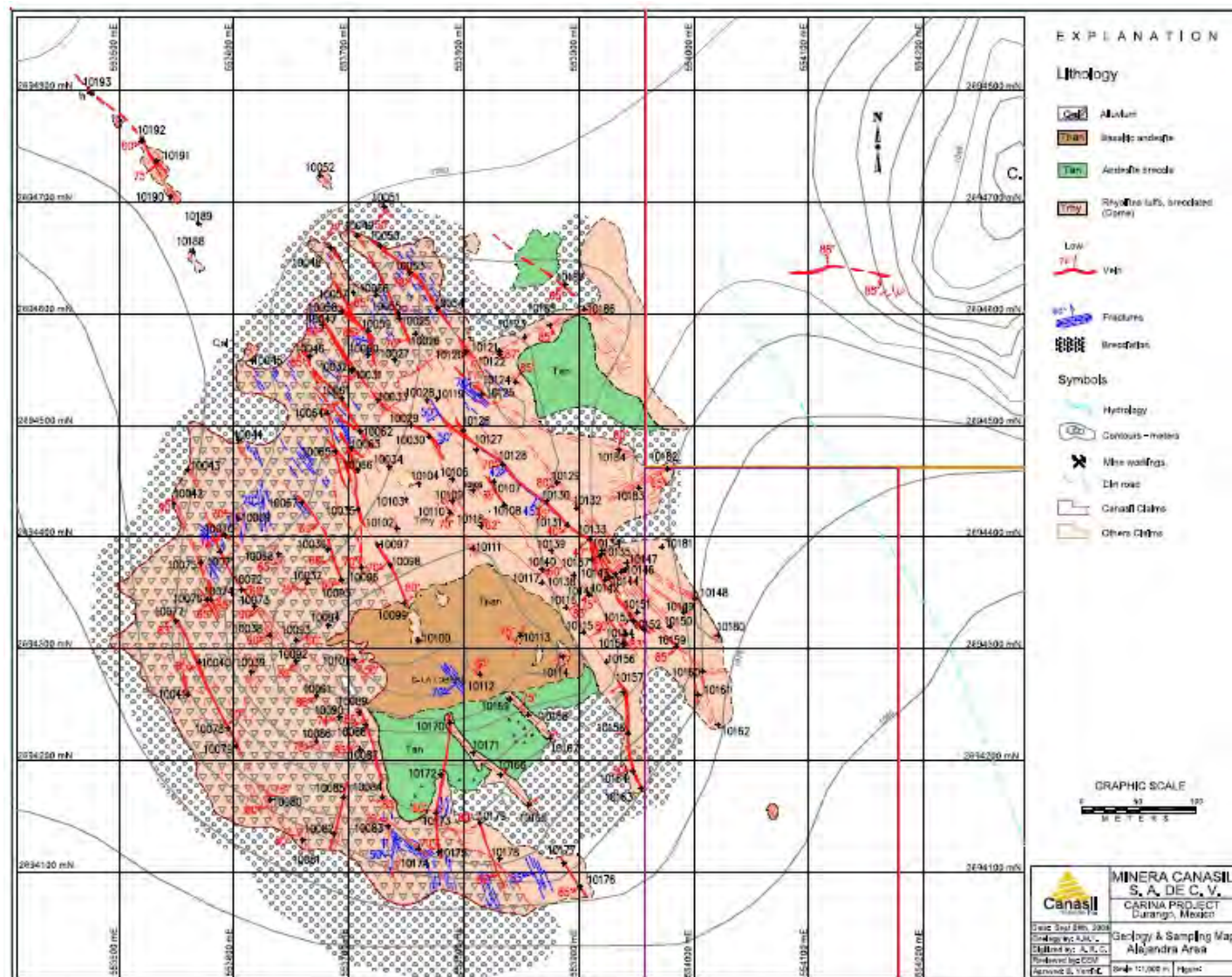
**7,107 ha located
45km NE of Durango**

***Adjacent to Coeur
d'Alene Mines
La Preciosa Deposit***

Multiple NW-SE trending veins with quartz stockwork over 700m x 500m

Anomalous Au & Ag
100-700 ppb Au
10-100 g/t Ag

Potential for large Disseminated Au/Ag system



Vizcaino Silver-Gold Project, Durango State, Mexico

- ***3,400 ha located 127 km N of Durango***
- ***Epithermal quartz vein outcrop on hillside up to 12 m in width***
- ***Anomalous gold values
32 to 141 ppb Au in 20 samples
over 1,000 m strike distance***
- ***2,300 m to 2,350 m elevation***



- ***Vein traced down across fields
over strike distance of 2,500 m***
- ***161 to 667 ppb Au in 9 samples
over 400 m strike distance***
- ***2,250 m elevation***
- ***Increasing Gold grades with depth***

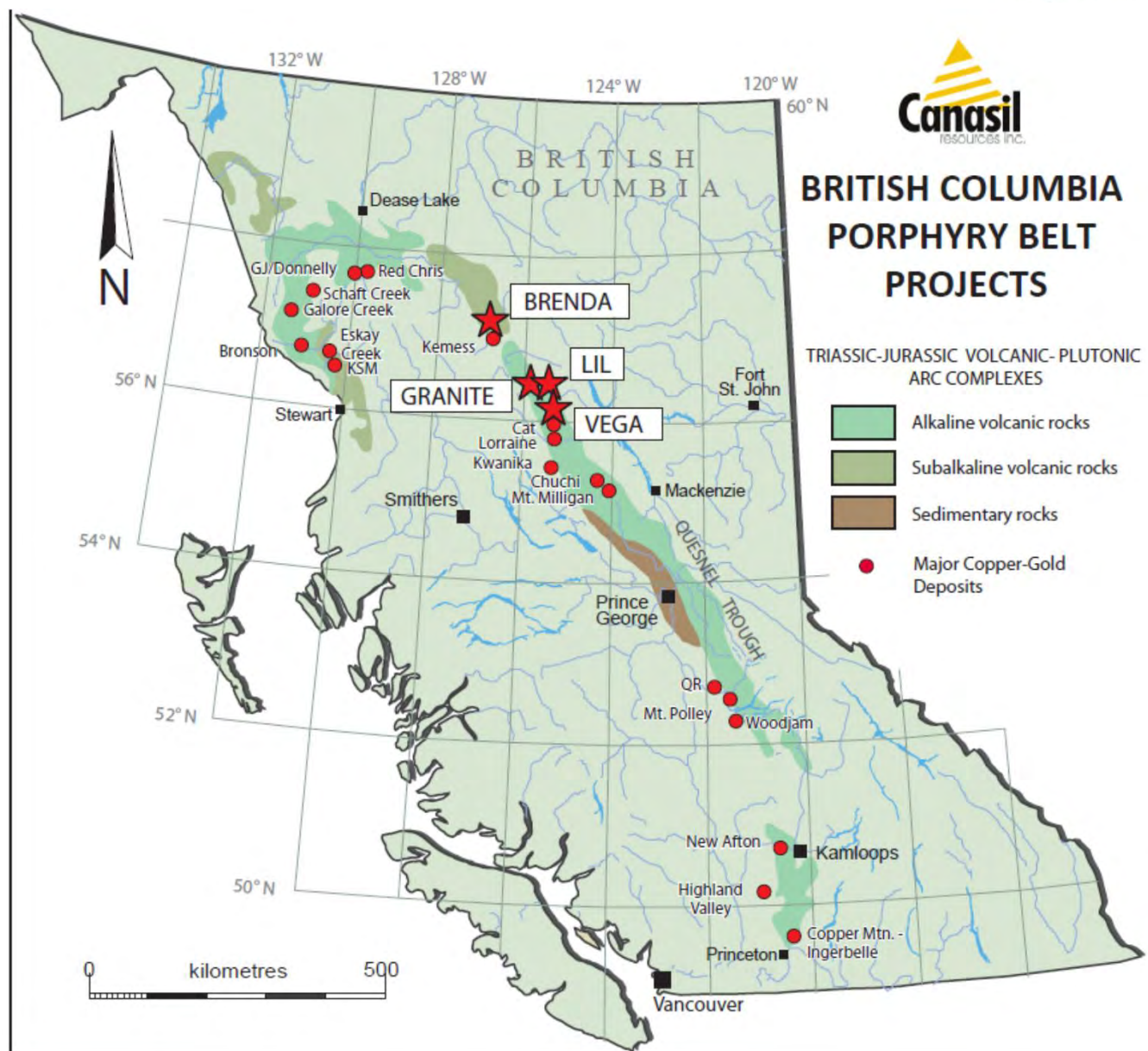
BC Projects Spin-off - factors driving interest in BC projects:

- **Located on recognized trend in north central BC hosting major mines and deposits**
- **Interest by majors in large copper-gold exploration projects**
- **Multiple copper-gold porphyry targets on Brenda and Vega projects**
- **Increasing copper and gold prices**
- **Significant interest and activity on BC exploration projects**
- **Brenda project 15 km NW of Aurico Metals Kemess North and East deposits: Feasibility March 2016, Environmental Assessment approved March 2017**
- **Brenda adjacent to AMARC Joy project – optioned to Hudbay Minerals to earn 50% interest for \$20 Million expenditures**

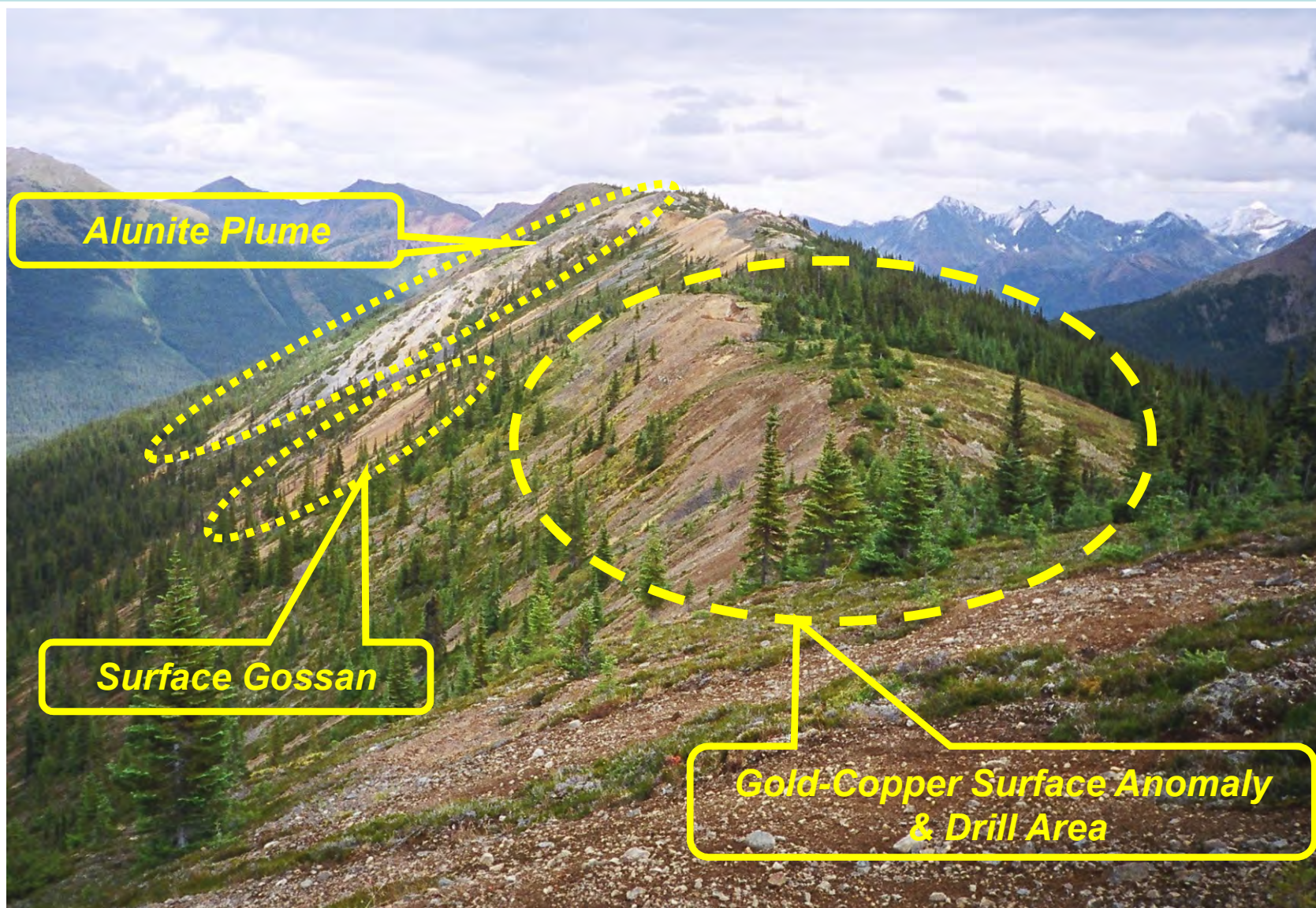
Canasil BC Projects North-central BC

Brenda – 44.50 Sq Km
Au-Cu Porphyry
20 km NW of Kemess
Excellent Access and Infrastructure
Advanced Exploration
Multiple Porphyry Targets

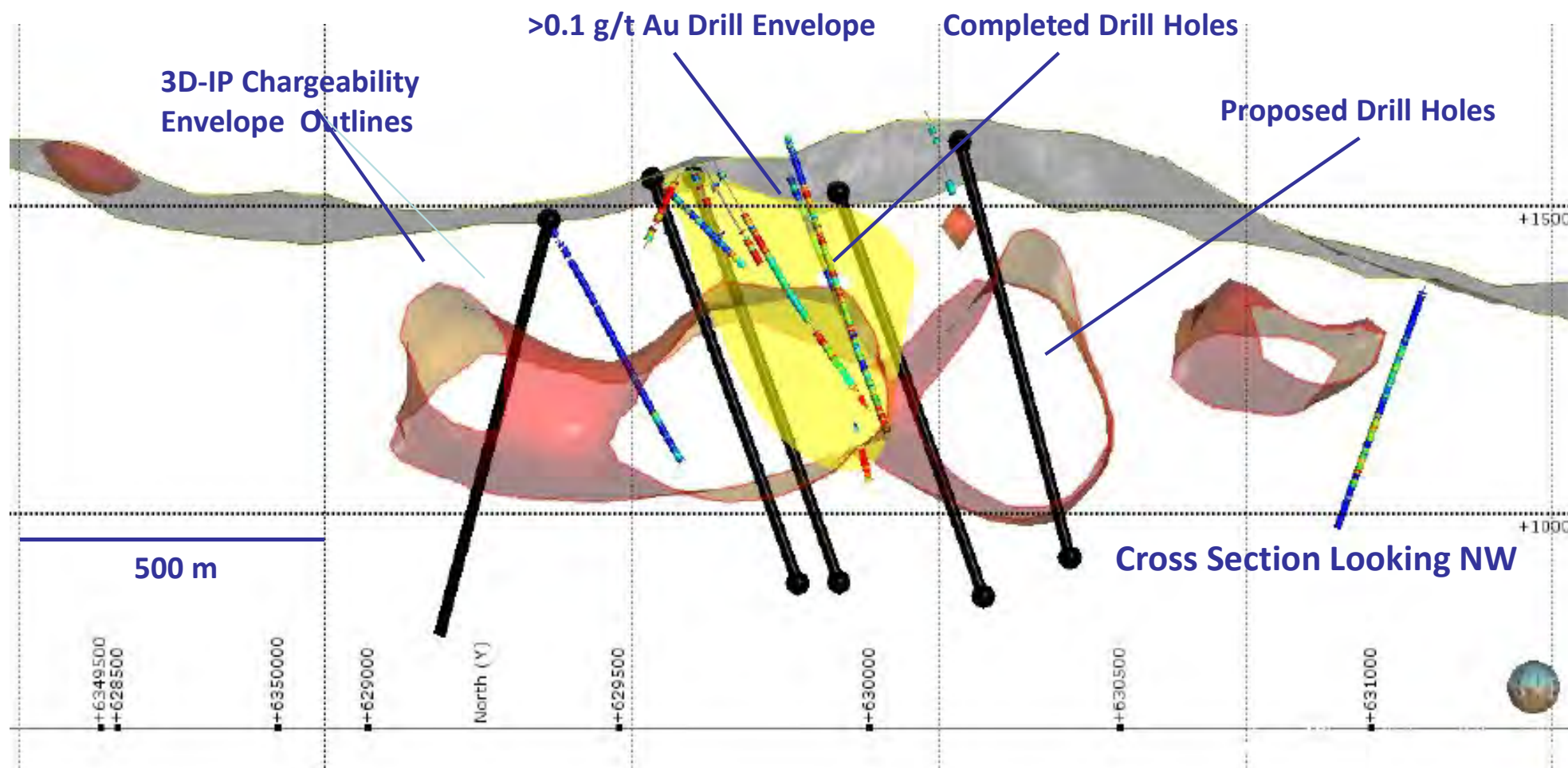
Vega – 90.00 Sq km
Cu-Au Porphyry
Good Access and Infrastructure
Early Exploration
Multiple Cu-Au Targets



Brenda Project: surface signature of porphyry gold-copper systems

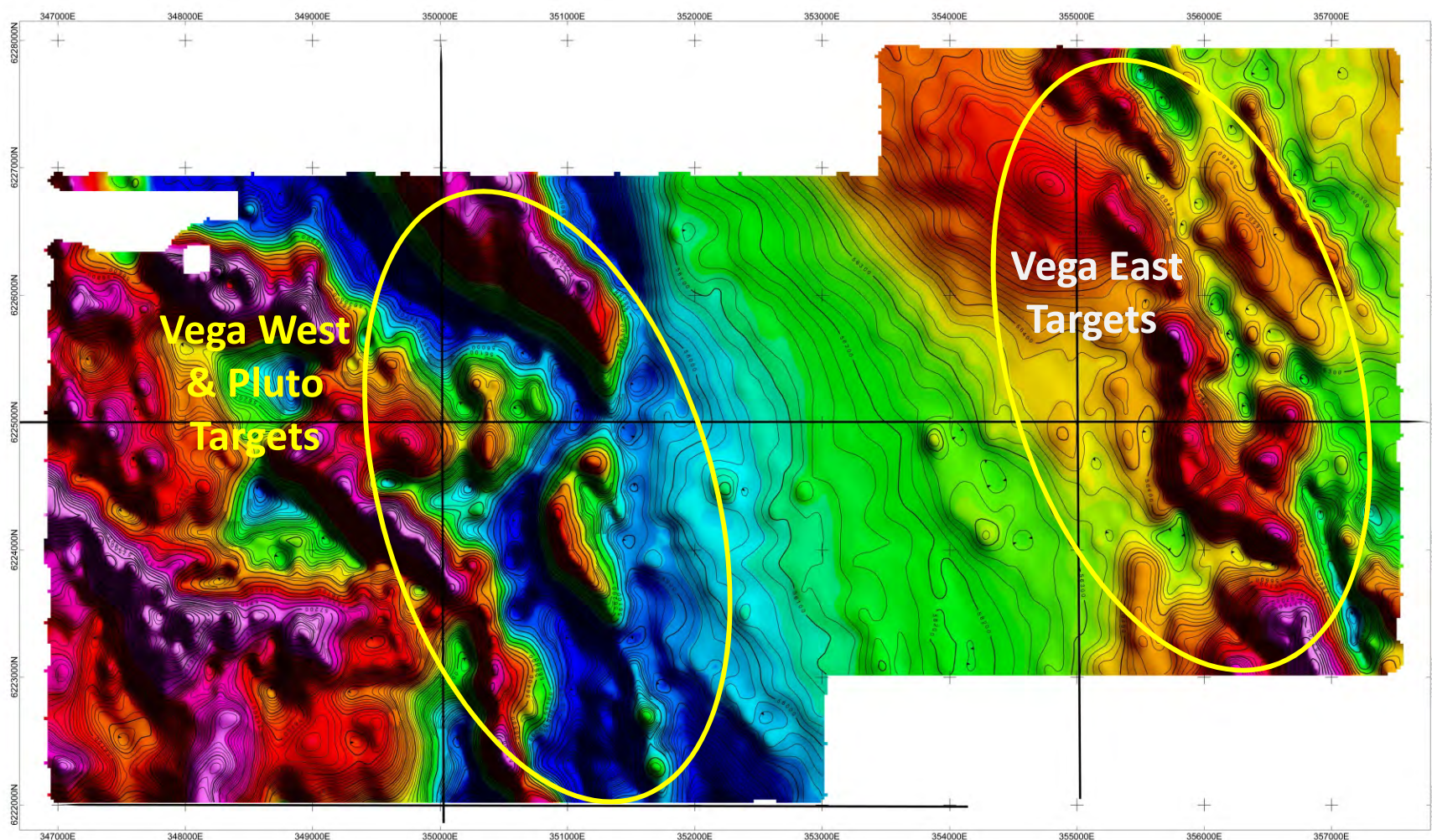


Drill Targets Defined with Proposed Exploration Program Includes Airborne Geophysics and Drilling



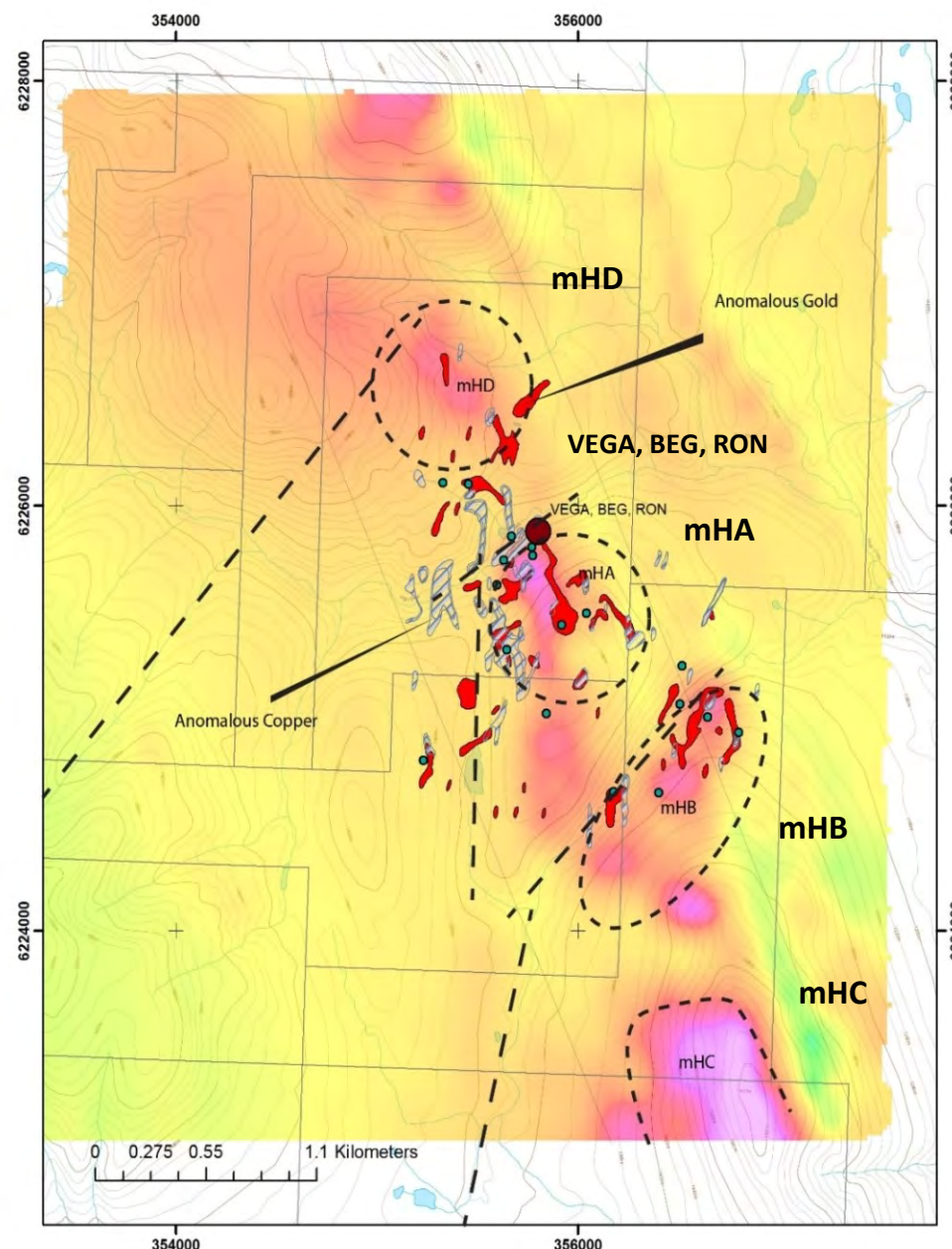
2016 Vega Aerial Magnetic Survey - Total Magnetic Intensity Map

- Structures and Possible Intrusion-related Anomalies stand out on Vega East and West
 - Potential for multiple copper-gold porphyry targets



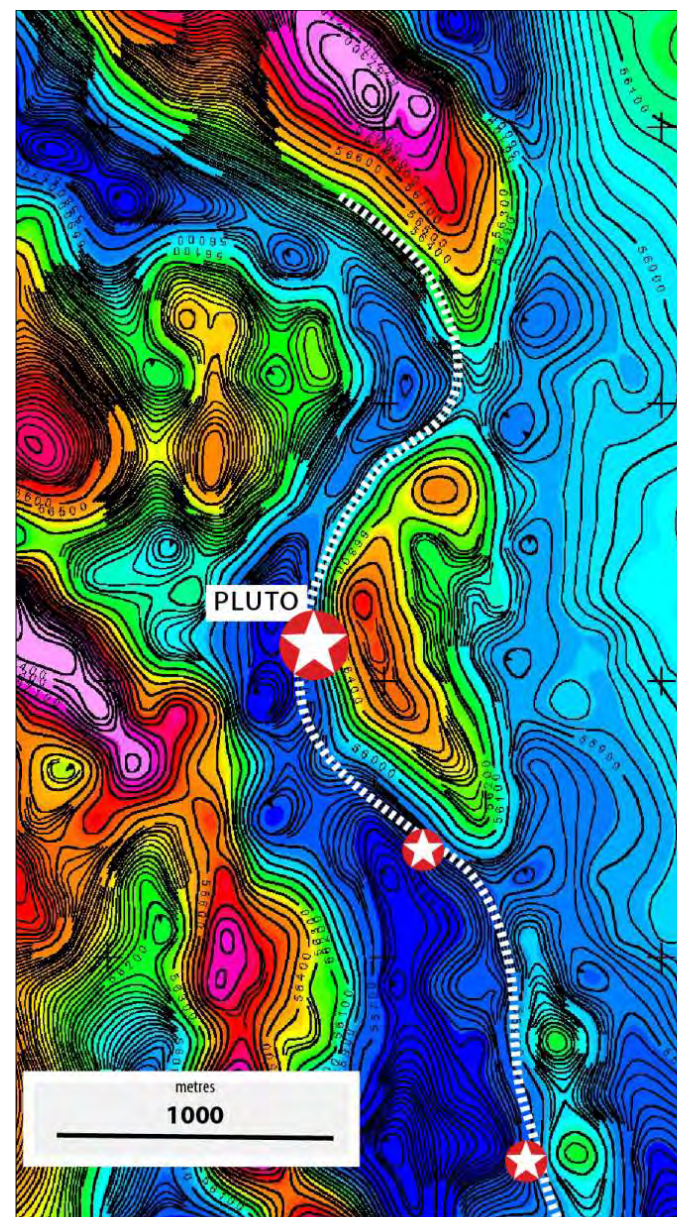
Vega East: 2016 Aeromag Anomalies Coincident with Au-Cu Geochem Outline Multiple Targets

- **mHA:** Immediately south of original Vega Minfile surface geochem occurrence
- **mHB:** 1 km SE of MHA, associated with elevated gold soil geochemistry, on flank of topographic high and IP anomaly
- **mHC:** Situated in the southwestern corner of the survey block, remains open, only historical coverage is a geochemical response over this feature
- **mHD:** Immediately north of the Vega showing, exhibits weaker copper and gold geochemical response as well as weaker magnetic response – possible deeper source
- Other magnetic features within the area, only limited historic information, appear to be located to the east of the main corridor.



Vega West – Pluto Showing

- Pluto showing is located in the centre of a NW-SE corridor outlined by airborne Mag survey
- Airborne Mag survey shows strong magnetic features, possibly related to intrusive units
- A well defined magnetic break links Pluto to three other surface showings
- Potential for multiple porphyry targets



Total Magnetic
Intensity

PLUTO SHOWING

Vega Project
British Columbia

Porphyry Shear Zone
Contact



 Copper-Gold
Prospect

December 2016

Why Canasil? Key Factors for Creating Shareholder Value:

- La Esperanza high-grade Silver-Zinc-Lead vein System
2,452 metre drill program completed, further drilling planned***
- Sandra-Escobar disseminated near-surface Silver discovery
Option agreement with Orex Minerals Inc.
Orex completed expenditures for 55% earn-in to form 55:45 JV***
- Portfolio of advanced exploration projects in Mexico and BC
Potential for discovery on other drill ready projects***
- Multiple targets – multiple opportunities for discovery***
- BC Projects spin-off and distribution of Spin-co shares***
- Higher precious and base metal prices***
- Improving resource market environment***
- High upside potential, low downside risk***