

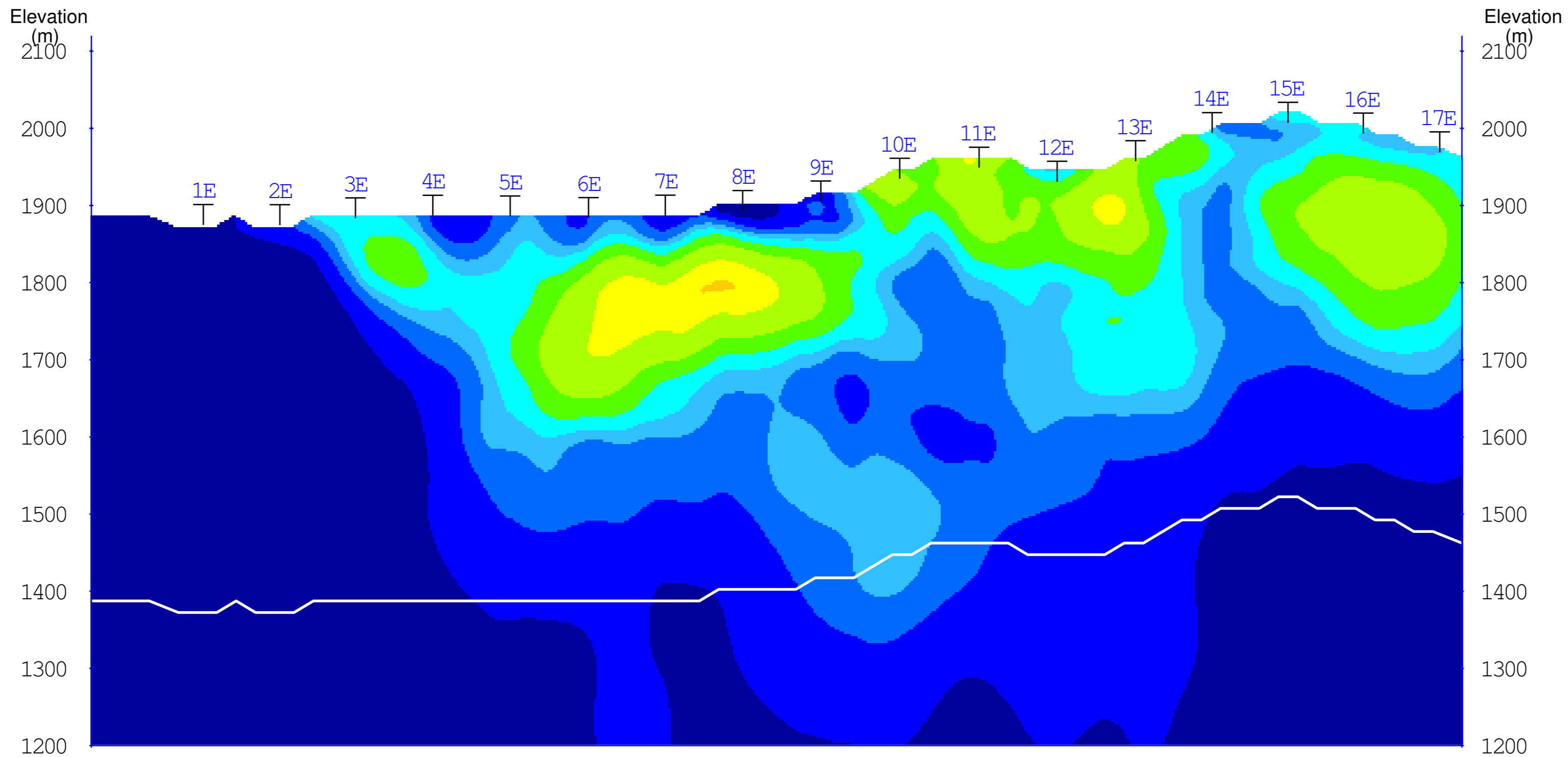
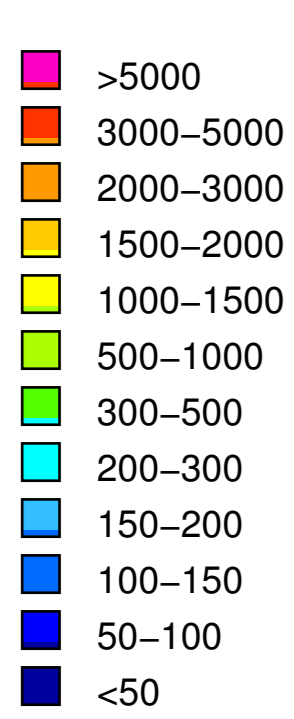
LEGEND
 White Line: Estimated Depth of Investigation
 T: Gridline Coordinate Projected to Section

SURVEY INFORMATION
 3D IP Array
 n=1-16
 a=100m
INSTRUMENTATION
 RECEIVER: SJ-24 Full-Waveform Digital IP Receiver
 TRANSMITTER: GDD Tx II
 Survey by: SJ Geophysics Ltd.
 3D Inversion by: S.J.V. Consultants Ltd.
 Processing Date: Nov., 2006

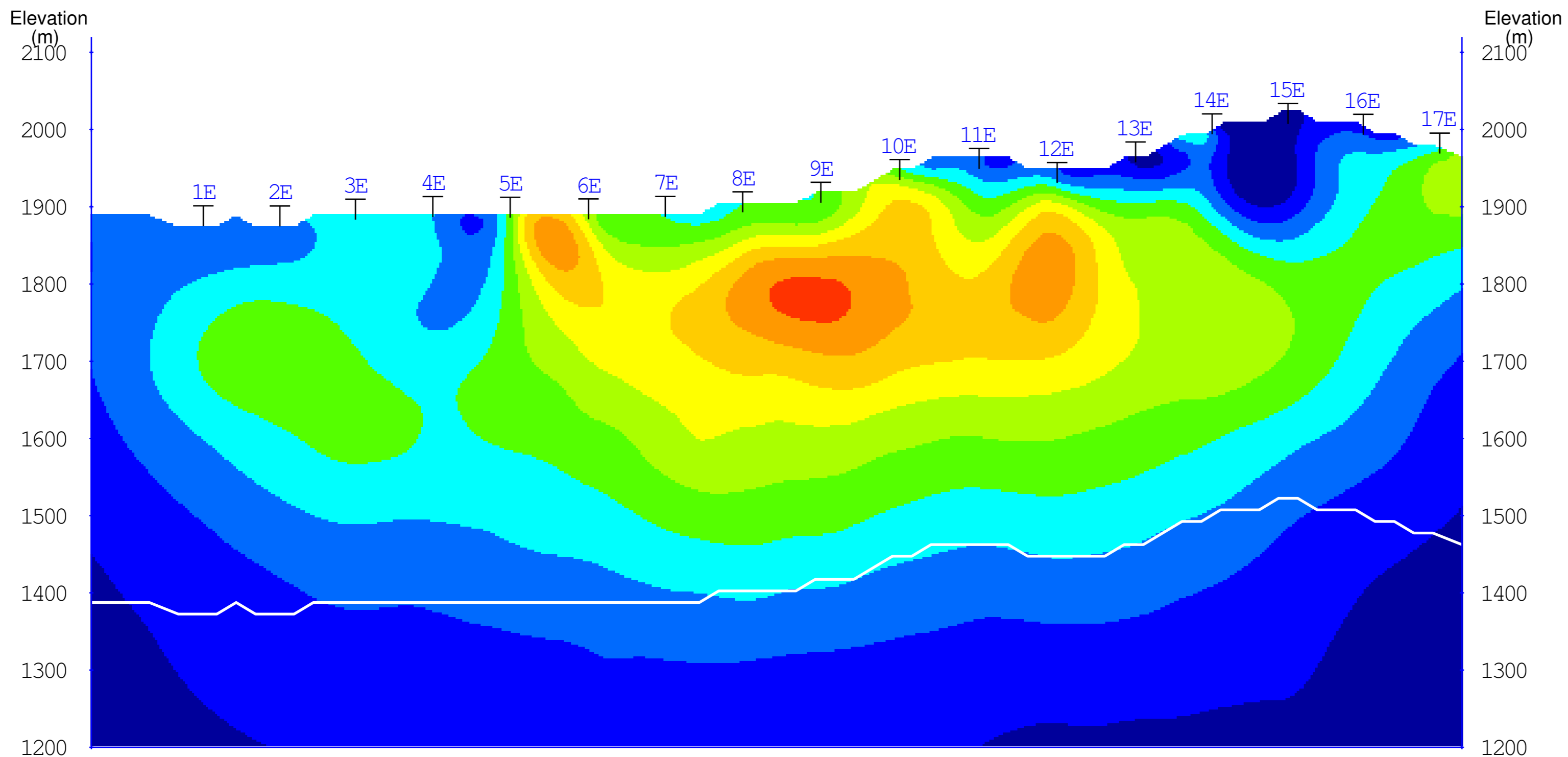
CANASIL RESOURCES INC.
Salamandra Project
 Durango State, Mexico

3D INVERSION MODEL
3D Cross Sections
 False Color Contour Map

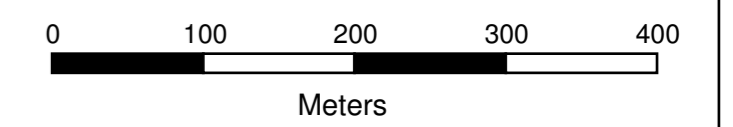
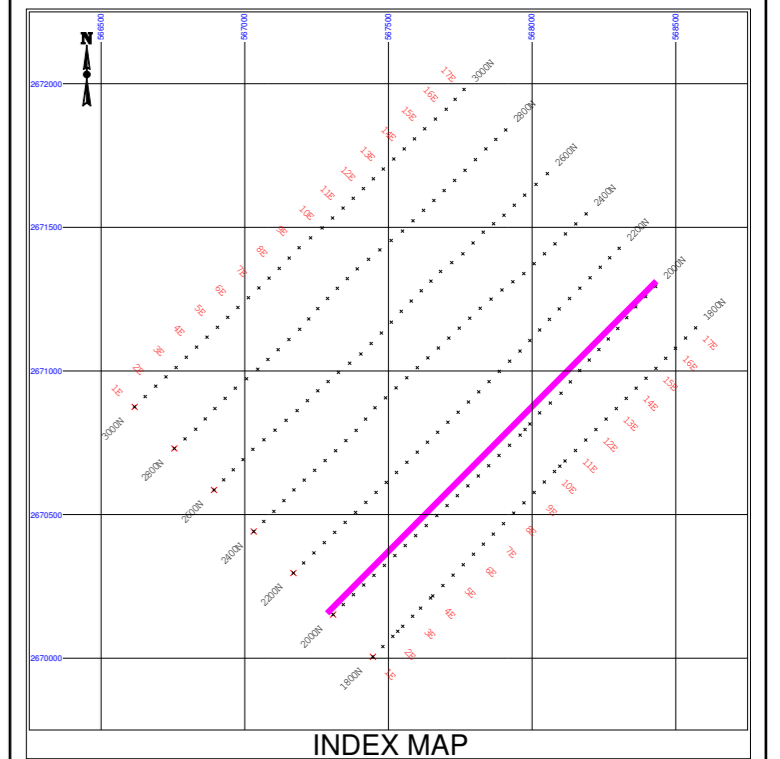
Line 1800N



Interpreted Resistivity (Ohm-m)



Interpreted Chargeability (ms)



LEGEND

White Line: Estimated Depth of Investigation
 T Gridline Coordinate Projected to Section

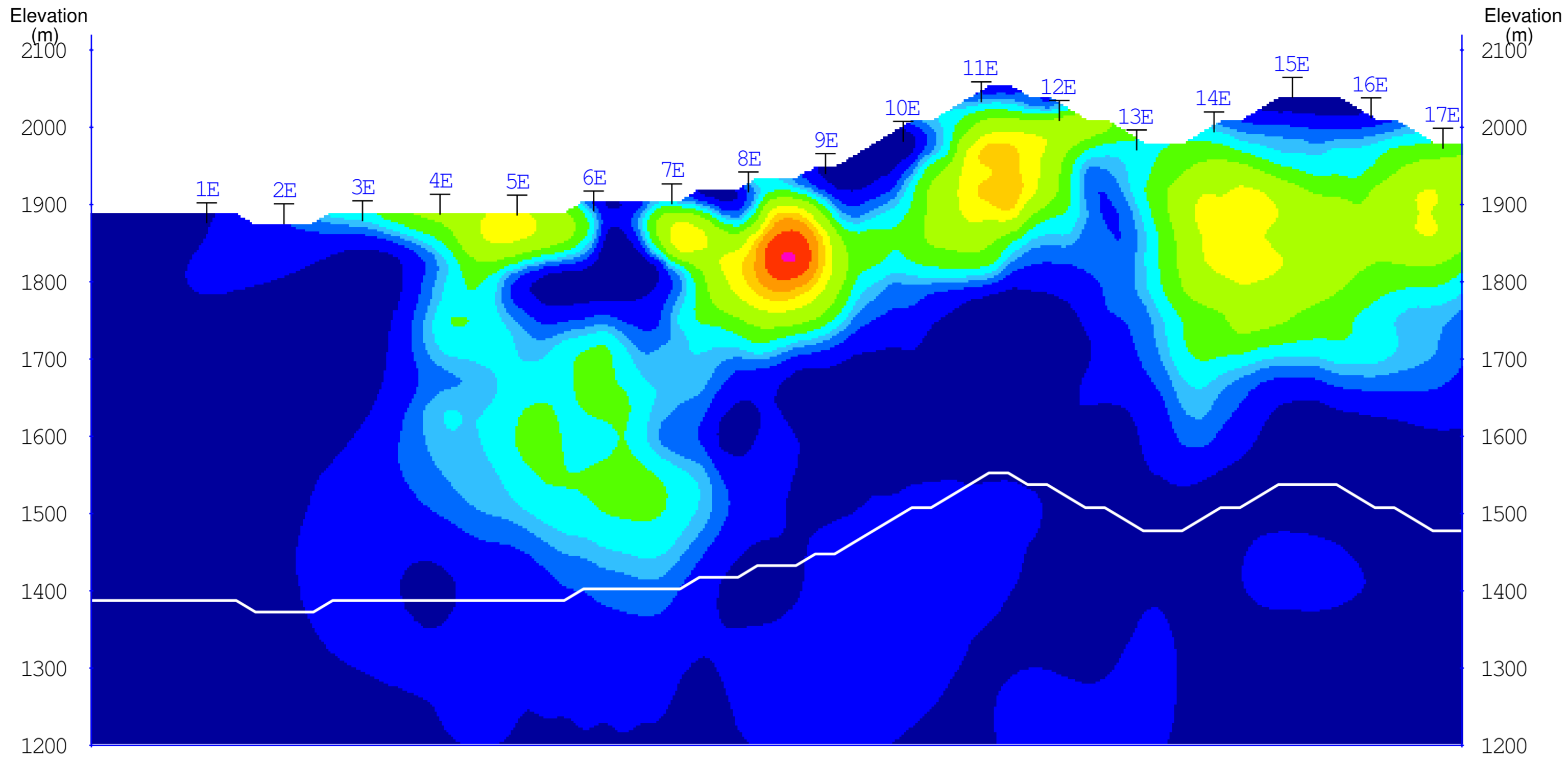
SURVEY INFORMATION

3D IP Array
 n=1-16
 a=100m
 INSTRUMENTATION
 RECEIVER: SJ-24 Full-Waveform Digital IP Receiver
 TRANSMITTER: GDD Tx II
 Survey by: SJ Geophysics Ltd.
 3D Inversion by: S.J.V. Consultants Ltd.
 Processing Date: Nov., 2006

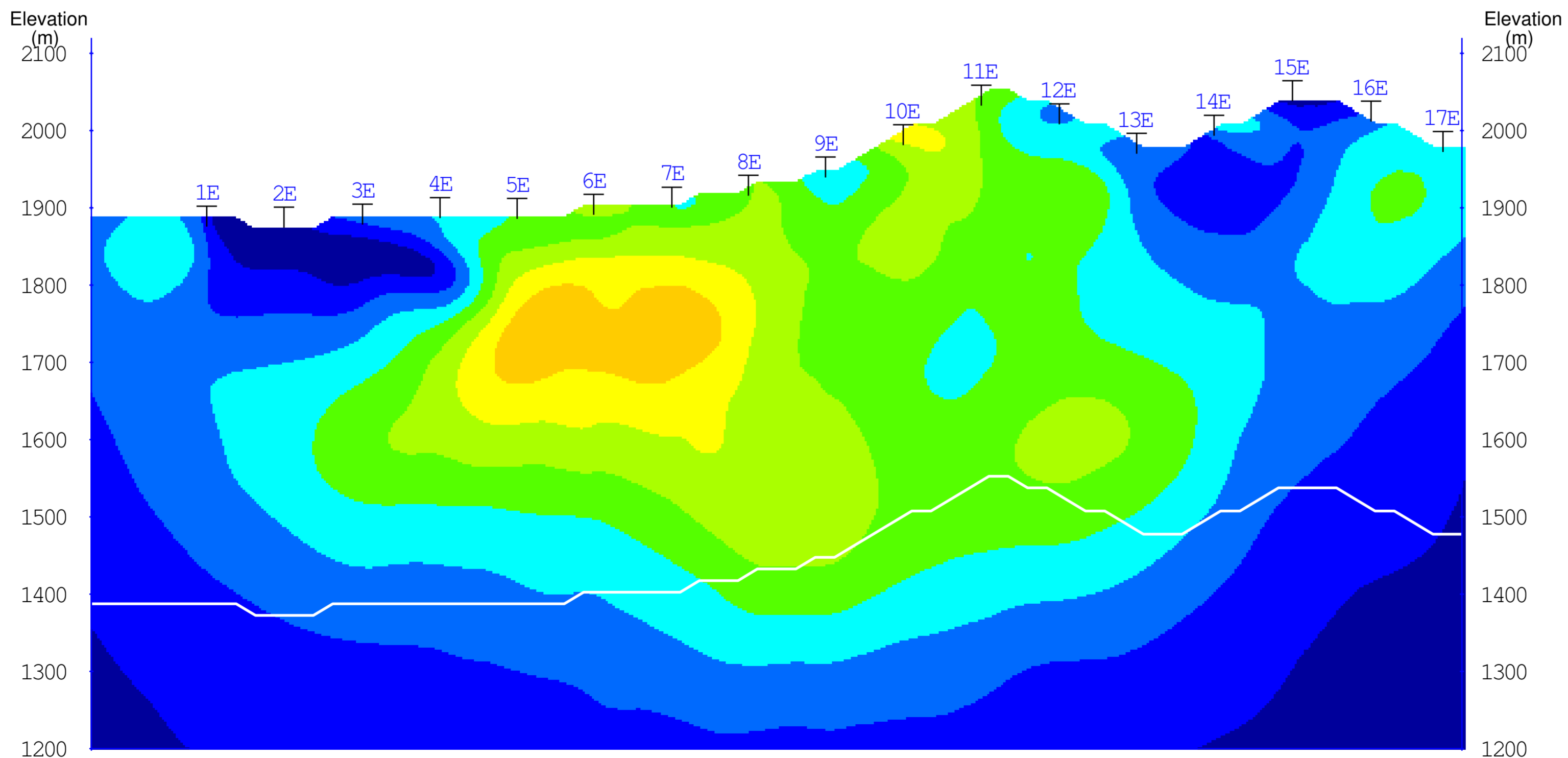
CANASIL RESOURCES INC.
Salamandra Project
 Durango State, Mexico

3D INVERSION MODEL
3D Cross Sections
 False Color Contour Map

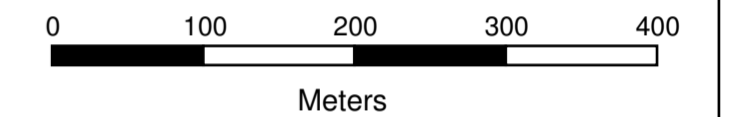
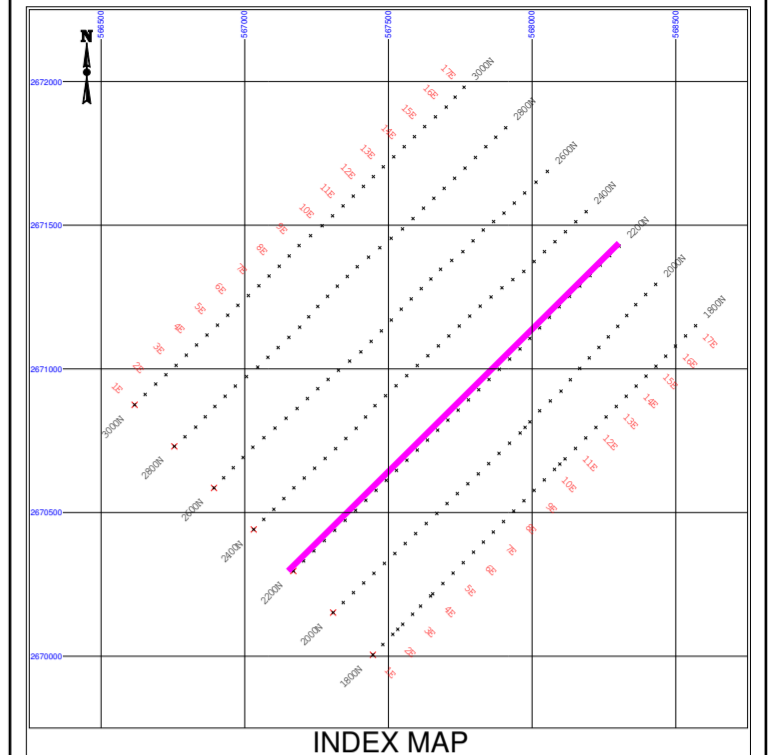
Line 2000N



Interpreted Resistivity (Ohm-m)



Interpreted Chargeability (ms)



LEGEND

White Line: Estimated Depth of Investigation
 T Gridline Coordinate Projected to Section

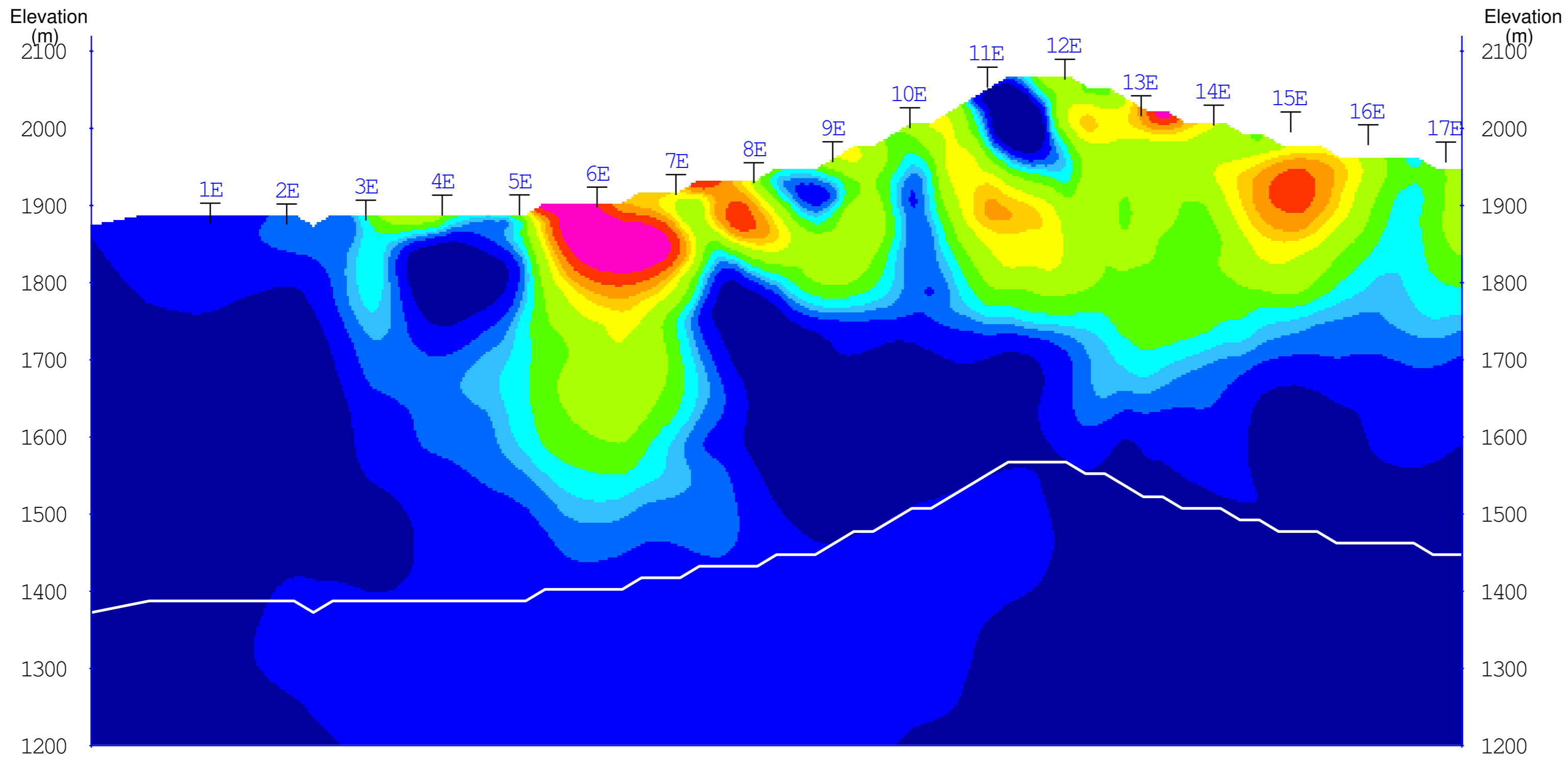
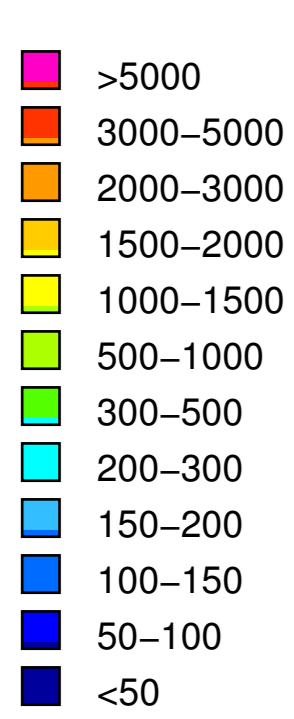
SURVEY INFORMATION

3D IP Array
 n=1-16
 a=100m
 INSTRUMENTATION
 RECEIVER: SJ-24 Full-Waveform Digital IP Receiver
 TRANSMITTER: GDD Tx II
 Survey by: SJ Geophysics Ltd.
 3D Inversion by: S.J.V. Consultants Ltd.
 Processing Date: Nov., 2006

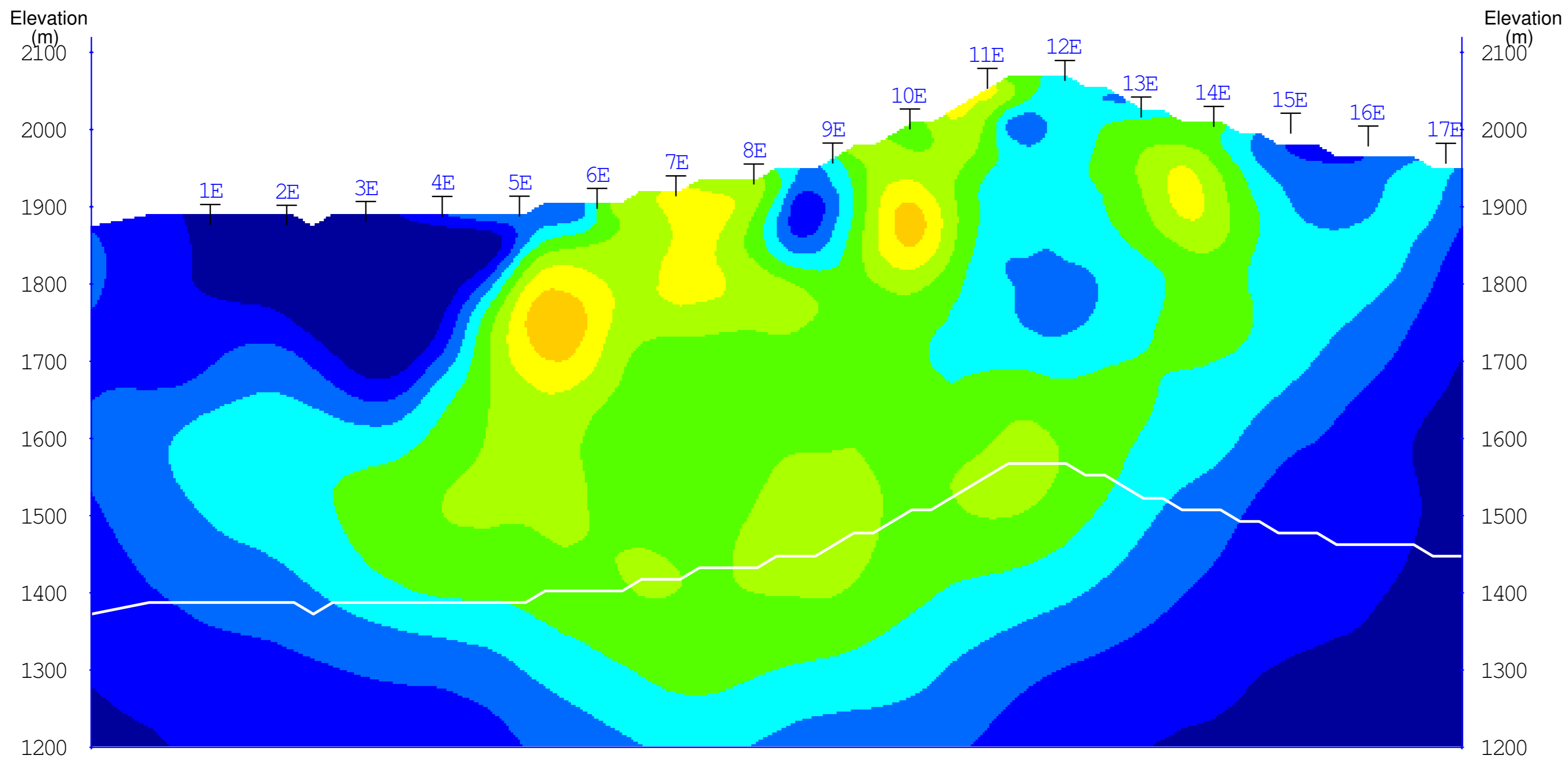
CANASIL RESOURCES INC.
Salamandra Project
 Durango State, Mexico

3D INVERSION MODEL
3D Cross Sections
 False Color Contour Map

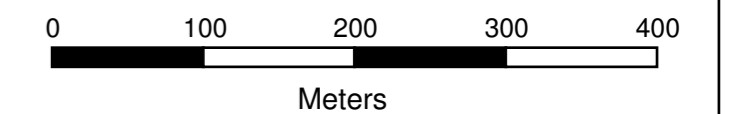
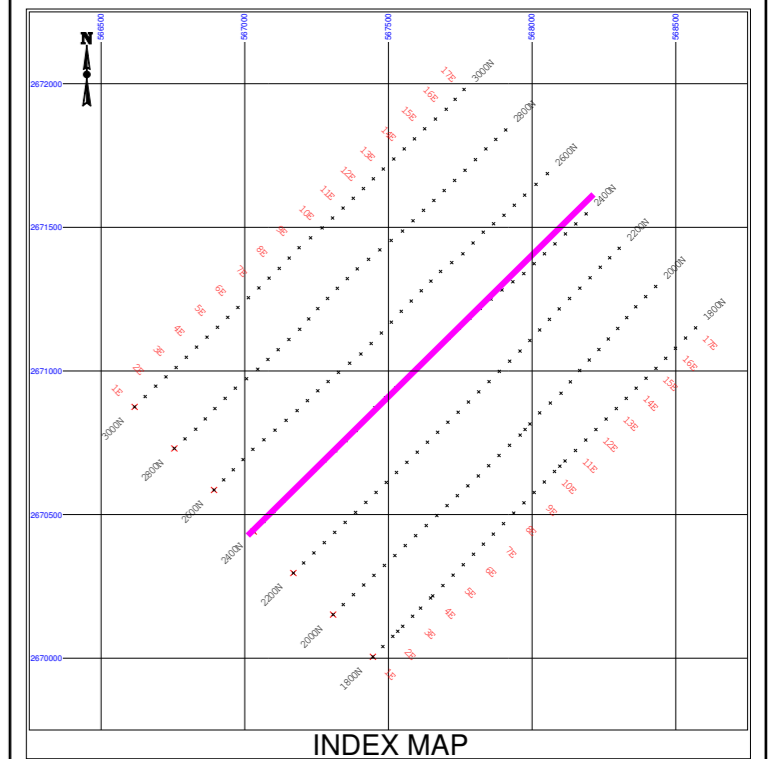
Line 2200N



Interpreted Resistivity (Ohm-m)



Interpreted Chargeability (ms)



LEGEND

White Line: Estimated Depth of Investigation
 T: Gridline Coordinate Projected to Section

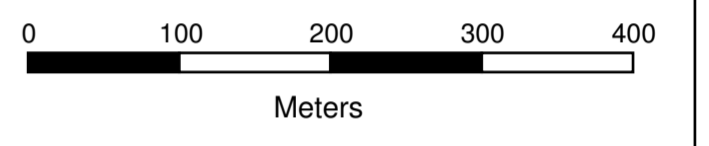
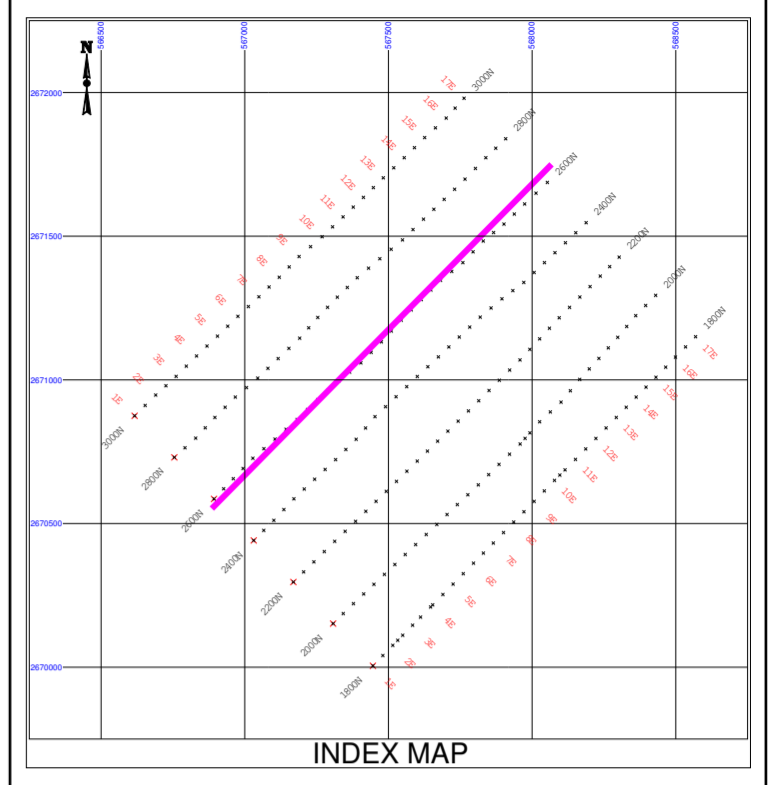
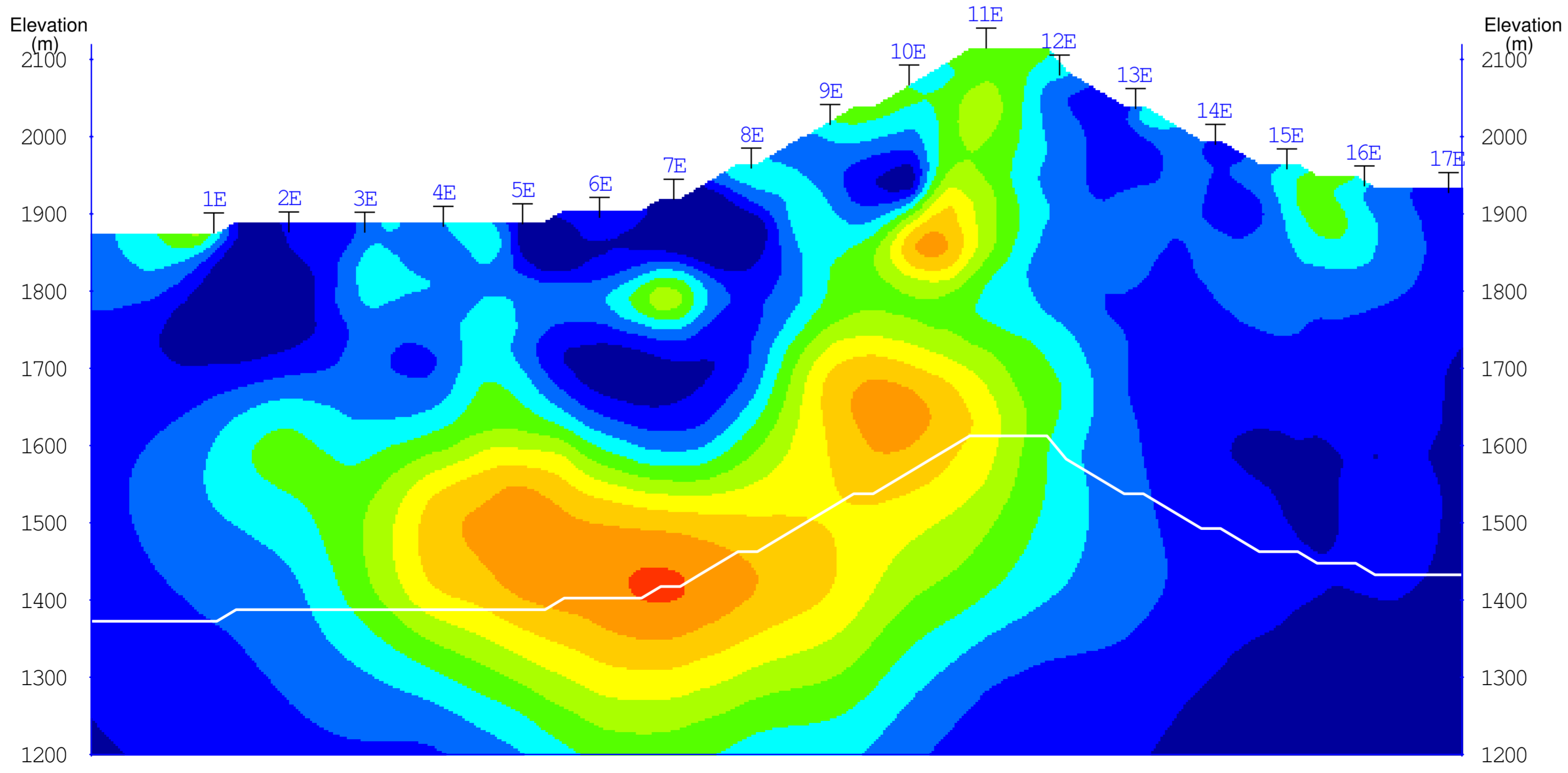
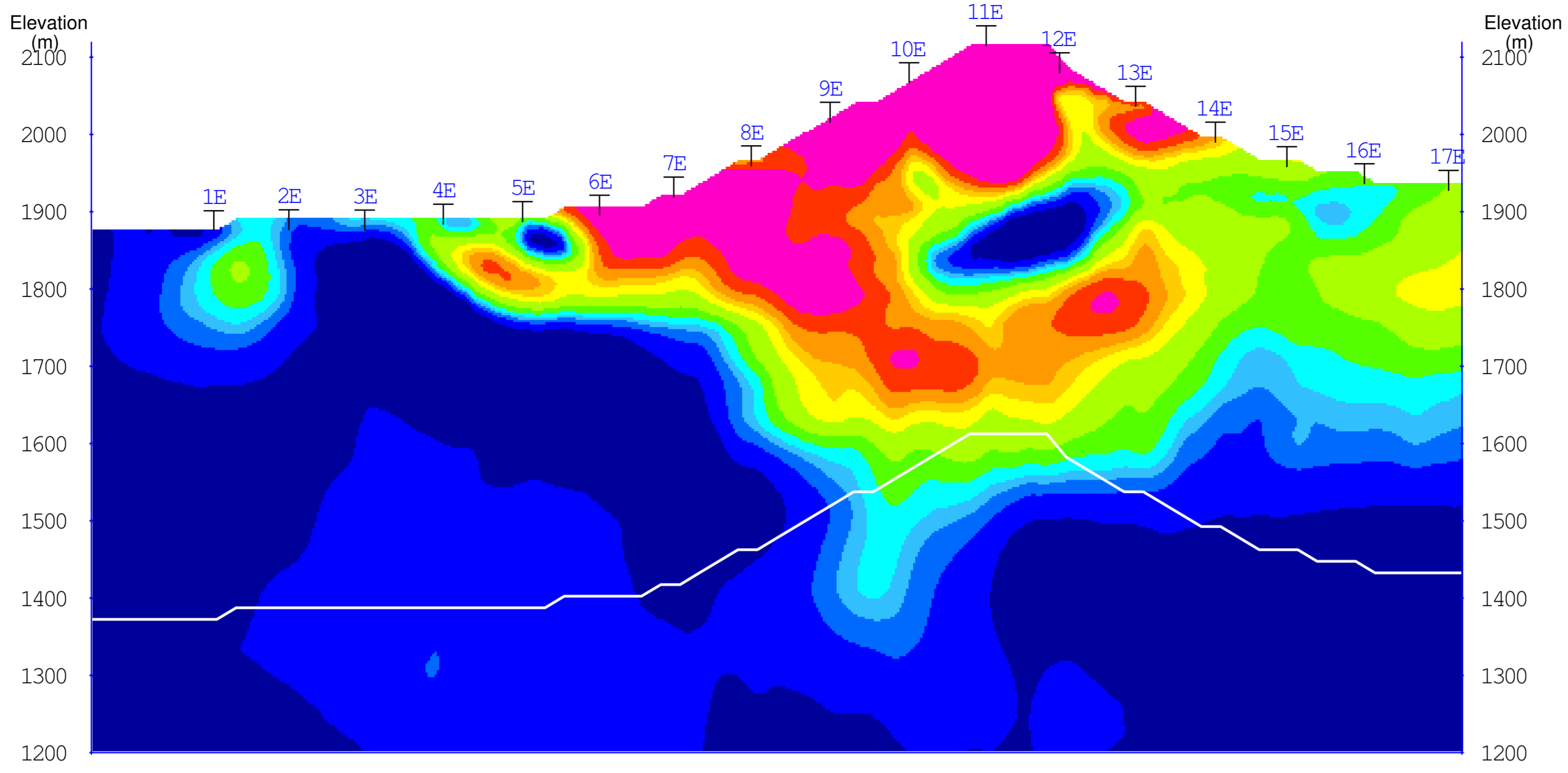
SURVEY INFORMATION

3D IP Array
 n=1-16
 a=100m
 INSTRUMENTATION
 RECEIVER: SJ-24 Full-Waveform Digital IP Receiver
 TRANSMITTER: GDD Tx II
 Survey by: SJ Geophysics Ltd.
 3D Inversion by: S.J.V. Consultants Ltd.
 Processing Date: Nov., 2006

CANASIL RESOURCES INC.
Salamandra Project
 Durango State, Mexico

3D INVERSION MODEL
3D Cross Sections
 False Color Contour Map

Line 2400N

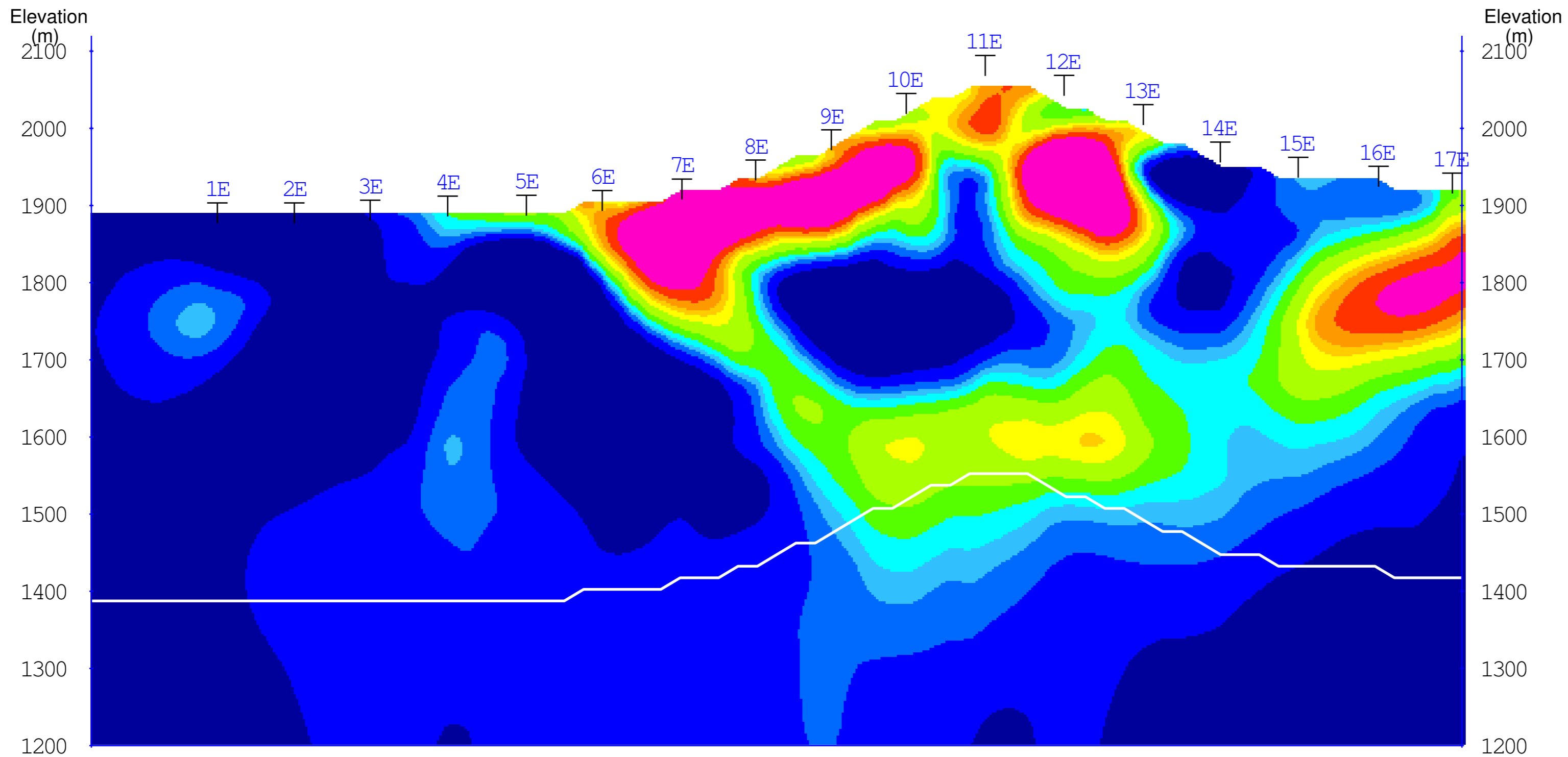


LEGEND
 White Line: Estimated Depth of Investigation
 T: Gridline Coordinate Projected to Section

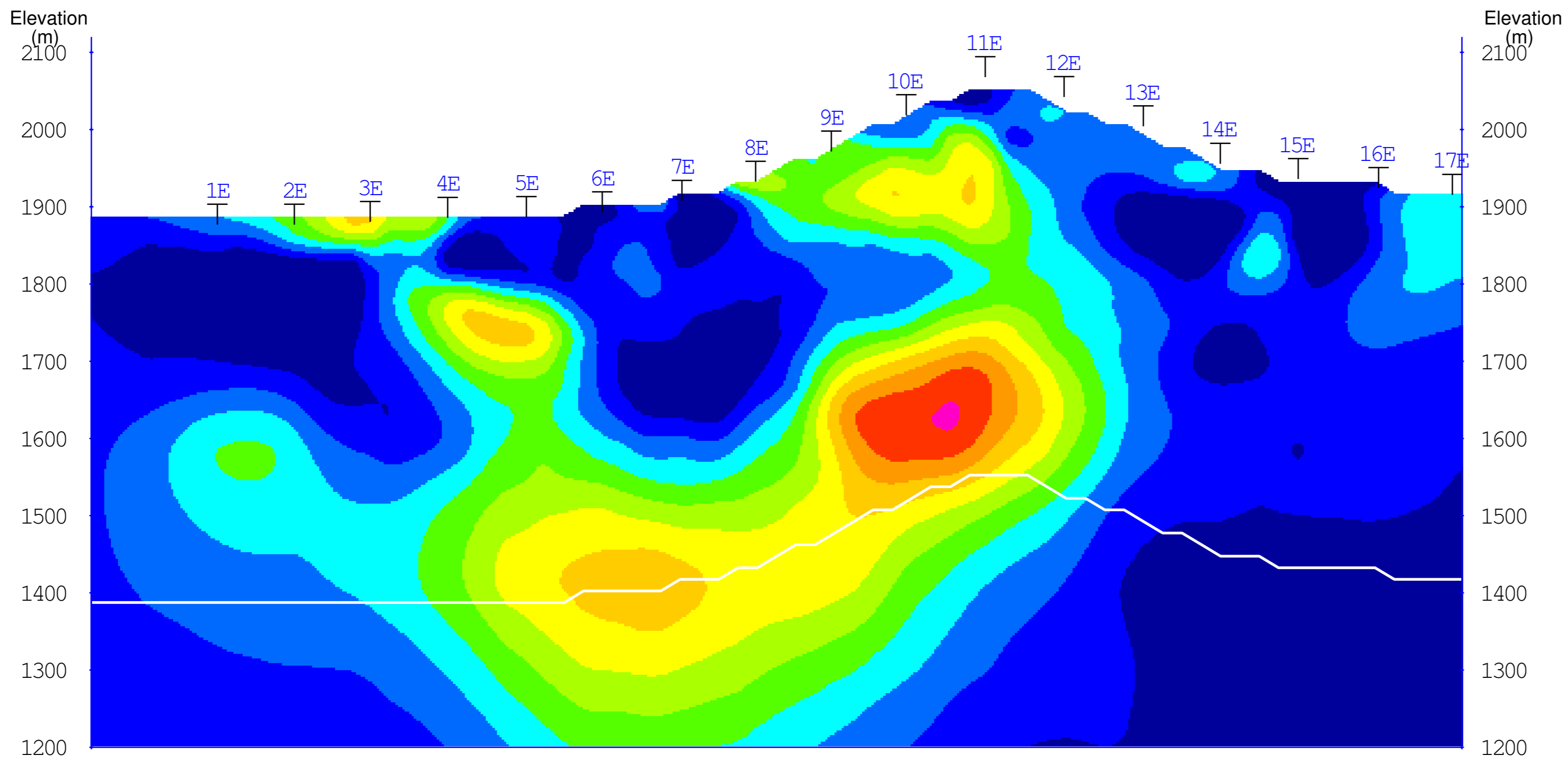
SURVEY INFORMATION
 3D IP Array
 n=1-16
 a=100m
 INSTRUMENTATION
 RECEIVER: SJ-24 Full-Waveform Digital IP Receiver
 TRANSMITTER: GDD Tx II
 Survey by: SJ Geophysics Ltd.
 3D Inversion by: S.J.V. Consultants Ltd.
 Processing Date: Nov., 2006

CANASIL RESOURCES INC.
 Salamandra Project
 Durango State, Mexico

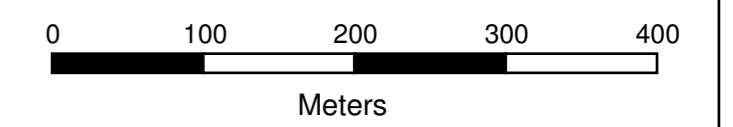
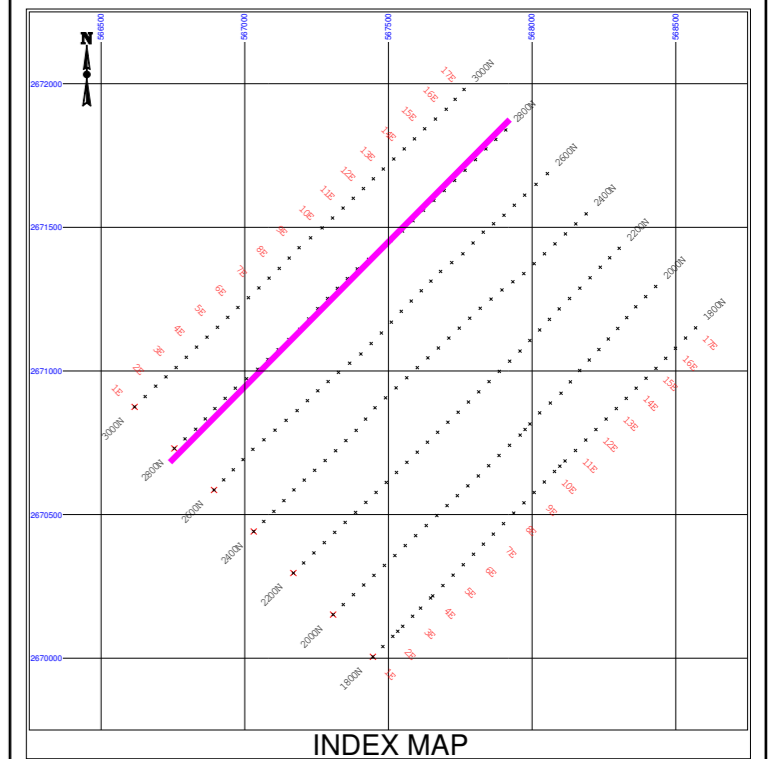
3D INVERSION MODEL
 3D Cross Sections
 False Color Contour Map
 Line 2600N



Interpreted Resistivity (Ohm-m)



Interpreted Chargeability (ms)



LEGEND

White Line: Estimated Depth of Investigation
 T Gridline Coordinate Projected to Section

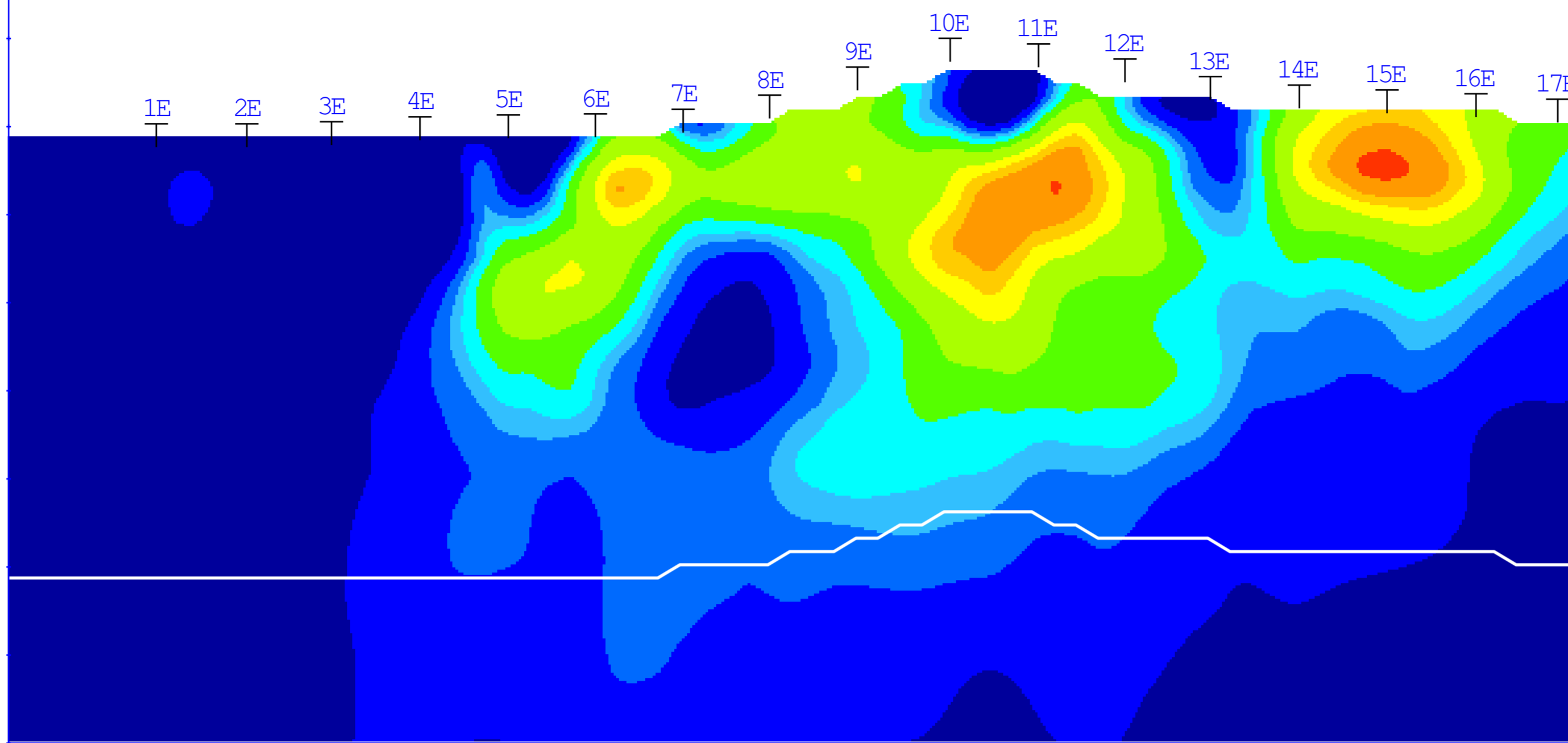
SURVEY INFORMATION

3D IP Array
 n=1-16
 a=100m
 INSTRUMENTATION
 RECEIVER: SJ-24 Full-Waveform Digital IP Receiver
 TRANSMITTER: GDD Tx II
 Survey by: SJ Geophysics Ltd.
 3D Inversion by: S.J.V. Consultants Ltd.
 Processing Date: Nov., 2006

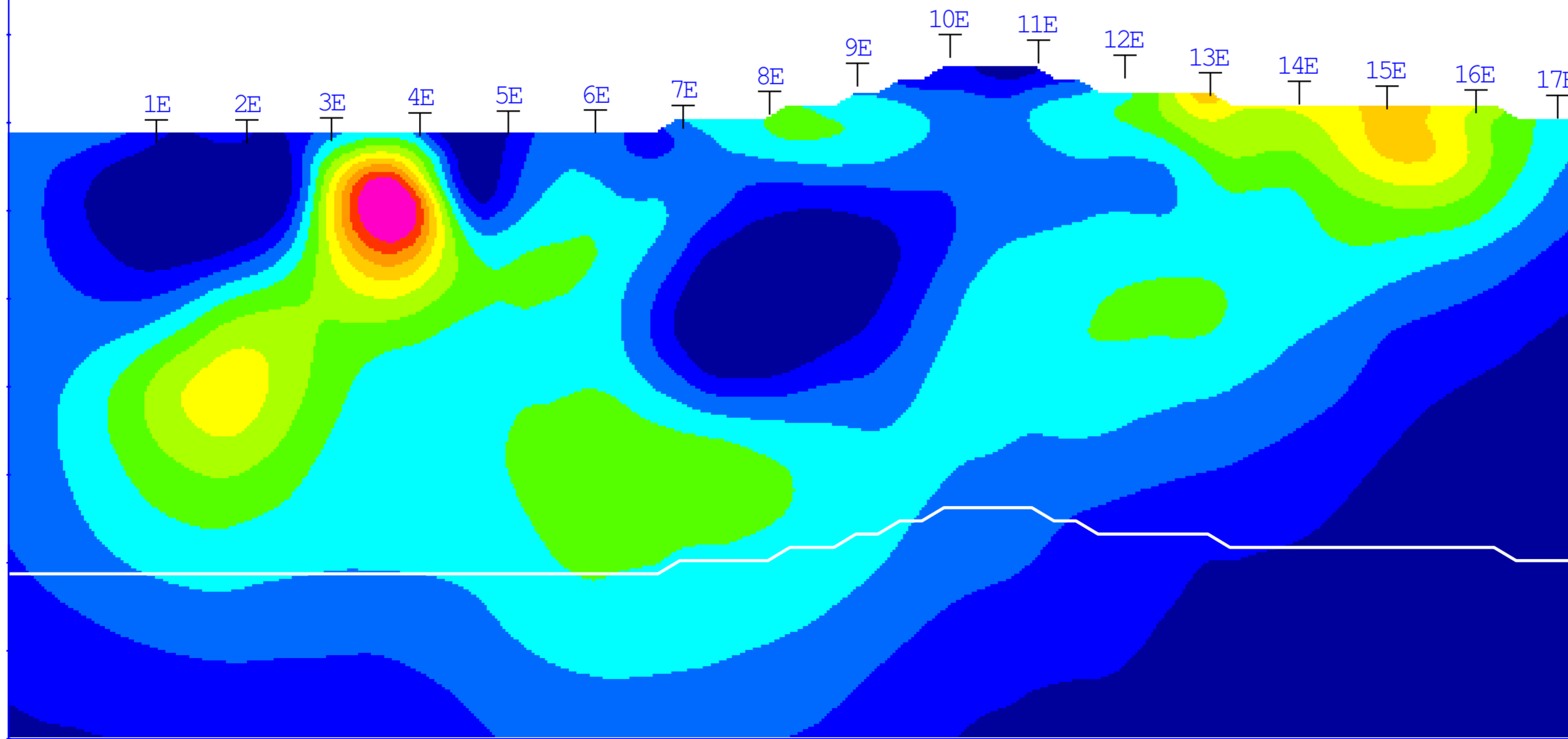
CANASIL RESOURCES INC.
 Salamandra Project
 Durango State, Mexico

3D INVERSION MODEL
 3D Cross Sections
 False Color Contour Map

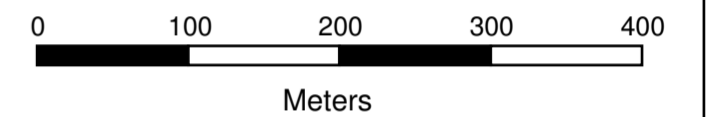
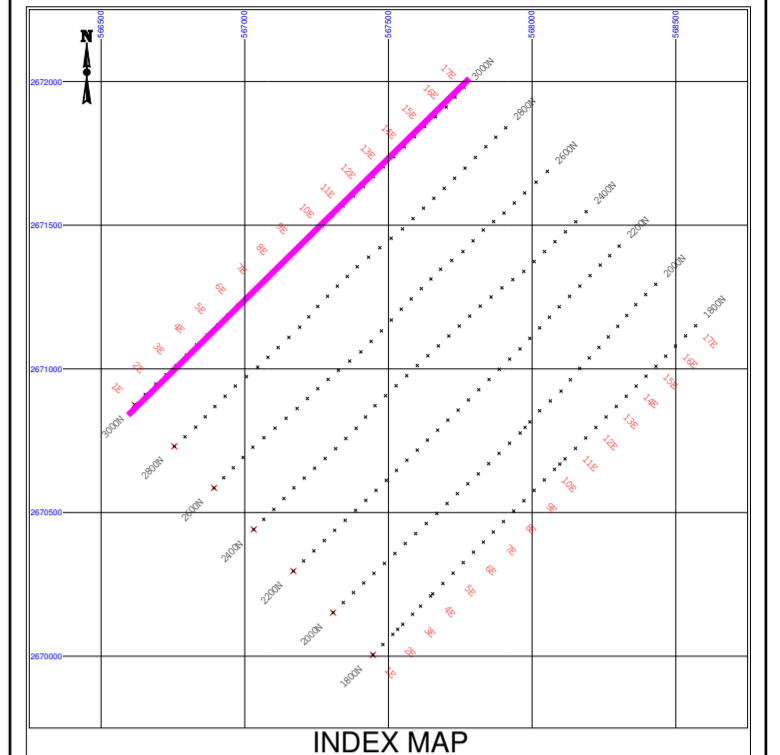
Line 2800N



Interpreted Resistivity (Ohm-m)



Interpreted Chargeability (ms)



LEGEND

White Line: Estimated Depth of Investigation
 T Gridline Coordinate Projected to Section

SURVEY INFORMATION

3D IP Array
 n=1-16
 a=100m
 INSTRUMENTATION
 RECEIVER: SJ-24 Full-Waveform Digital IP Receiver
 TRANSMITTER: GDD Tx II
 Survey by: SJ Geophysics Ltd.
 3D Inversion by: S.J.V. Consultants Ltd.
 Processing Date: Nov., 2006

CANASIL RESOURCES INC.
Salamandra Project
 Durango State, Mexico

3D INVERSION MODEL
3D Cross Sections
 False Color Contour Map

Line 3000N